



CITY OF DOVER, NEW HAMPSHIRE

FIFTH & GROVE STREETS RECONSTRUCTION PROJECT



Woodard
& Curran

July 10
2023

PRESENTED BY

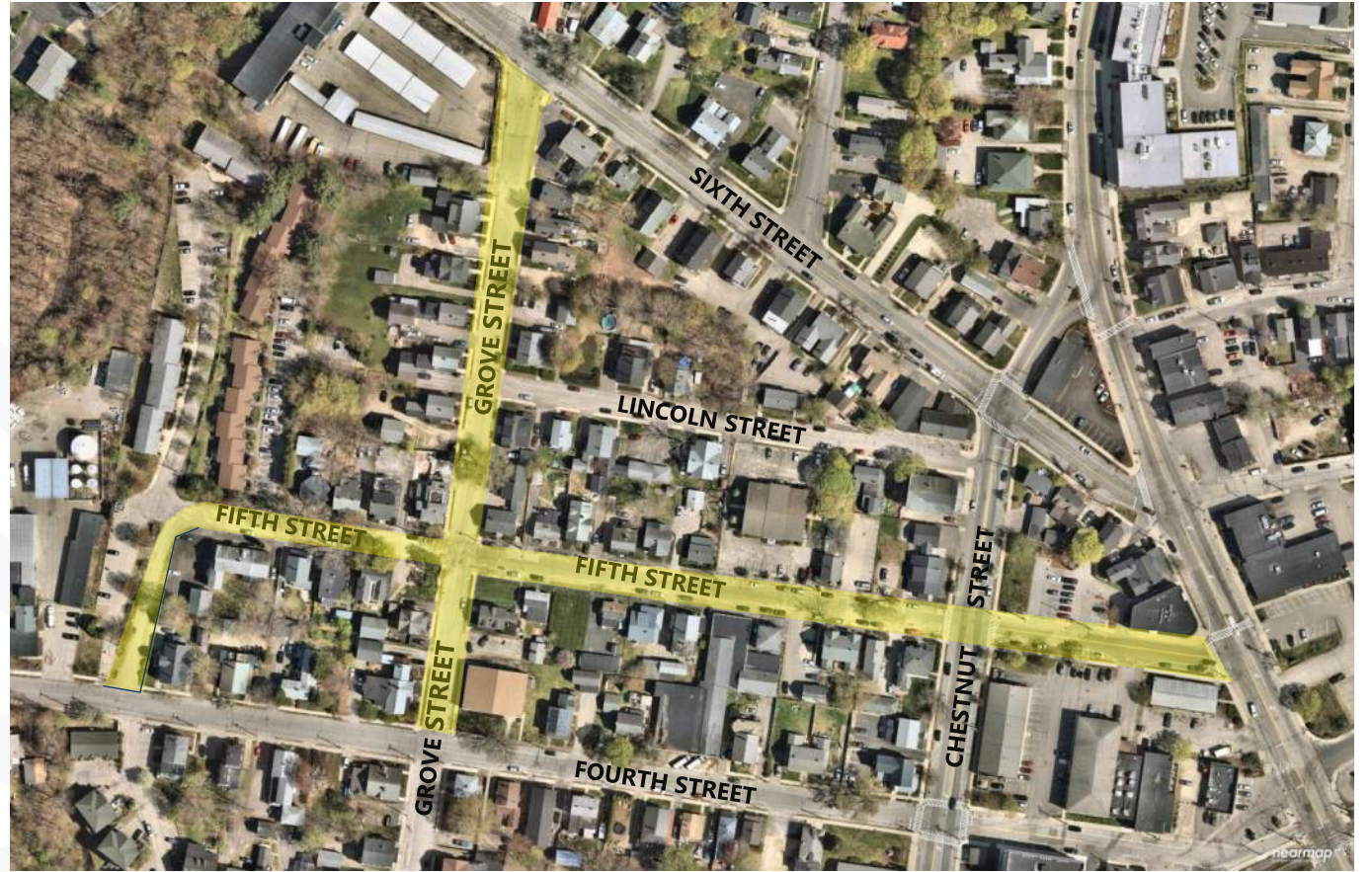
Scott Salvucci, PE

Kendra Dow, PE

Ross Tsantoulis, PE

AGENDA

- Project Overview
- Travel & Parking Updates
- Streetscape Improvements



PROJECT OVERVIEW

→ Utility Improvements

- ▶ Watermain Replacement
 - » Grove Street, and Fifth from Fourth to Grove
- ▶ Storm Drainage Replacement
 - » Storm Drain Laterals
 - » Water Quality Treatment
- ▶ Sanitary Sewer
 - » Laterals Replaced by City
- ▶ Private Gas Main Replacement



PROJECT OVERVIEW

→ Travel Lane & Parking Updates

- ▶ Travel Direction Changes
- ▶ Increased Street Parking

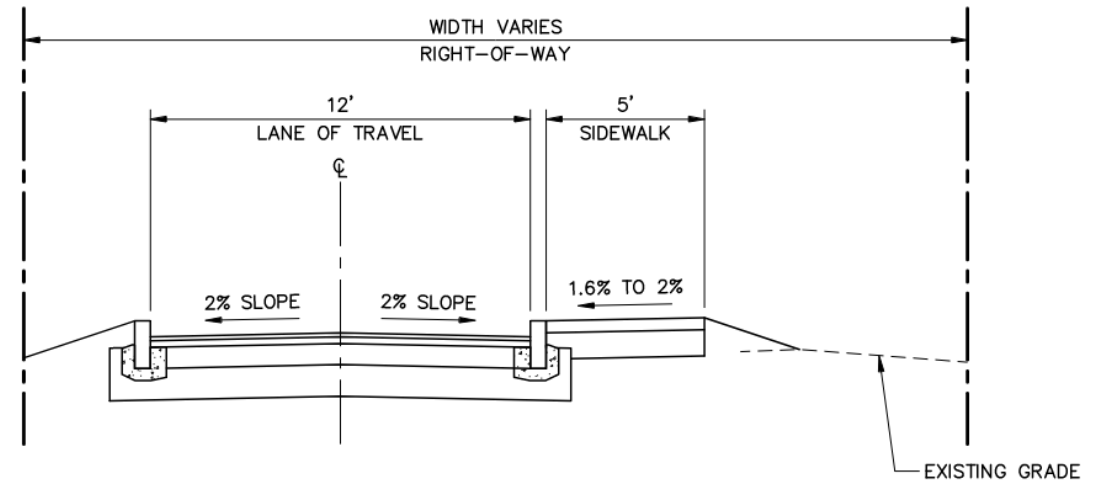
→ Streetscape Improvements

- ▶ Reconstruction of Roads, Curbs, Sidewalks, Driveway Aprons
 - » Temporary Construction Easements
- ▶ Streetlight and Utility Pole Relocations
- ▶ ADA Compliance
- ▶ RRFB at Chestnut & Fifth
- ▶ Strategic Street Tree Replacements



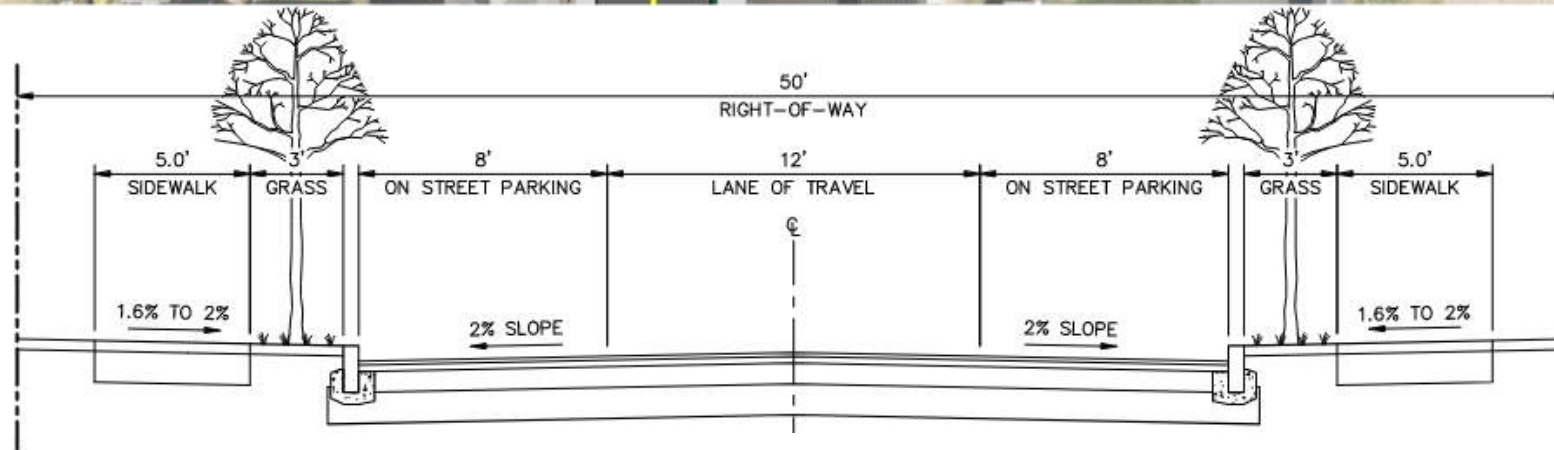
TRAVEL LANES & PARKING

- FIFTH STREET (FOURTH ST TO TAMMANY PARK)



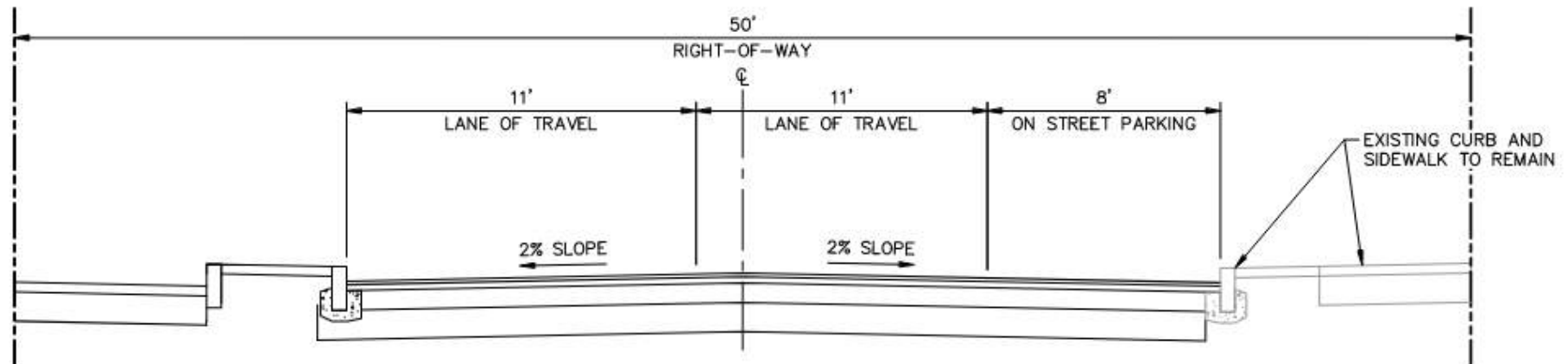
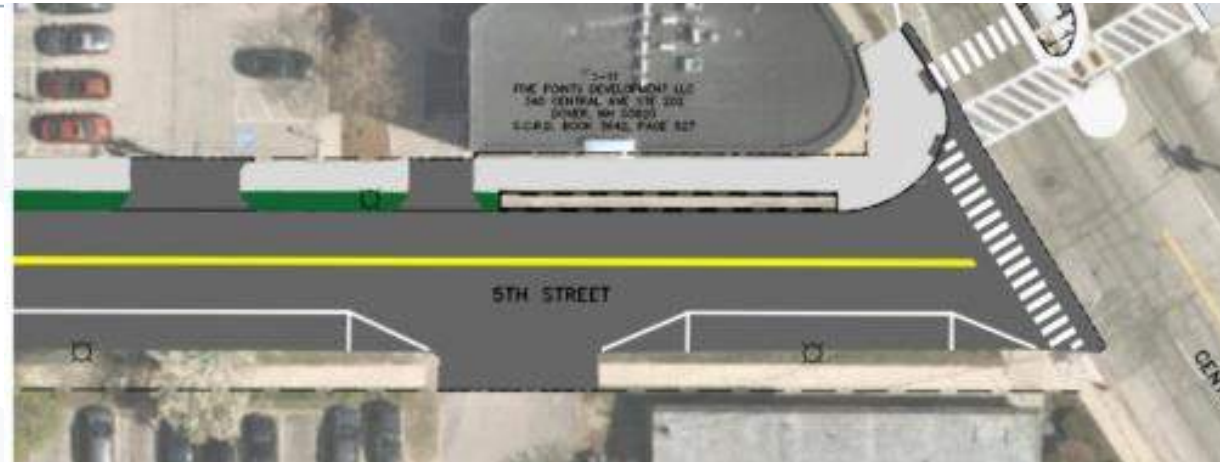
FIFTH STREET (4TH STREET TO TAMMANY PARK):
ONE WAY, 12' LANE OF TRAVEL, SIDEWALK ONE SIDE

TRAVEL LANES & PARKING - FIFTH STREET (TAMMANY PARK TO CHESTNUT ST)



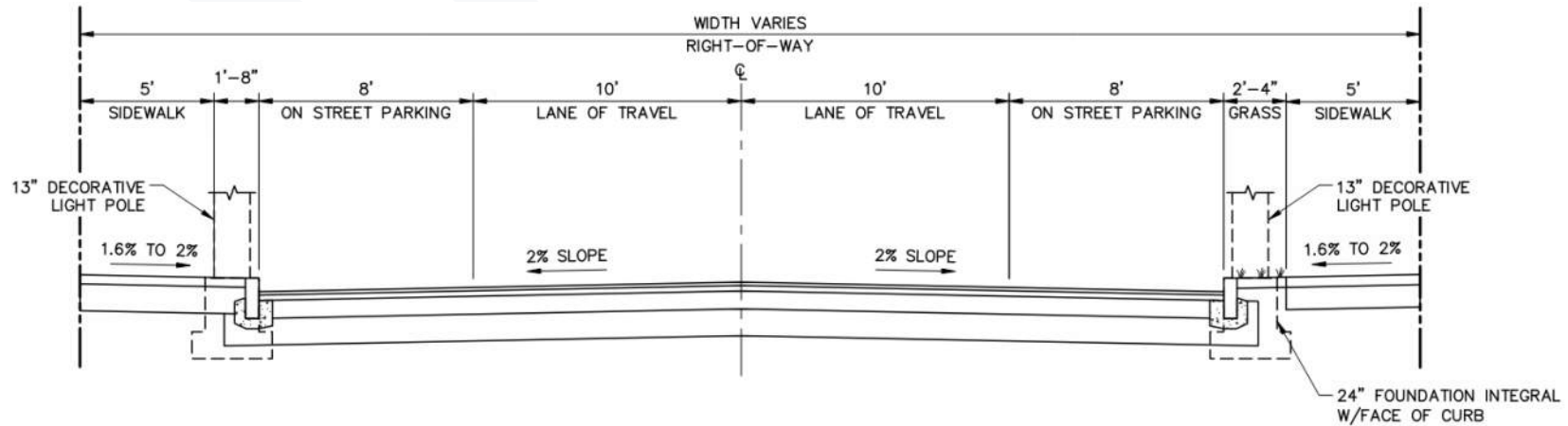
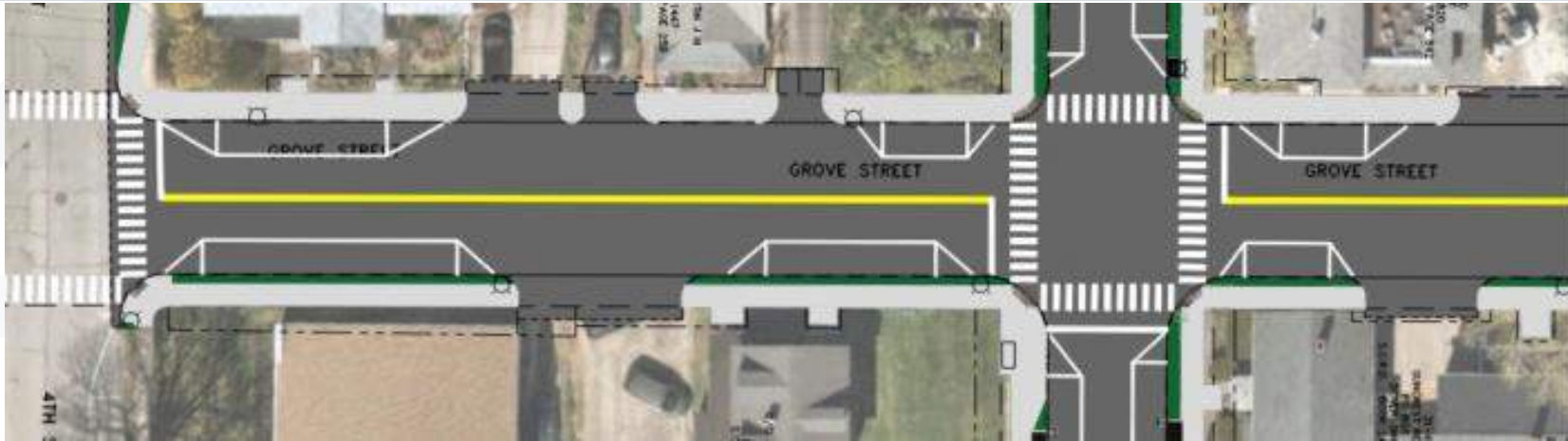
**FIFTH STREET (TAMMANY PARK TO CHESTNUT STREET):
ONE WAY, 12' LANE OF TRAVEL, PARKING AND SIDEWALK BOTH SIDES**

TRAVEL LANES & PARKING - FIFTH STREET (CHESTNUT ST TO CENTRAL AVE)



FIFTH STREET (CHESTNUT STREET TO CENTRAL AVENUE):
10' LANES OF TRAVEL, PARKING ONE SIDE, EXISTING SIDEWALKS TO REMAIN

TRAVEL LANES & PARKING - GROVE STREET



**GROVE STREET:
10' LANES OF TRAVEL, SIDEWALK AND PARKING BOTH SIDES**

SIDEWALK IMPROVEMENTS

- Concrete Sidewalks
 - 5-ft Minimum Width
- ADA Compliance
 - Tip-Down Ramps
 - Driveway Cross-Slopes
- Drainage Inlet Filters
 - “Tree Boxes”
- “No-Mow” Clover/ Fescue Seed Mix



STREETLIGHT ENHANCEMENTS



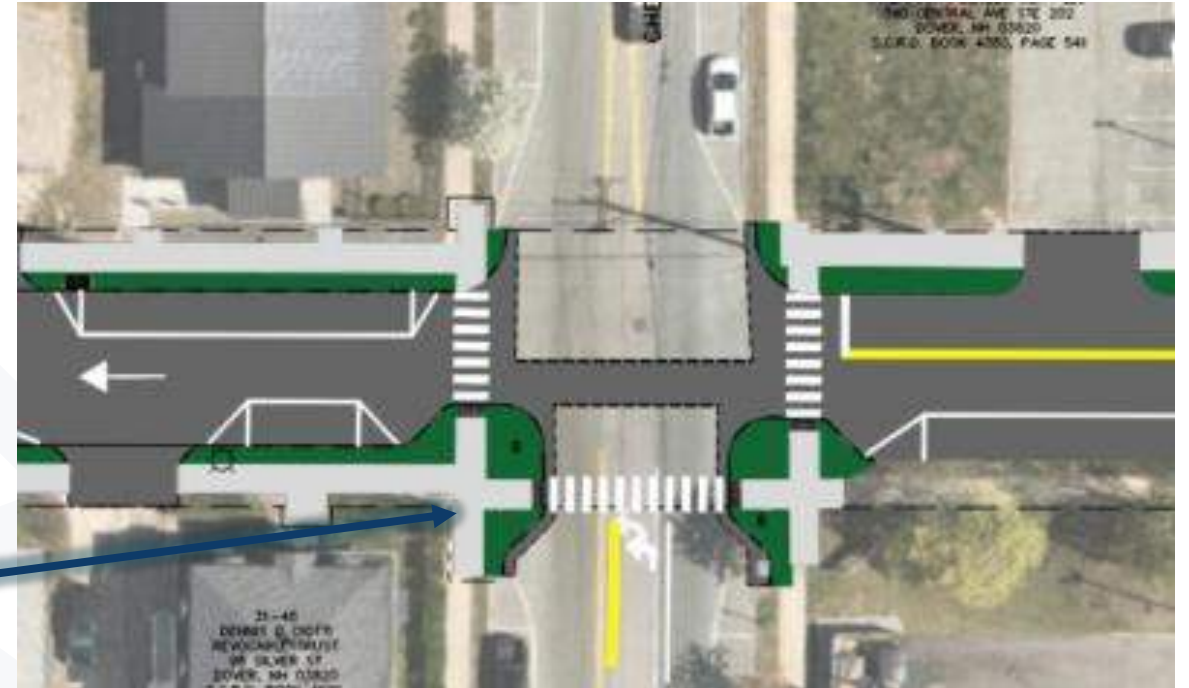
- ▶ New Poles and Fixtures Mid-block

- ▶ Cobra Head Lights at Intersections on Utility Poles

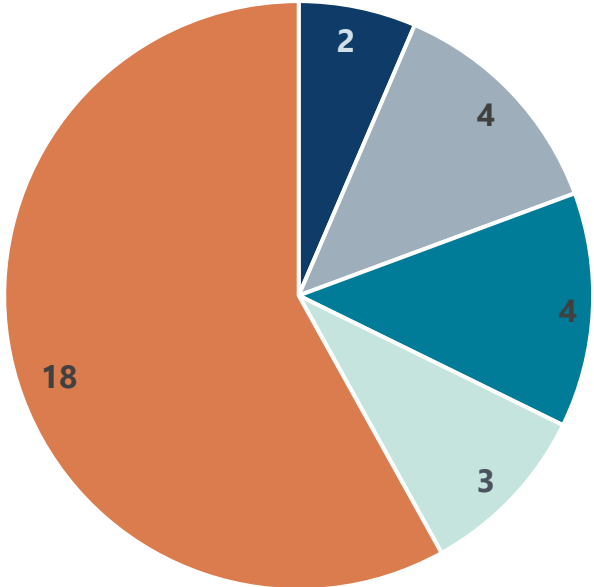


PEDESTRIAN ENHANCEMENTS

- ADA Compliance
- RRFB at Chestnut & Fifth
 - ▶ Rectangular Rapid Flashing Beacon
 - ▶ Solar Powered
 - ▶ Curb Bump-outs



TREE IMPACTS



- Dead
- Poor
- Fair
- Fair/Good
- Good

REPLACEMENT TREES



▶ Sweet Gum



▶ Red Maple



▶ Northern Red Oak



Thank You!

