

MAP 22 LOT 42

SCALE: 1 INCH = 50 FT.

EXISTING CONDITIONS PLAN
 FOR
HORSLEY WITTEN GROUP
 OF
TAX MAP 22 LOT 1
 31 RIVER STREET
 DOVER, NEW HAMPSHIRE

NO.	DATE	DESCRIPTION	BY

DRAWN BY:	M.T.L.	DATE:	AUGUST 2017
CHECKED BY:	J.F.K.	DRAWING NO.:	4966A
JOB NO.:	4966	SHEET	2 OF 4

DOUCET SURVEY
 Serving Your Professional Surveying & Mapping Needs
 102 Kent Place, Newmarket, NH 03857 (603) 659-6560
 2 Commerce Drive (Suite 202) Bedford, NH 03110 (603) 614-4060
 10 Storer Street (Riverview Suite) Kennebunk, ME (207) 502-7005
<http://www.doucetsurvey.com>

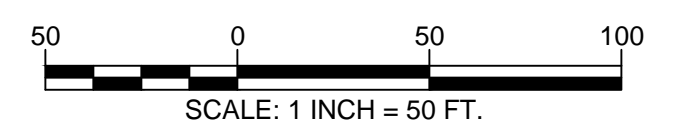
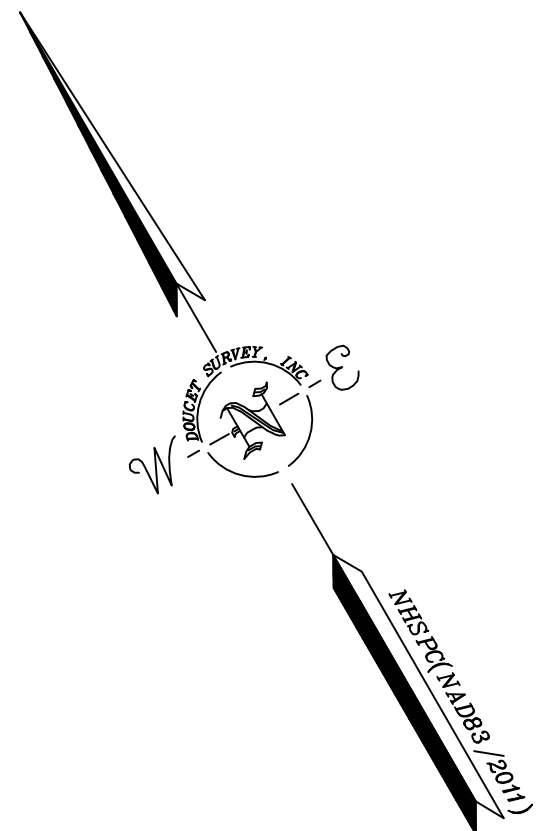
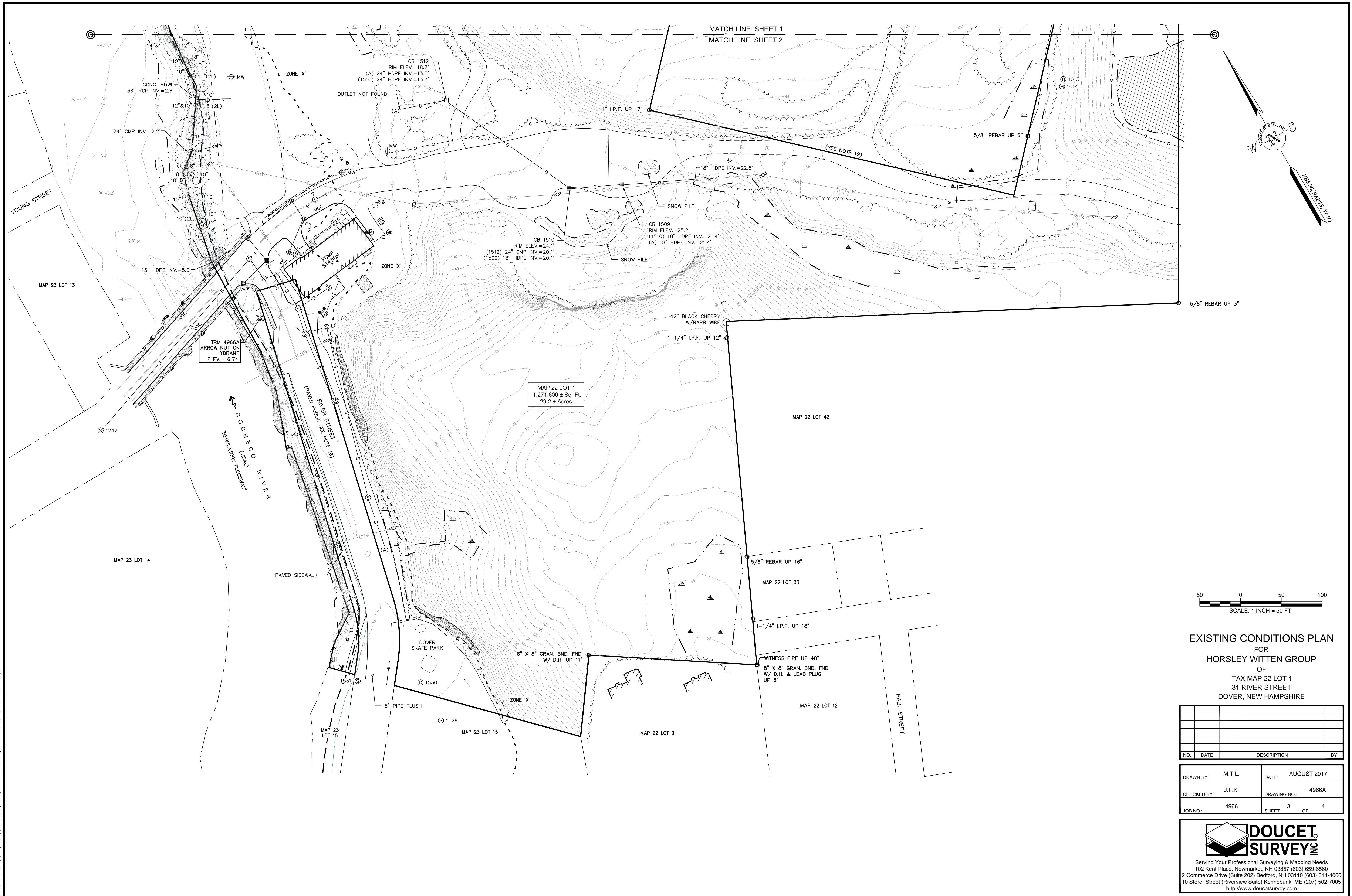
MAP 22 LOT 1
 1,271,600 ± Sq. Ft.
 29.2 ± Acres

TBM 4966B
 MAG. NAIL UP 6"
 IN POLE PSNH133/12XA
 ELEV.=11.82'

SMH 1501
 RIM ELEV.=12.8'
 (1506) 24" RCP INV.=6.3'
 (A) 24" RCP INV.=6.4'

MATCH LINE SHEET 1
 MATCH LINE SHEET 2

FILE NAME: C:\Users\matt\Documents\Projects\2017\2017-11-14\2017-11-14.dwg
 PLOTTED: Thursday, September 14, 2017 11:44 AM
 PLOTTER: HP DesignJet 2450



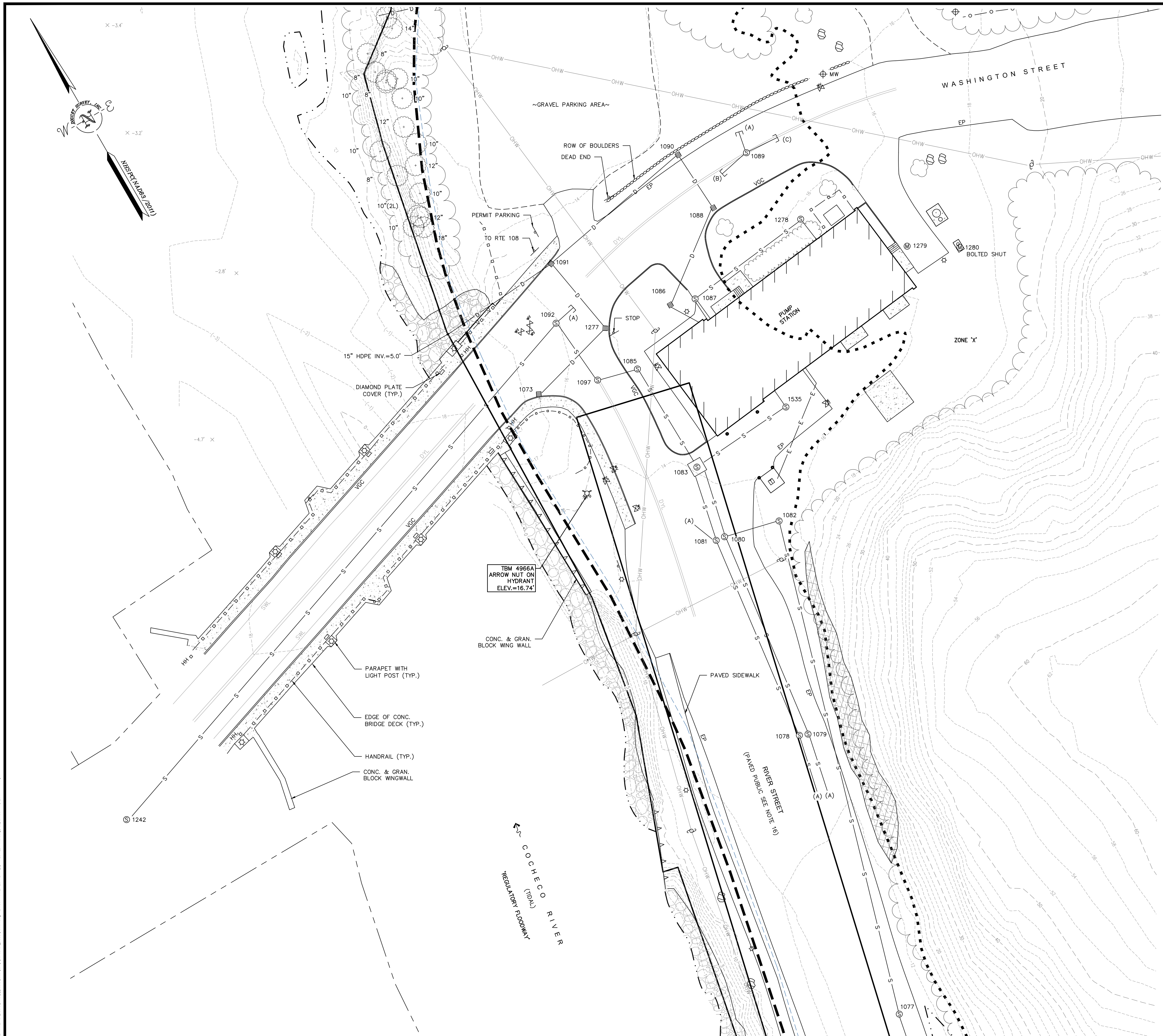
EXISTING CONDITIONS PLAN
 FOR
 HORSLEY WITTEN GROUP
 OF
 TAX MAP 22 LOT 1
 31 RIVER STREET
 DOVER, NEW HAMPSHIRE

NO.	DATE	DESCRIPTION	BY

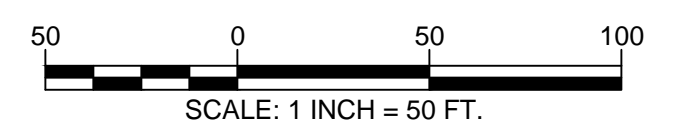
DRAWN BY:	M.T.L.	DATE:	AUGUST 2017
CHECKED BY:	J.F.K.	DRAWING NO.:	4966A
JOB NO.:	4966	SHEET	3 OF 4

DOUCET SURVEY
 Serving Your Professional Surveying & Mapping Needs
 102 Kent Place, Newmarket, NH 03857 (603) 659-6560
 2 Commerce Drive (Suite 202) Bedford, NH 03110 (603) 614-4060
 10 Storer Street (Riverview Suite) Kennebunk, ME (207) 502-7005
<http://www.doucetsurvey.com>

FILE NAME: C:\Users\matt\appdata\local\temp\45884546.dwg USER: mmm DATE: 8/2/17 11:44 AM



DRAINAGE STRUCTURES	SEWER STRUCTURES	SEWER STRUCTURES
CB 1073 RIM ELEV.=16.7' (1277) 12" RCP INV.=11.4'	SMH 1077 RIM ELEV.=11.5' (A) 24" ASB INV.=8.0' (1082) 24" ASB INV.=8.0'	SMH 1087 RIM ELEV.=15.2' SMH 1089—APPEARS TO BE DRAIN RIM ELEV.=14.5' (A) UNKN. INV.=9.5' (PLUGGED) (B) 12" PVC INV.=9.8' (C) 12" PVC INV.=9.8'
CB 1086 RIM ELEV.=13.9' (BLDG) 12" PVC INV.=10.8' (1088) 12" HDPE INV.=10.8'	SMH 1078 RIM ELEV.=12.5' (A) 36" RCP INV.=7.3' (1081) 36" RCP INV.=7.2'	SMH 1092 RIM ELEV.=16.1' (1089) 12" PVC INV.=9.5' (1242) 18" PVC INV.=9.5' (1092) 18" PVC INV.=9.2'
CB 1088 RIM ELEV.=14.1' (1086) 12" HDPE INV.=8.8' (1090) 12" RCP INV.=7.6'	SMH 1079 RIM ELEV.=12.4' (A) 24" ASB INV.=7.3' (1080) 24" RCP INV.=7.2'	SMH 1097 RIM ELEV.=15.5' (1079) 18" PVC INV.=9.3' (1082) 24" DIP INV.=7.0' (1083) 24" RCP INV.=7.0'
CB 1090 RIM ELEV.=14.1' (1088) 12" RCP INV.=7.4' (1091) 12" RCP INV.=6.6'	SMH 1080 RIM ELEV.=12.9' (1079) 24" RCP INV.=7.0' (1082) 24" DIP INV.=7.0' (1083) 24" RCP INV.=7.0'	SMH 1242 RIM ELEV.=16.1'
CB 1091 RIM ELEV.=15.2' (1277) 12" RCP INV.=10.8' (1090) 15" RCP INV.=5.7' (A) 15" HDPE (HOODED) WATER ELEV.=5.2'	SMH 1081 RIM ELEV.=13.0' (A) 15" PVC INV.=9.4' (1078) 36" RCP INV.=7.1' (1083) 36" RCP INV.=7.1'	SMH 1278 RIM ELEV.=16.3' RCP PIPES VISIBLE UNMEASURABLE
CB 1277 RIM ELEV.=15.3' (1073) 12" RCP INV.=12.3' (1091) 12" RCP INV.=12.0'	SMH 1082 RIM ELEV.=14.4' (1077) 24" ASB INV.=7.9' (1080) 24" DIP INV.=7.8'	SMH 1529 RIM ELEV.=14.5'
DMH 1530 RIM ELEV.=13.1'	SMH 1083 RIM ELEV.=13.9' (1085) 18" RCP INV.=N/A RECESSED (1080) 24" RCP INV.=7.0' (1081) 36" RCP INV.=6.8' (1535) 42" RCP INV.=6.6'	SMH 1531 RIM ELEV.=12.5' SMH 1535 RIM ELEV.=14.7' (1083) 42" RCP INV.=N/A RECESSED (BLDG) UNKN. INV.=N/A RECESSED
	SMH 1085 RIM ELEV.=15.3' (1097) 18" PVC INV.=9.5' (1083) 18" RCP INV.=9.3'	



EXISTING CONDITIONS PLAN
FOR
HORSLEY WITTEN GROUP
OF
TAX MAP 22 LOT 1
31 RIVER STREET
DOVER, NEW HAMPSHIRE

NO.	DATE	DESCRIPTION	BY

DRAWN BY:	M.T.L.	DATE:	AUGUST 2017
CHECKED BY:	J.F.K.	DRAWING NO.:	4966A
JOB NO.:	4966	SHEET	4 OF 4

FILE NAME: C:\Users\matt\appdata\local\temp\15584584\Map_Layout1.dwg; PLOTTED: Thursday, September 14, 2017 11:44 PM