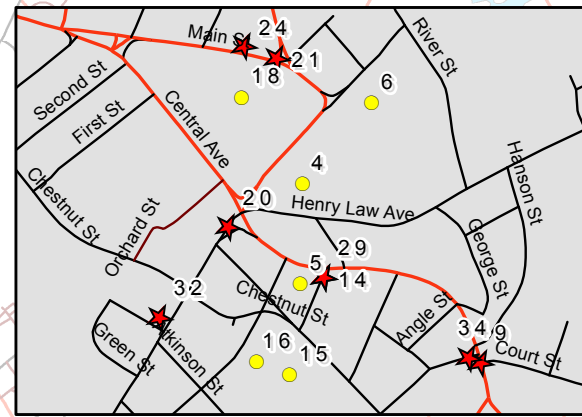


Data Sources:

City of Dover Assessor's Office Building Data - 2005 & 2015
 GRANIT Conservation & Public Lands Datalayer - 2015
 GRANIT NHDOT Roads & Highways - 2016
 NHDOT Aerial Photography - 2005 & 2010
 Dover Historic Commission & Master Plan Committee - 2016

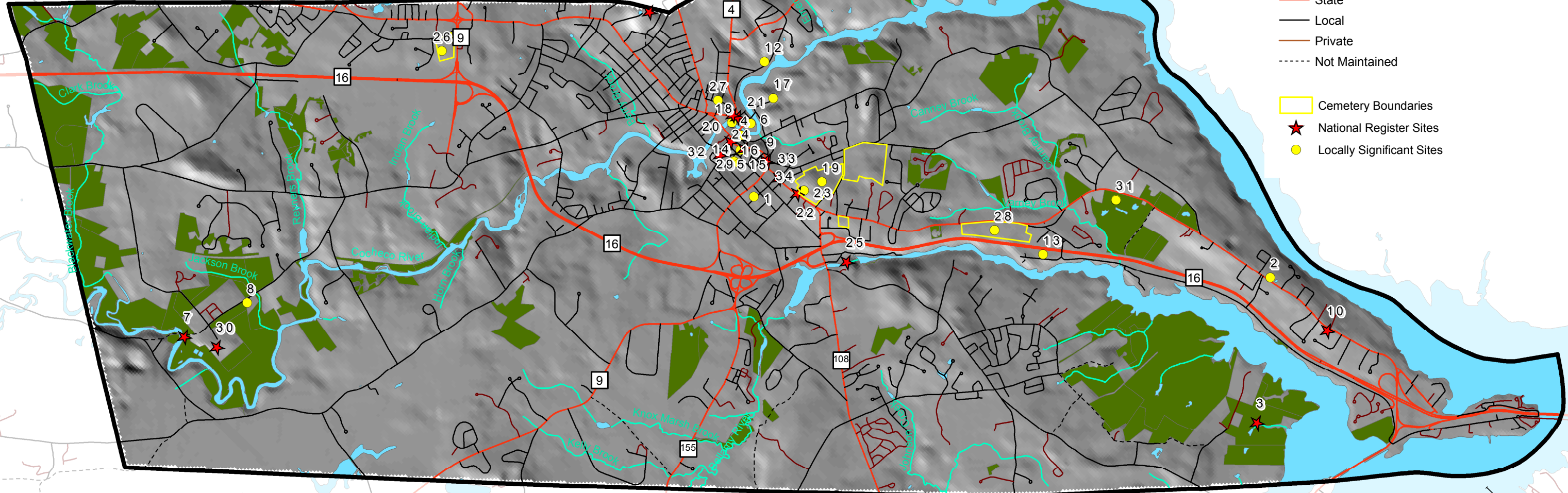


Downtown Sites

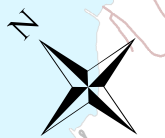


Historic Sites City of Dover, NH

- Municipal Boundary
- Lot Lines
- Streams
- Water Features
- Permanently Protected Land
- Local Highways & Roads**
- State
- Local
- Private
- Not Maintained
- Cemetery Boundaries
- National Register Sites
- Locally Significant Sites



Number	Site Name	Number	Site Name
1	1st Municipal Hospital	18	Pacific Mill
2	1st Settlers Cemetery	19	Pine Hill Cemetery
3	Back River Farm	20	Public Market
4	Childrens Museum - Former Armory	21	Reade, Michael, House
5	City Hall	22	Religious Society of Friends Meetinghouse
6	Cocheco Mfg Company Mill	23	Ricker Chapel
7	County Farm Bridge	24	Sawyer Building
8	First Alms House Site	25	Sawyer Woolen Mills
9	First Parish Church	26	St Charles Cemetery
10	First Parish Church Site-Dover Point	27	St Johns Methodist Episcopal Church
11	Garrison Hill Park and Tower	28	St Marys Cemetery
12	Gas Mfg Plant Site	29	St. Thomas Episcopal Church
13	Greek Cemetery	30	Strafford County Farm
14	Hale, William, House	31	Tuttle Farm
15	Library	32	US Post Office--Dover Main
16	McConnell Center - Former High School	33	Woodman Institute
17	Old County Jail Site	34	Wyatt, Samuel, House



Mapping Prepared by:
 Resilience Planning & Design
 in partnership with FitzDesign & GreenFire GIS

July 29, 2016