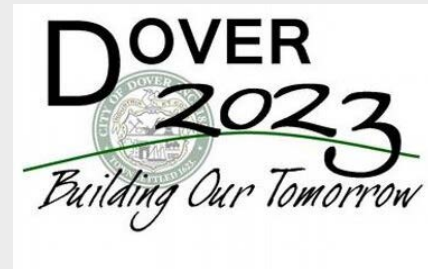




Transportation Chapter of Master Plan

City of Dover



Steering Committee Meet and Greet

August 24, 2015

Introductions



Steering Committee

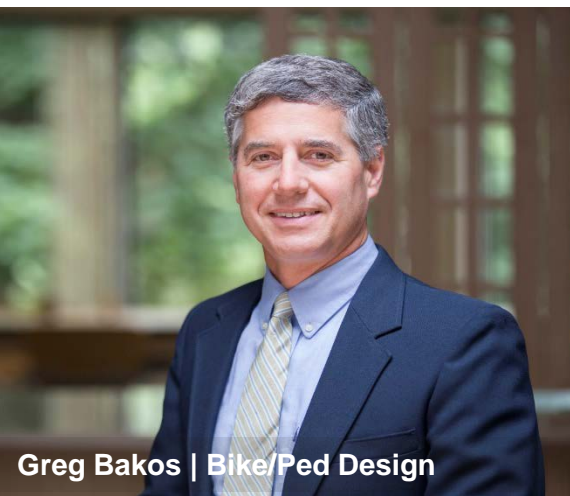
Lee Skinner	Planning Board Representative
Moe Olivier	Transportation Advisory Commission
Dana Lynch	Citizen volunteer
Eric Swanson	Citizen volunteer
Daniel Toland	Citizen volunteer
Matt Hanson	Citizen volunteer
Jon Niehof	Citizen volunteer



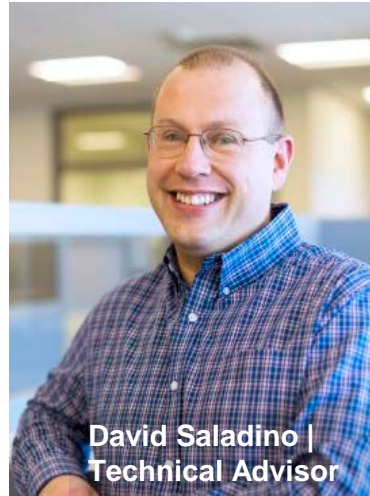
Robin Bousa | Project Manager



Geoffrey Morrison-Logan |
Urban Planning



Greg Bakos | Bike/Ped Design



David Saladino |
Technical Advisor



Colin Foley |
Transit Planning



Steve Hodgdon |
Bridge
Engineering



Gordon Leedy |
Landscape
Architecture



Nick Sanders |
Transportation
Planning



Chris Bobay |
Traffic Engineering



Dale Abbott | GIS



Marty Kennedy |
Principal-in-Charge | Public Outreach

Project Priorities, Goals, and Objectives

- Align with **vision** and land use chapters
- Address range of **modes** and abilities
- Enhance **connectivity** and **walkability**
- Identify **traffic calming** opportunities and measures
- Update local polices and set **performance measures**

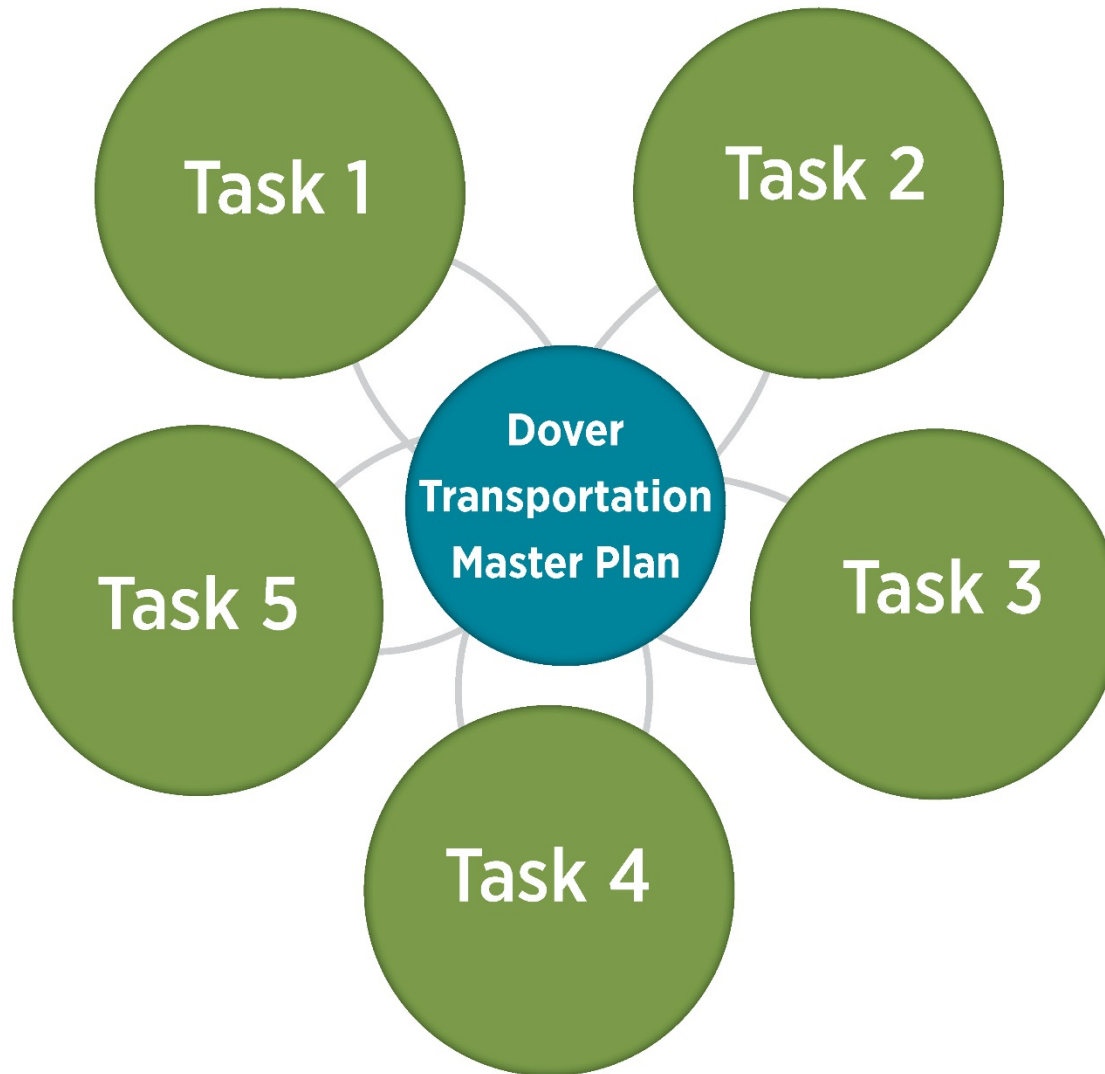


Scope of Services



**Task 1: Develop a Full Understanding of
Dover's Transportation System**
Month 1-Month 1.5

Task 2: Synthesize Data
Month 1.5-Month 4.5



**Task 3: Evaluate
Strategic Alternatives**
Month 4.5- Month 7.5

**Task 5: Meetings and
Public Engagement**

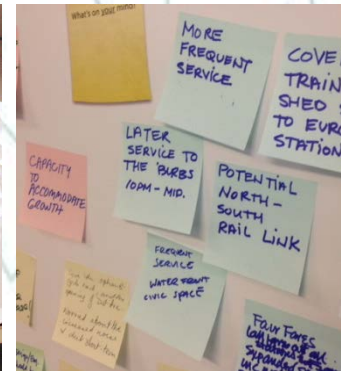
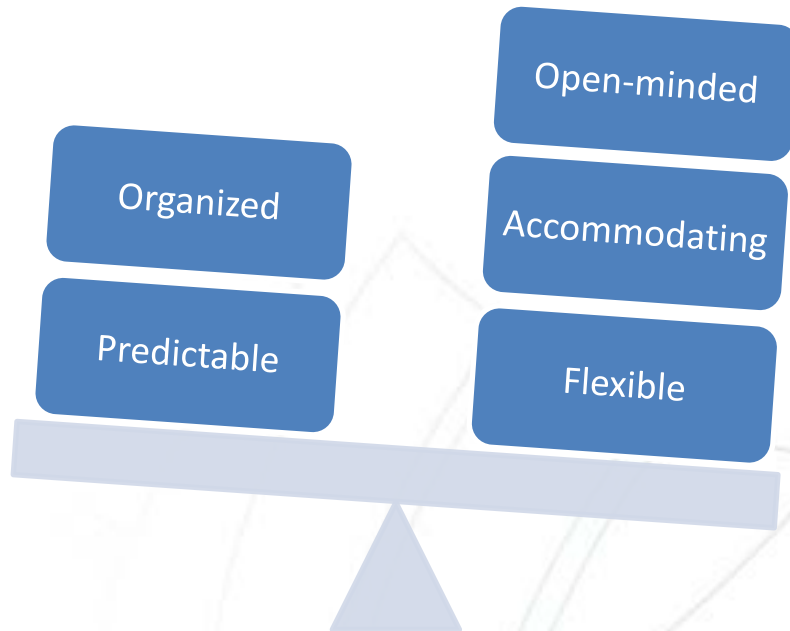
**Task 4: Draft and Final
Transportation Chapter**
Month 7.5- Month 10.5

Public Engagement Process



Public Engagement Process

We need a balanced process that is both structured yet adaptable



Steering Committee & Public Meetings



External Communication

- Newsletter
- Website
- Email Distribution List

The screenshot shows the website for the 2015 Hampton Beach Transportation Master Plan Update. The header includes the New Hampshire Department of Transportation (NH DOT) logo and the title "2015 Hampton Beach Transportation Master Plan Update". A navigation menu on the left lists: Home, Study Schedule, Documents, Meetings, Contacts, and Feedback/Working List. The main content area is titled "Study Overview" and contains the following text:

Hampton Beach is an important natural and economic resource for the State of New Hampshire. Generations of people from throughout the region have come to the Beach to enjoy its amenities, and to get away from more urban centers. With the completion of a major redevelopment of the State Park facilities immediately adjacent to the beach, attention has turned to addressing the transportation and mobility issues associated with the Hampton Beach area.

The New Hampshire Department of Transportation (NH DOT) has initiated a project with the Hampton Beach Area Commission (HBAC) to update the transportation components of the current Hampton Beach Area Master Plan with consideration of environmental impacts, improved mobility, safety, economic development, and quality of life. The project will be conducted in three phases:

- Part A consists of a planning-level study, updating the transportation components of the 50-year Hampton Beach Area Master Plan.
- Part B consists of advancing preliminary engineering plans for improvements identified as priorities in the plan update.
- Part C consists of final design and construction of improvements identified in the Master Plan update.

Part B will take the recommendations that emerge from the planning process and advance preliminary design and detailed cost estimates that can be used to move the projects forward toward implementation. **The phases of the project that are currently underway consist of Parts A and B only.**

Key to the development and refinement of the alternatives that are to be carried forward is an open and consensus-driven public participation process that engages all stakeholders. Good planning practice involves a mutual learning process among practitioners, elected officials, residents, business groups, citizen groups and other affected parties. Your thoughts and ideas are critical to crafting and refining smart transportation solutions that are practical, permissible, affordable and context sensitive in meeting the area's transportation needs. [View: www.nhdot.gov/Info/LetUsTalk](http://www.nhdot.gov/Info/LetUsTalk)

The study schedule extends through December 2015 and culminates in report that will recommend appropriate conceptual alternatives to be carried forward for further development of preliminary engineering plans and formal environmental documentation.

The image displays the cover and content pages of "Holyoke's Center City Vision Plan: A Plan for the Heart of Our Community". The cover features a map of the city center, a 3D architectural rendering of buildings, and a car on a road. The title "HOLYOKE'S CENTER CITY VISION PLAN" is prominent, with the subtitle "A Plan for the Heart of Our Community". It is dated August 2009 and prepared for the City of Holyoke and the Holyoke Redevelopment Authority. The plan was prepared by Lawson Plunger Brudvik, Inc.

The content pages show a table of contents for "THE VISION PLAN" with sections for "ARTICULATED VISION" and "PROPOSALS". To the right, there are two numbered sections: "1 KEY MESSAGE" and "2 HOW TO USE THIS PLAN". Below these are several maps and diagrams illustrating the vision plan's components, including a street grid, a 3D rendering of a building, and a street view.

Data Gathering



Task 1 - Develop a Full Understanding of Dover's Transportation System

Planning Documents

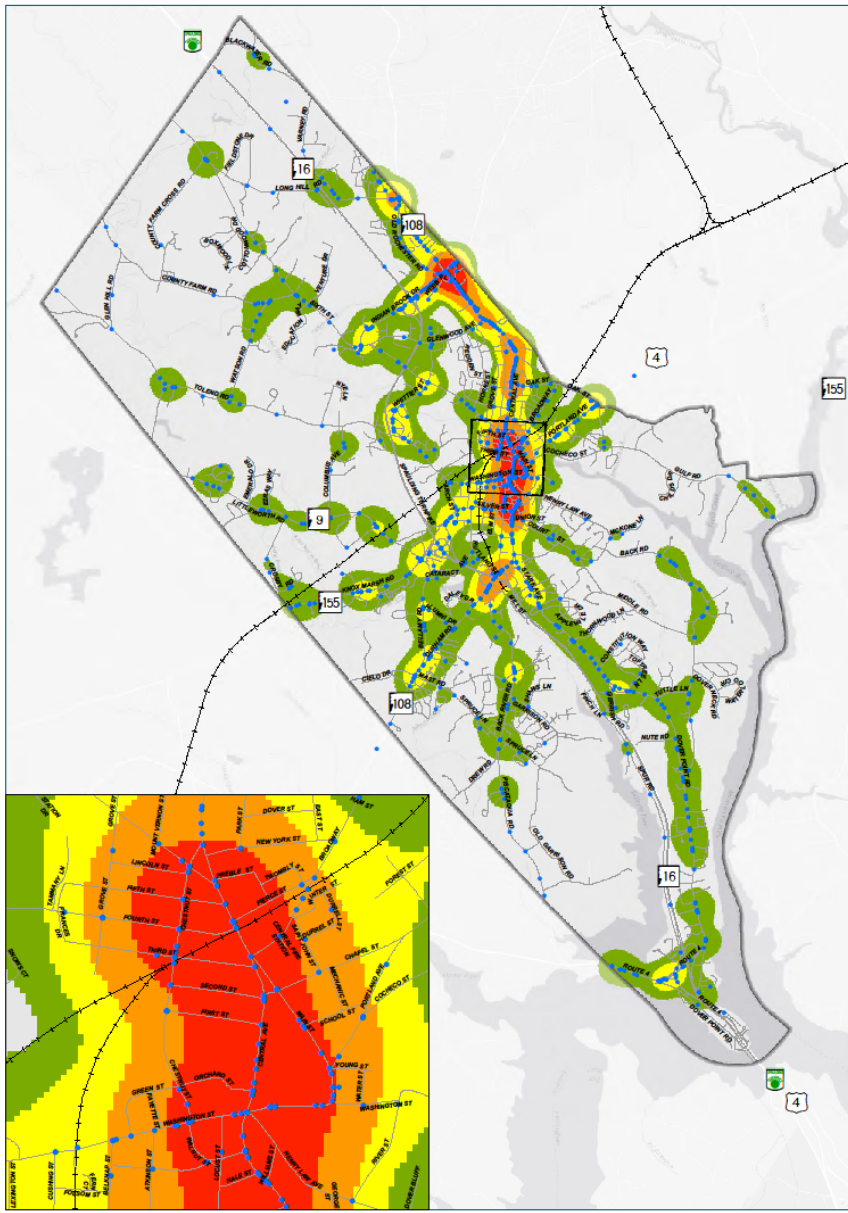
- 2012 Vision
- 2015 Land Use
- 2015 Downtown Pedestrian & Vehicle Access Study
- 2008 Parking Facility & Management Study
- State & Regional Transportation Plans
- Traffic Impact Studies

Infrastructure

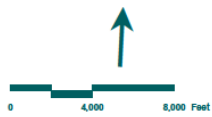
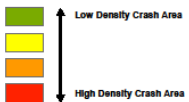
- Road Class and Ownership
- Sidewalks
- Crosswalks
- Trails
- Transit Routes, Stops & Amenities
- Parking Lots & Spaces
- Bridges

Data & Characteristics

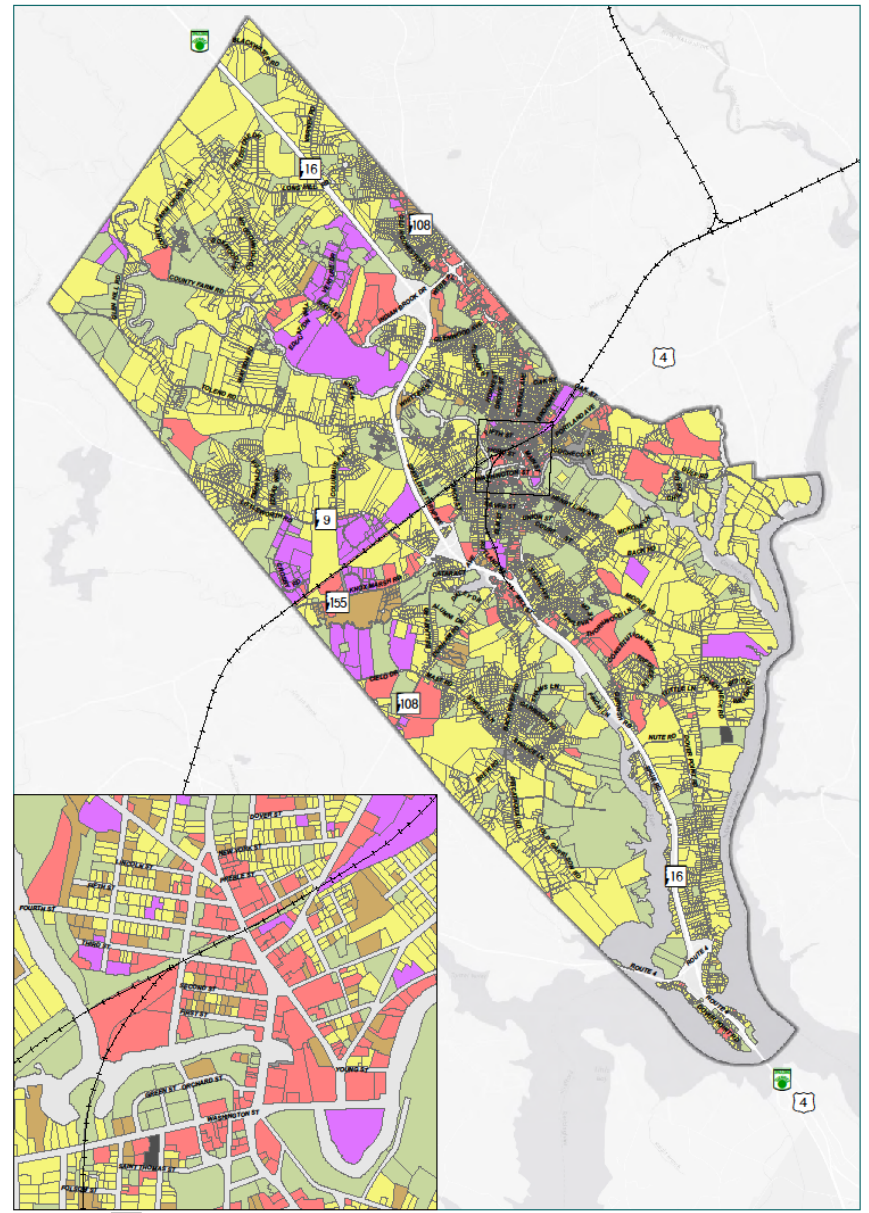
- Traffic Volumes
- Speed Data, 23 locations
- Crash Data 2009-2014
- Points of Interest
- Land Use



• Crash Locations 2009 - 2013

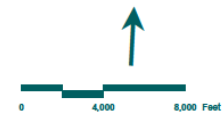


vhb
 Crash Locations 2009-2013
 Transportation Master Plan Update
 City of Dover, NH

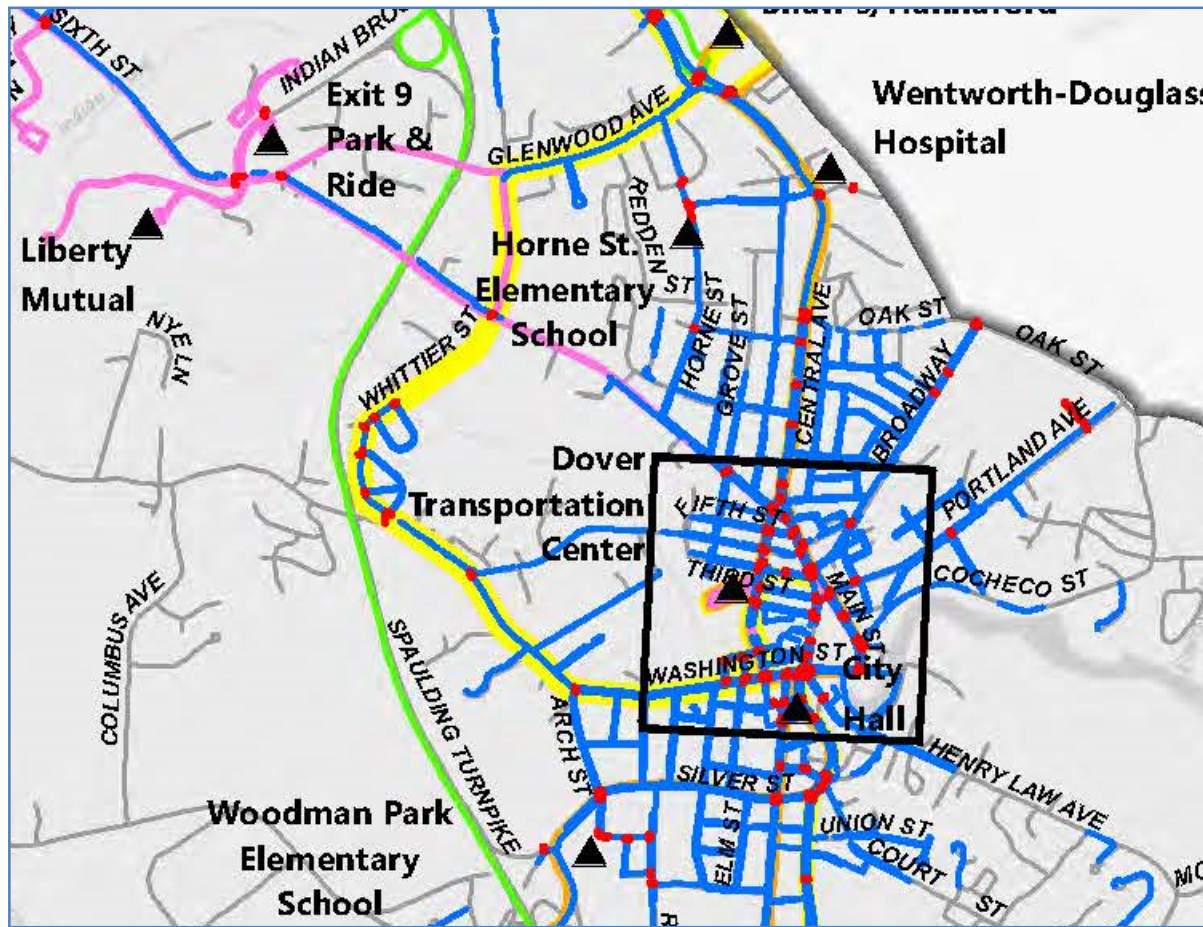


Land Use Class

- Residential
- Exempt
- Commercial
- Agricultural
- Industrial
- Utility 1
- Utility 2
- Other



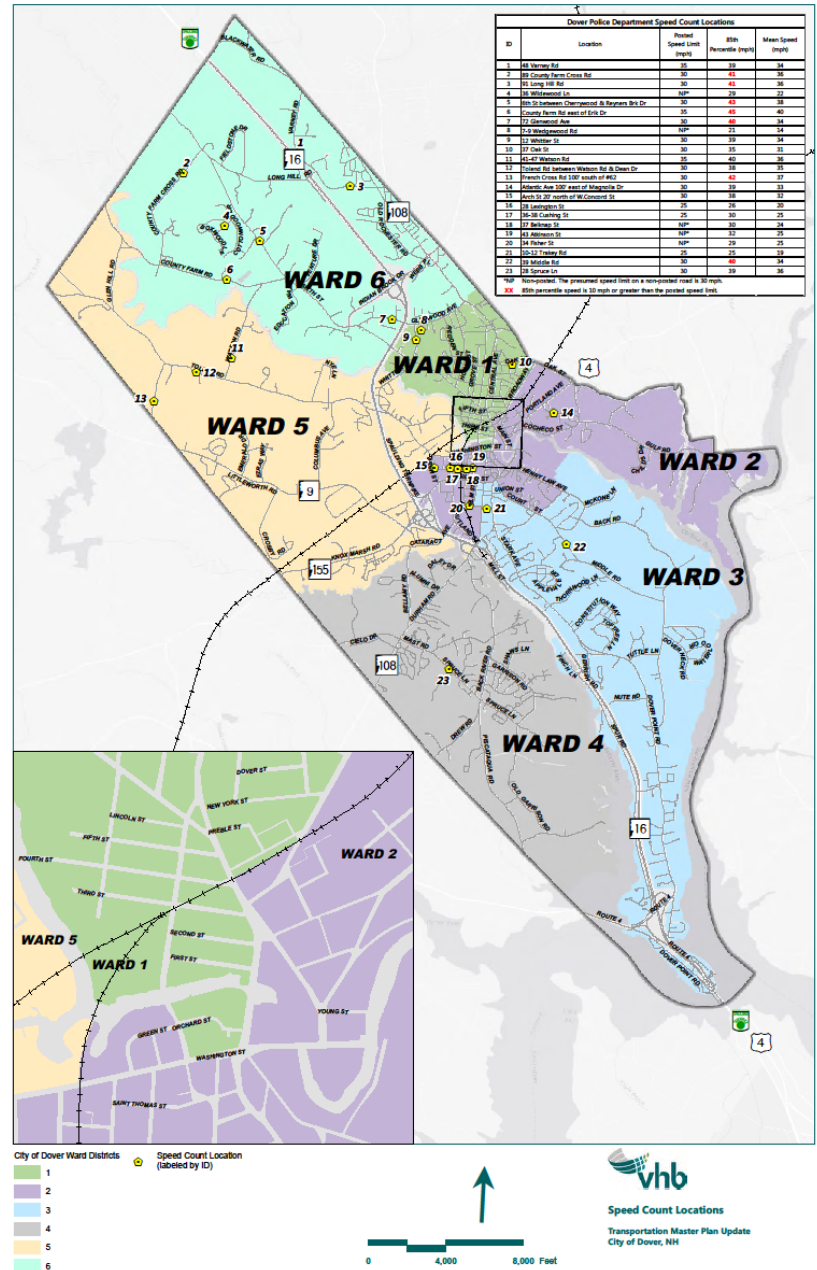
vhb
 Existing Land Use
 Transportation Master Plan Update
 City of Dover, NH



- ▲ Special Generators
- Existing Crosswalk
- Existing Sidewalk
- ▲ COAST Bus Routes
- Clipper Connection
- Dover Fast Trans
- COAST Regional Routes
- Wildcat Transit Routes
- Wildcat Transit Route 3

Your homework assignment...

Identify potential locations for a speed study in each ward.

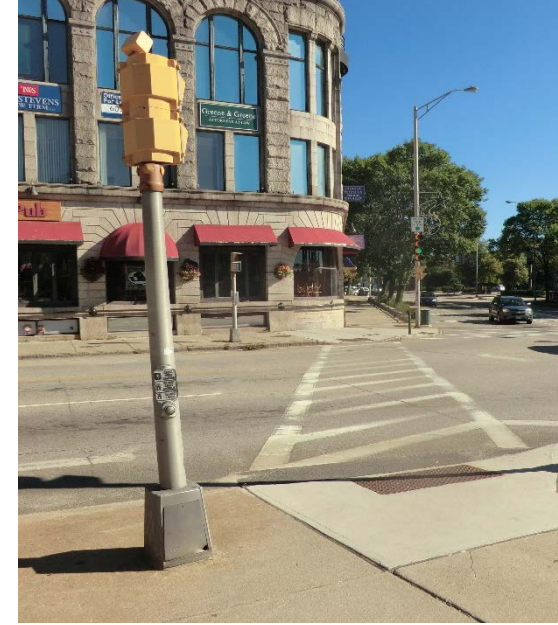


Next Steps



- Selection of Committee Chairperson
- Next Meeting
 - Special TAC Meeting in September will serve as kick-off meeting





www.vhb.com

Robin Bousa | rbousa@vhb.com | 603.391.3912



Offices located throughout the east coast