

Detailing Dover, Demographically



A COMMUNITY PROFILE

Statistics from Calendar Year 2013

January 2014

Dover At A Glance

Dover, founded in 1623, is the oldest continuous settlement in New Hampshire and the seventh oldest in the United States. The permanent settlement occurred in what is now the Dover Neck area.

Initially, Dover was an independent colony named Northam. In 1692 Northam became part of the Massachusetts Bay Colony. The original township of Dover included the present towns of Dover, Durham, Lee, Madbury, Somersworth, Rollinsford, and parts of Newmarket, Newton, and Greenland.

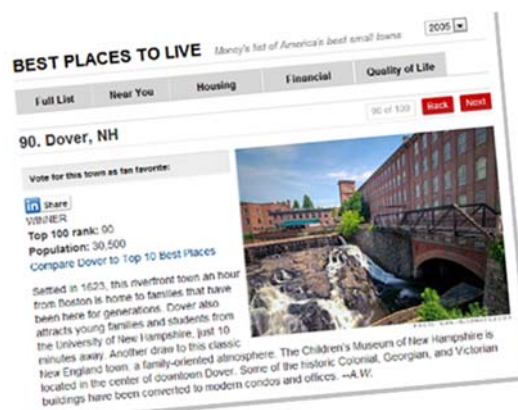
Dover has always used the Cochecho and Bellamy Rivers to its economic advantage. The first use of the water power of the Cochecho River was in 1642, when a sawmill was built. In the 1700s Dover had an extensive shipbuilding industry. By 1830, the city had become a leading manufacturer of cotton goods in the country, using the river to power several mills. Later in the nineteenth century, a brick industry flourished and shoe manufacturing developed in the 1900's.

Between 2000 and 2010, Dover was the fastest growing community in New Hamp-

What's Inside:

This community profile will walk you through Dover's population growth, introduce you to Dover's demographics, such as:

- Vital Records
- Housing Starts and Ages
- Vehicle Registrations



Dover in the fall

shire, gaining over 3,000 residents and moving from the 7th most populous community to 5th most. This growth has been driven by, and reflective, of the changes that have occurred in Dover over the past 15 years, including the development of the Downeaster train service through Dover, the coming of the Children's Museum of New Hampshire, and the economic growth of Liberty Mutual, Measured Progress and Wentworth Douglass Hospital.

- Income

Also included is climate information, and general geographic information about Dover and south eastern New Hampshire.

Finally, you will find information about Dover's economic health and municipal operations.

Our Mission:

To provide affordable, high quality municipal services and responsive accessible local governance ensuring all persons the opportunity to enjoy contributing to and being part of the Dover community

Contents:

GEOGRAPHY	2
PEOPLE	3
VITAL STATISTICS	4
TRANSPORTATION	4
BUILDING/HOUSING	5
CULTURAL/SOCIAL	6
RECREATION	7
ECONOMIC	8
MUNICIPAL	9
LAND USE MAP	10
DEVELOPMENT MAP	11

Detailing Dover, Demographically

Geographic Location



Dover's location in New Hampshire, and Strafford County

	Longitude (W)	Latitude (N)
Eastern	70° 49' 16"	43° 11' 40"
Western	70° 57' 40"	43° 12' 56"
Northern	70° 55' 30"	43° 15' 5"
Southern	70° 49' 38"	43° 7' 9"
Center	70° 52' 43"	43° 11' 28"
Altitude		
Max (301')	70° 55' 34"	43° 13' 50"
Min (0')	70° 49' 38"	43° 7' 9"

The City of Dover is the county seat for Strafford County, which lies in southeastern New Hampshire, bordering the state of Maine. Dover is bisected by the Spaulding Turnpike (NH Route 16) which connects northern New Hampshire and the Seacoast region. Additionally, NH and US Routes 4 travel through Dover, as do Routes 155, 108 and 9.

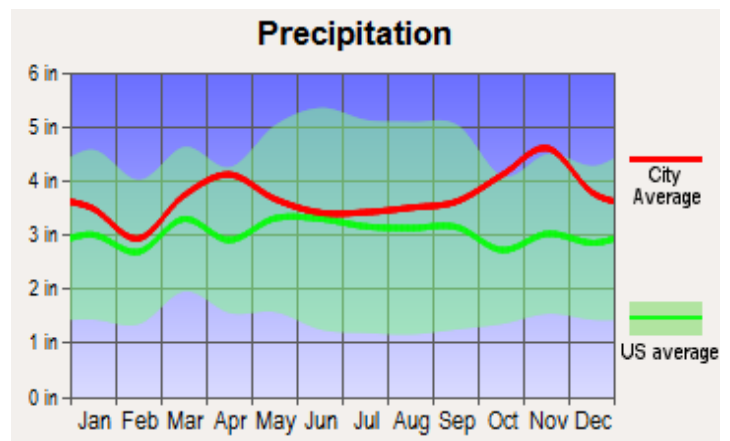
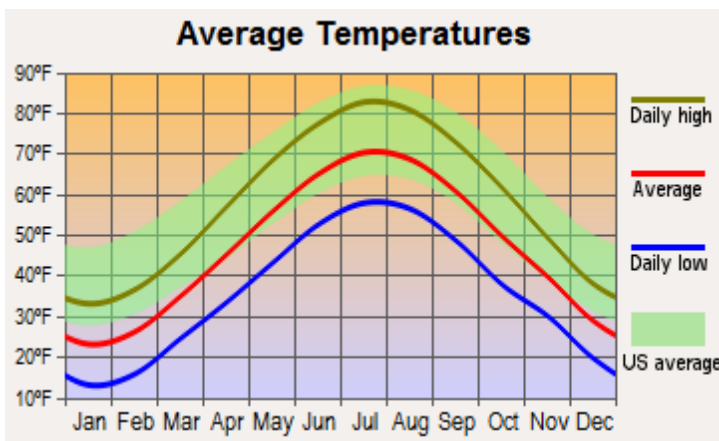
Bisecting the City is the Cochecho River. Along the eastern border with Maine, runs the Piscataqua River, and along the western side of the City is the Bellamy River. The Cochecho River empties into the Piscataqua River, which flows to the Atlantic. The Bellamy empties into Great Bay, which empties into the Piscataqua River.

Area (in acres)

Land	17,087
Commercial	388.7
Industrial	993.2
Institutional	318
Misc	413.2
Residential	5,356.2
Vacant	9,627.6
Watercourses	1,500
Totals	18,587

Dover is nestled between the mountains and the ocean. The community is close to the University of New Hampshire and the Pease International Tradeport. The city is a short drive to the Port of New Hampshire, the state's only deep water port, scene to industrial barges escorted by tugs, importing and exporting goods to and from the Granite State. Dover is a quick commute to the metropolitan area of Boston, and less than an hours drive to Boston's Logan International Airport and Manchester Boston Regional Airport. In addition the Amtrak Downeaster stops in Dover.

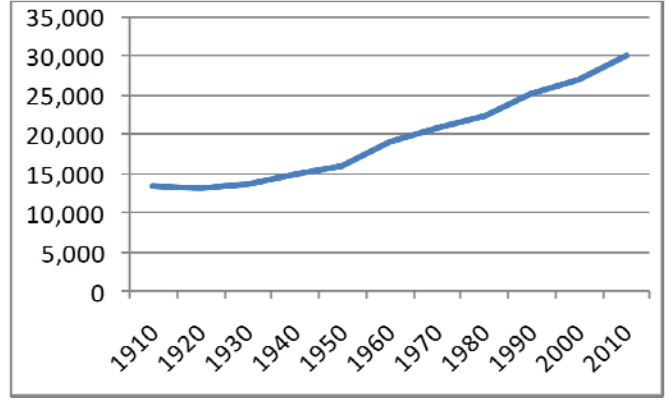
Average Temperature, and Rainfall



Statistics from Calendar Year 2013

Population

	Population	Change from Preceding Census	
		Number	Percentage
1910	13,247	N/A	N/A
1920	13,029	-218	-1.6%
1930	13,573	544	4.2%
1940	14,990	1,417	10.4%
1950	15,874	884	5.9%
1960	19,131	3,257	20.5%
1970	20,850	1,719	9.0%
1980	22,377	1,527	7.3%
1990	25,042	2,665	11.9%
2000	26,884	1,842	7.4%
2010	29,987	3,103	11.5%

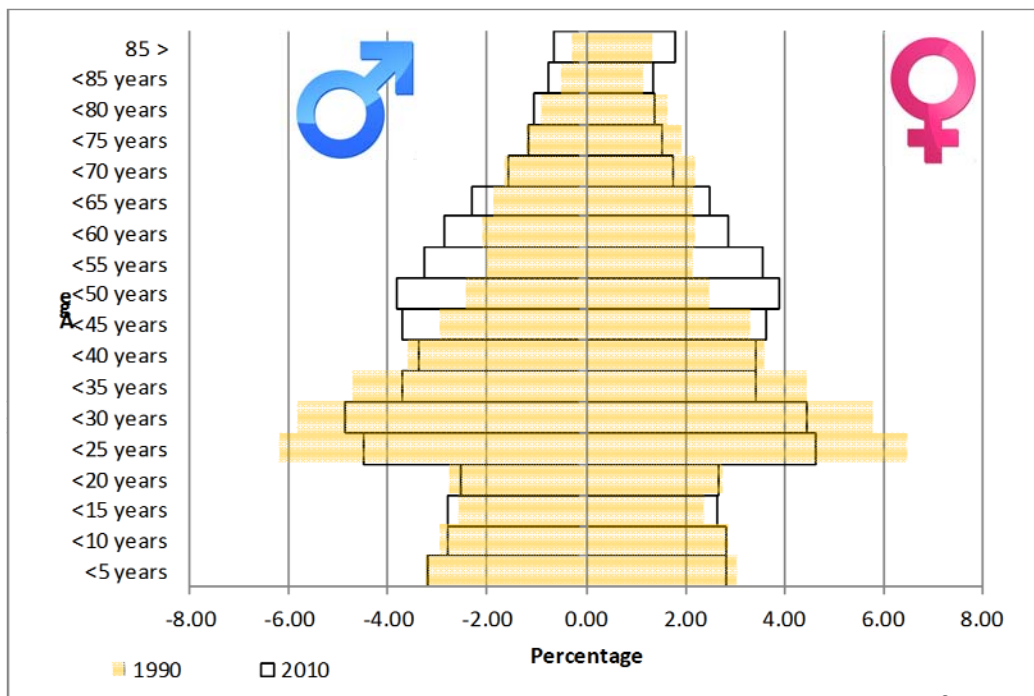


Diversity

Total Pop	Total*	White		African American		American Indian and Alaska Native		Asian		Native Hawaiian & Other Pacific Islander		Some Other Race		Hispanic or Latino (of any race)	
		#	%	#	%	#	%	#	%	#	%	#	%	#	%
29,987	29,307	27,155	92.7	521	1.8	59	0.2	1,371	4.7	14	0.05	187	0.6	660	2.3

* based upon census responses

Population Pyramid Comparison (1990 & 2010)



“DOVER ADDED 3,103 RESIDENTS BETWEEN 2000 AND 2010, GROWING THE FASTEST OF ANY COMMUNITY IN NH.”

Detailing Dover, Demographically

Vital Statistics

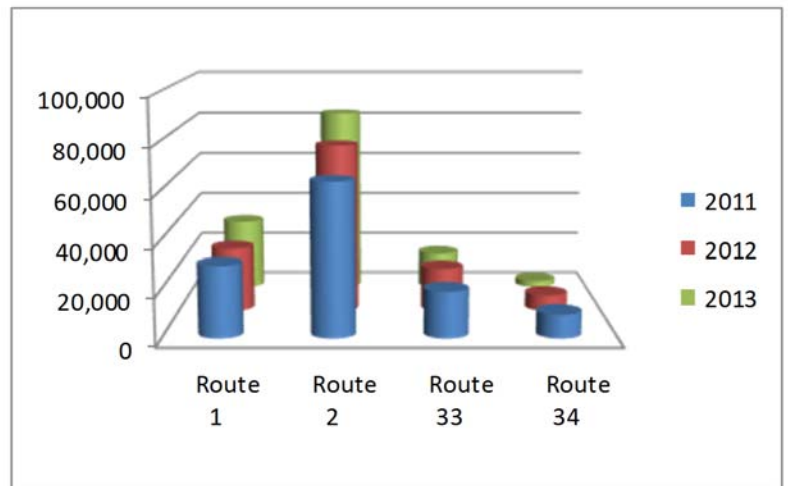
	Births	Deaths	Marriage Licenses
2011	158	274	202
2012	168	257	214
2013	121	274	310

Motor Vehicle Registrations

	Vehicles Registered
2011	29,280
2012	30,486
2013	30,758



COAST Ridership (CY 2011: 2013)

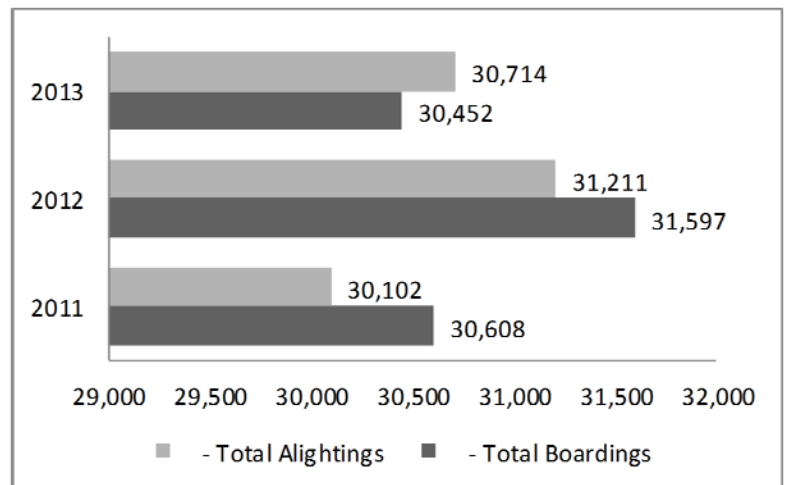


Dover is served by two main regional transportation systems, Amtrak's Downeaster service, and the Cooperative Alliance for Seacoast Transportation (COAST).

The Downeaster service runs between Boston, Ma and Brunswick Me, and stops in Dover seven times daily.

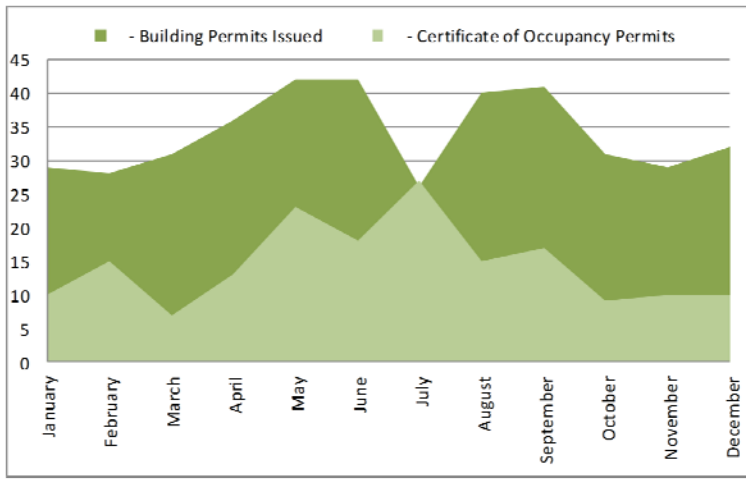
COAST runs multiple inter-city bus routes throughout the Portsmouth/Dover/Rochester area, with a main junction point at the Dover Transportation Center.

Downeaster Ridership (CY 2011: 2013)



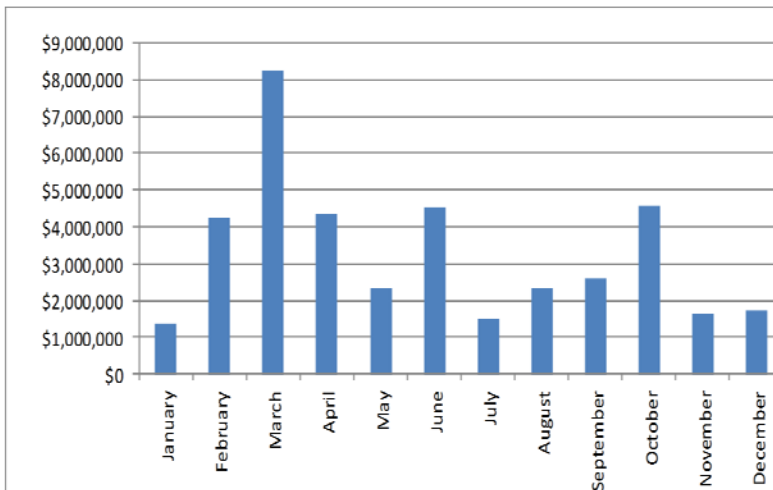
Statistics from Calendar Year 2013

Building Permits/Certificates of Occupancy:

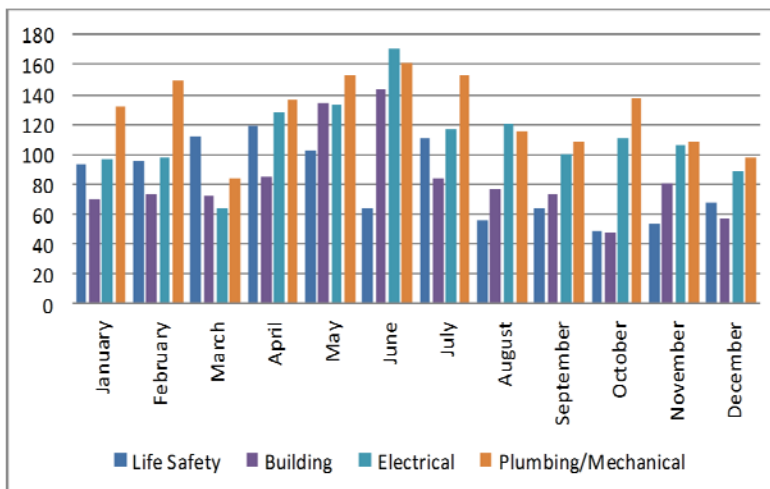


Age of Homes	Number Built
1600-1699	3
1700-1799	73
1800-1899	944
1900-1950	1576
1951-1955	442
1956-1960	767
1961-1965	426
1966-1970	158
1971-1975	372
1976-1980	380
1981-1985	578
1986-1990	821
1991-1995	278
1996-2000	558
2001-2005	792
2006-2010	349
2011-2015	189

Monthly Total Construction Value:



Monthly Inspections by Type:



AN AVERAGE OF **87** BURN PERMITS WERE ISSUED, A MONTH, IN 2013 TO DOVER RESIDENTS, A **DECREASE** FROM 91 IN 2012.

Detailing Dover, Demographically



Dover is served by:

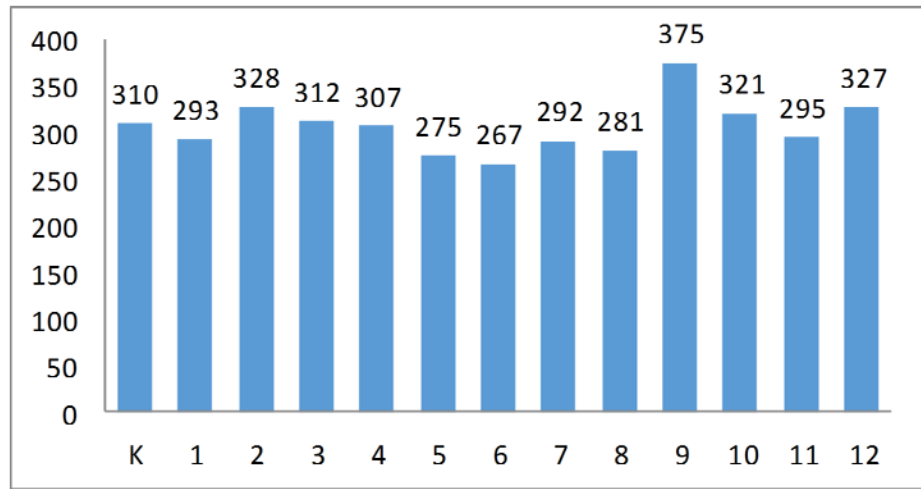
- three public elementary schools,
- one public middle school
- one public high school.

Dover High is host to a regional Career Technical Center, offering hands on training in various trades, and in 2005 it was named a New Hampshire School of Excellence.

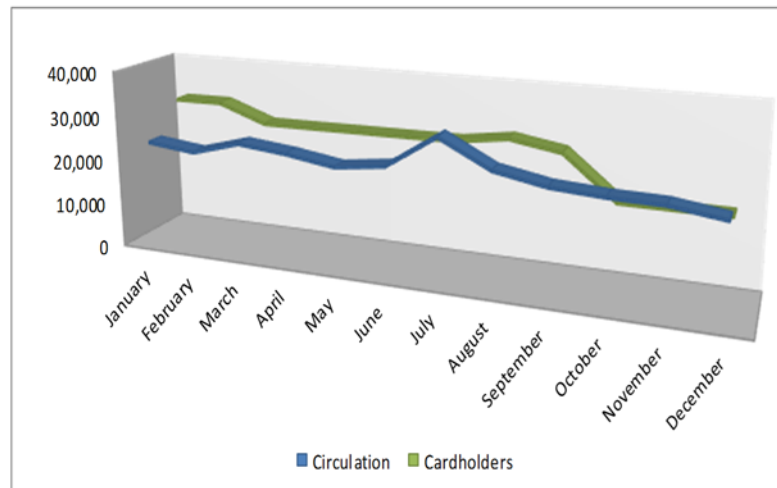
Additionally, there are two private high schools, a private elementary school and a charter high school.

“AN AVERAGE OF **606** PEOPLE A DAY VISITED THE LIBRARY, WHICH WAS OPEN AN AVERAGE OF **25** DAYS A MONTH, IN 2013”

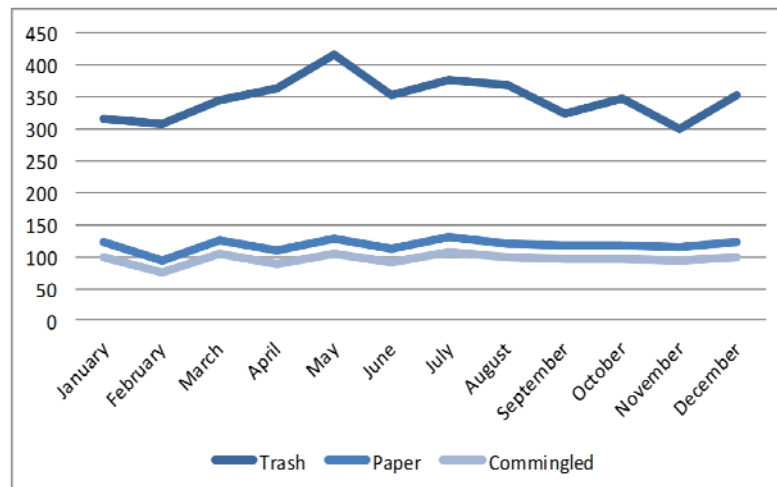
Public Educational Enrollment School Year 2013-14



Library Usage:

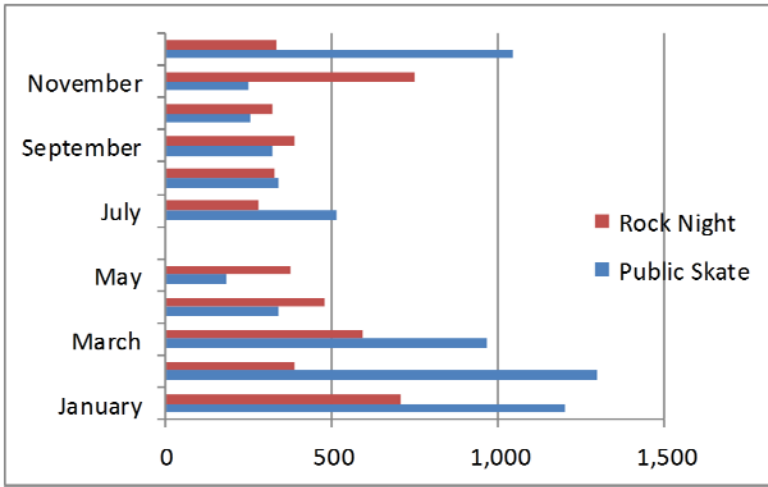


Curbside Solid Waste/Recycling Tons Collected:



Statistics from Calendar Year 2013

Dover Ice Arena Usage:

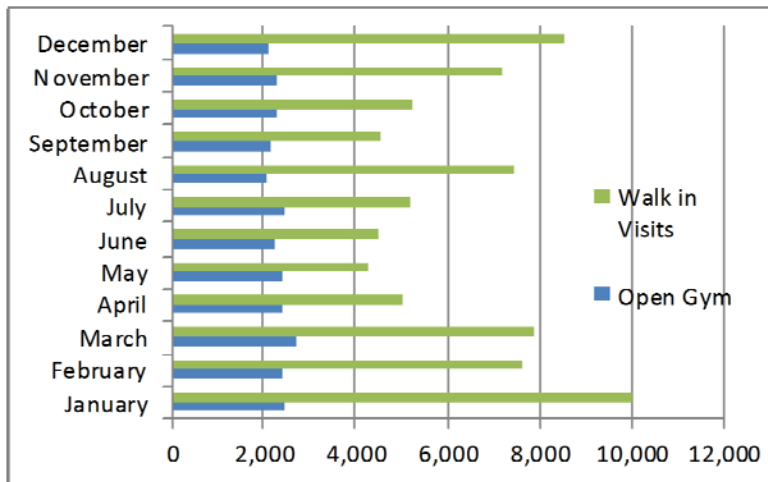


	Walk In Visitors	
	Arena	Indoor Pool
January	33,213	6,213
February	27,399	7,834
March	18,149	8,237
April	14,983	7,267
May	8,860	6,872
June	7,448	6,452
July	11,747	7,823
August	13,267	2,823
September	15,249	6,678
October	23,570	9,245
November	24,998	7,625
December	27,523	8,145

Senior Center Usage

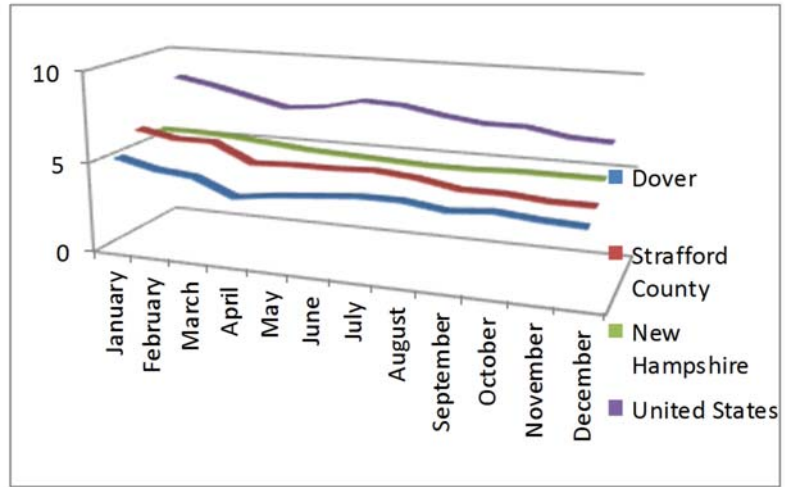
	2011	2012	2013
Memberships	489	513	556
Participants on Trips	782	868	879
Daily Game/Class Participants	9,056	10,218	11,070
Walk ins, no particular activity	8,428	11,009	12,275
Total Number of Visitors	19,504	25,267	27,873

McConnell Center Recreation Usage:



Detailing Dover, Demographically

Unemployment Percentage Rates:



EMPLOYMENT & WAGES

Annual Average	2001	2011
Covered Employment		

Goods Producing Industries

Average Employment	2,858	1,318
Average Weekly Wage	\$779	\$1,374

Service Providing Industries

Average Employment	10,425	13,491
Average Weekly Wage	\$599	\$995

Total Private Industry

Average Employment	13,283	14,809
Average Weekly Wage	\$638	\$1,029

Government (Federal, State, and Local)

Average Employment	1,789	1,777
Average Weekly Wage	\$589	\$756

Total, Private plus Government

Average Employment	15,072	16,586
Average Weekly Wage	\$632	\$999

Labor Force (Annual Average)

	2001	2011
Civilian Labor Force	16,159	18,149
Employed	15,684	17,319
Unemployed	475	830

Welfare Usage (CY 2011: 2013)

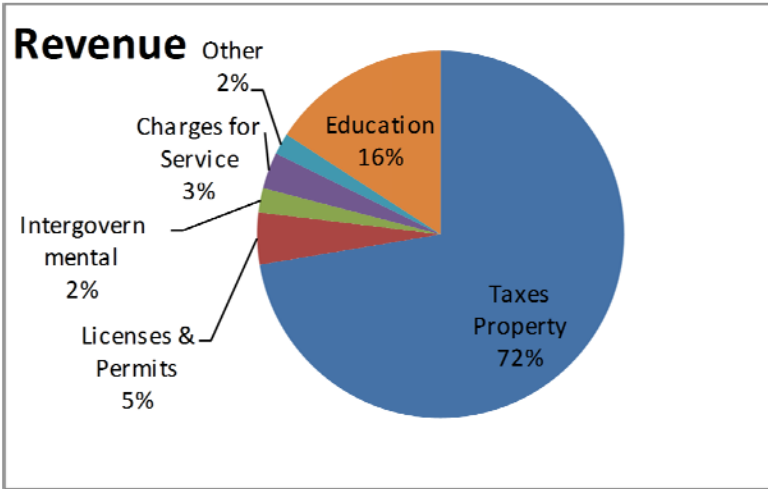
	2011	2012	2013
Number of Contacts (walk-ins only)	6,227	6,143	5,451
# of Cases Assisted	1,860	1,927	1,664
Case Expenditures	\$570,829	\$630,157	\$563,385

Annual Income (Adjusted for Inflation)

Per capita income	\$31,795
Median family income	\$80,994
Median household income	\$57,083
Median Earnings, full-time, year-round workers	
Male	\$52,604
Female	\$37,754
Families below the poverty level	6.70%

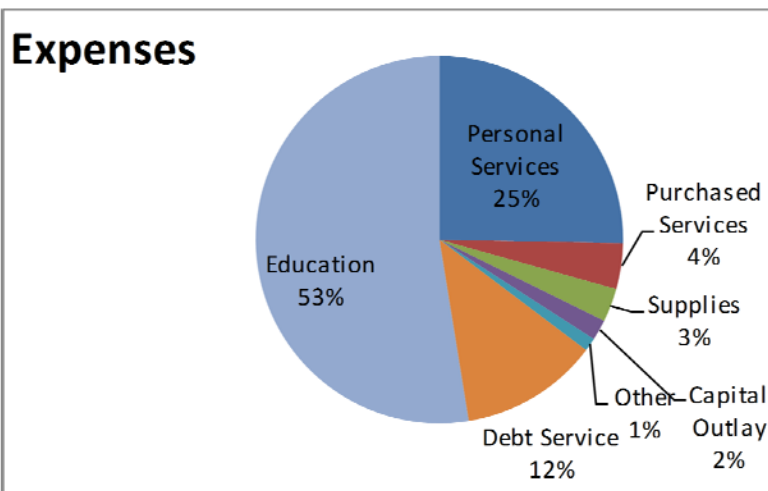
Statistics from Calendar Year 2013

Municipal Budget FY14

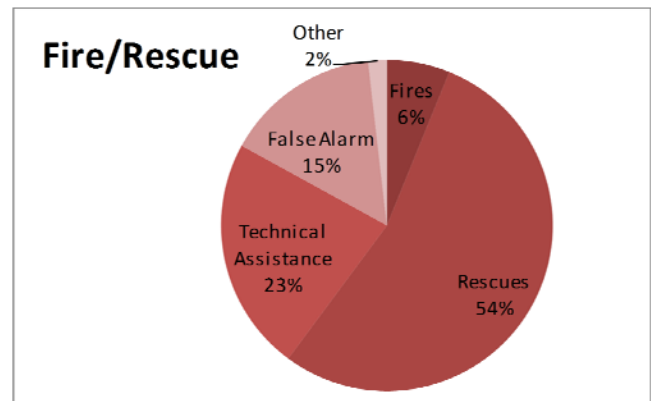
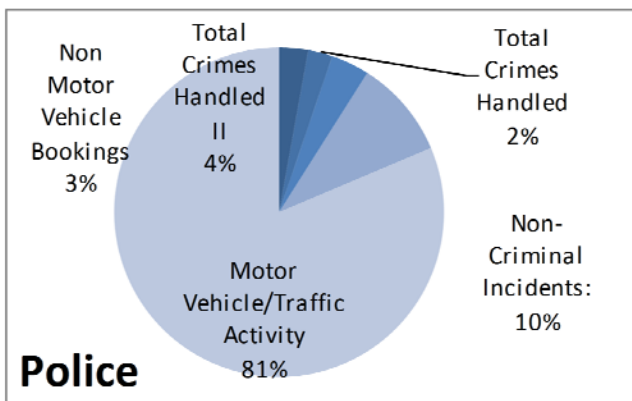


	FY12	FY13	FY14
Tax Rate	\$25.12	\$25.52	\$25.97
Water Rate	\$3.97	\$4.36	\$4.69
Sewer Rate	\$5.43	\$5.78	\$6.53

# of Full Time Equivalent Employees:	
Department	
Community Services	65
Executive	8
Finance	21
Fire & Rescue	60
Library	13
Planning	6
Police	77
Public Welfare	3
Recreation	31
Total	283

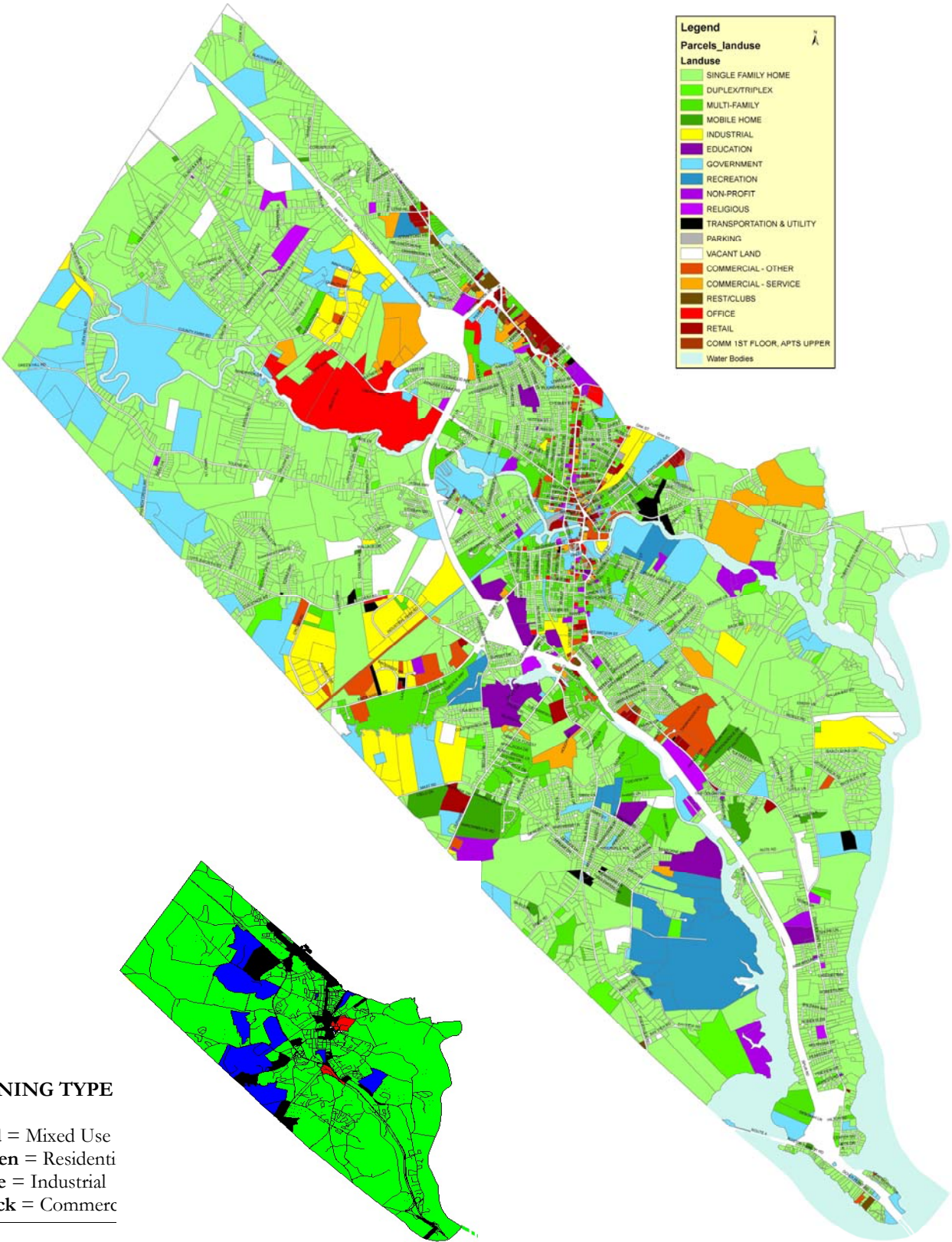


Public Safety Service Call Areas: CY 2013



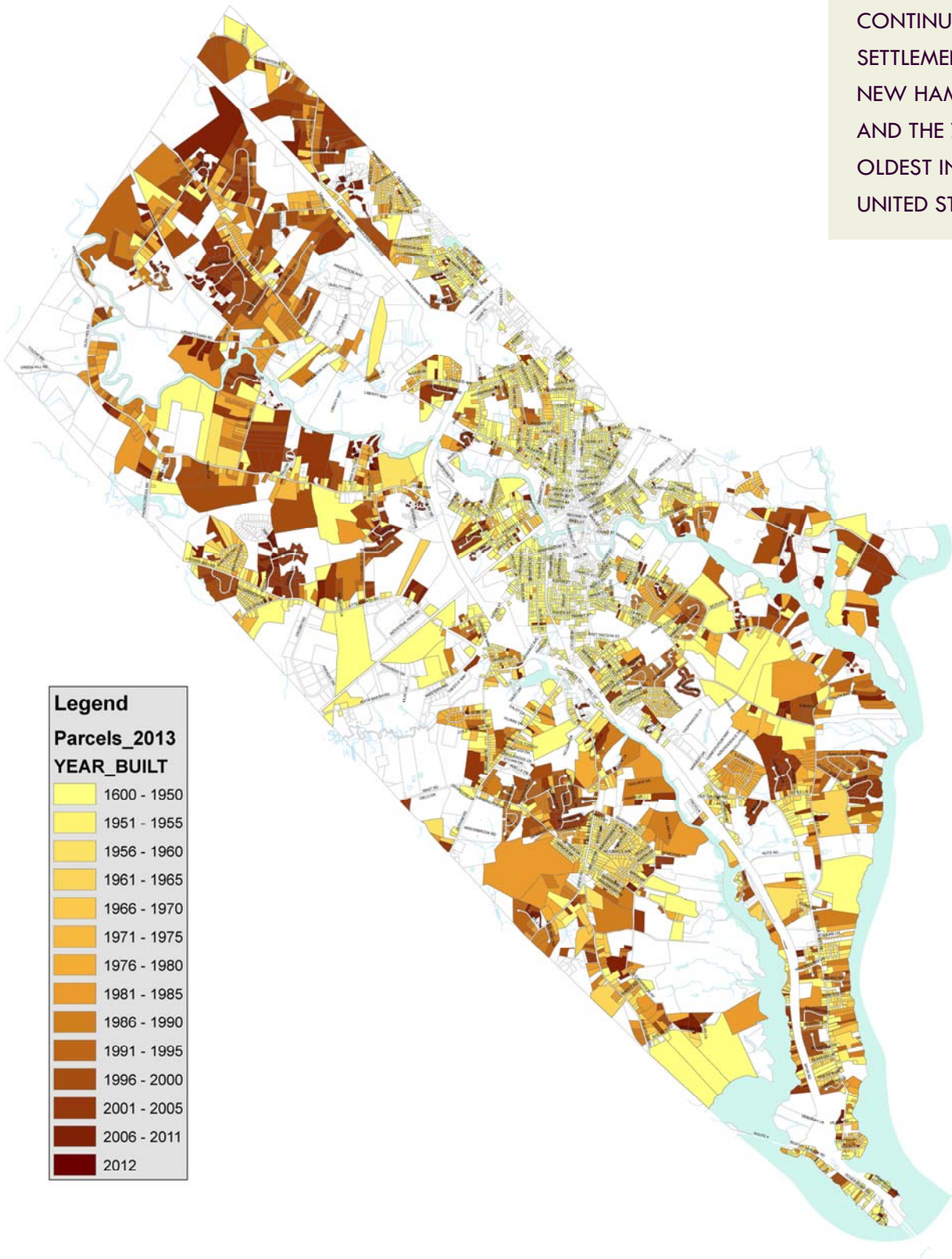
Detailing Dover, Demographically

Dover's Land Usage



Dover's Residential Development Over Time

“DOVER IS THE OLDEST PERMANENT/CONTINUOUS SETTLEMENT IN NEW HAMPSHIRE AND THE 7TH OLDEST IN THE UNITED STATES”



Legend	
Parcels_2013	
YEAR_BUILT	
1600 - 1950	Lightest yellow
1951 - 1955	Light yellow
1956 - 1960	Yellow-orange
1961 - 1965	Orange
1966 - 1970	Dark orange
1971 - 1975	Orange-brown
1976 - 1980	Brown
1981 - 1985	Dark brown
1986 - 1990	Very dark brown
1991 - 1995	Dark brown
1996 - 2000	Dark brown
2001 - 2005	Dark brown
2006 - 2011	Dark brown
2012	Darkest brown



Dover: First in New Hampshire, First With You

A COMMUNITY PROFILE

Prepared By:

Department of Planning and
Community Development
Municipal Building
288 Central Avenue
Dover, NH 03820

Phone: 603-516-6008
c.parker@dover.nh.gov
www.dover.nh.gov

Dover's Strategic Priorities: Dover's Focus Areas:

- Obtain a financially-and environmentally- reasonable permit for the wastewater treatment plant
- Increase non-property-tax revenue sources and control expenses
- Enhance communication to all stakeholders to engender public trust
- Foster Economic Development
- Public Education
- Economic Development
- Public Safety
- Public Infrastructure
- Fiscal Stewardship



Dover's Core Values:

- Customer-Focused Service – We engage our customers, with a focus on listening to and supporting their needs, anticipating and delivering high quality services and ensuring their satisfaction.
- Integrity – We conduct ourselves at all times in a manner that is ethical, legal and professional, with the highest degree of honesty, respect and fairness.
- Innovation – We develop creative solutions and share leading practices that enhance the value of services provided for our customers.
- Accountability – We promote openness and transparency in our operations ensuring that we are accountable for our actions at all times.
- Stewardship – We serve as trusted stewards of the public's financial, environmental, social and physical resources always seeking to responsibly utilize, conserve and sustain for current and future generations.

Dover Has:

- 30,168 People
- 28.87 square miles of land
- 50 miles of river frontage
- An average elevation of 80'
- 6 Wards
- Avg # of residents per ward: 5,000
- Over 900 fire hydrants
- Over 130 miles of public streets
- Over 70 acres of parkland
- Three elementary schools, one middle school, one high school
- Services: Full emergency services (police, fire and ambulance); city water and sewer; public and private solid waste disposal; a recycling program; electricity and natural gas through utilities.

