

ROADWAY CONSTRUCTION PLANS

CITY OF SOMERSWORTH COMMERCIAL DRIVE

SOMERSWORTH, NEW HAMPSHIRE

LIST OF PLANS

- T-1 - TITLE SHEET
- T-2 - OVERALL PLAN
- C-1 - CONSTRUCTION PLAN - COMMERCIAL DRIVE
- C-2 - CONSTRUCTION PLAN - COMMERCIAL DRIVE
- C-3 - CONSTRUCTION PROFILE - COMMERCIAL DRIVE
- C-4 - CONSTRUCTION DETAILS
- XS-1 - CROSS SECTIONS - STA 0+00 - STA 5+00
- XS-2 - CROSS SECTIONS - STA 5+50 - STA 10+50
- XS-3 - CROSS SECTIONS - STA 11+00 - STA 16+00
- XS-4 - CROSS SECTIONS - STA 16+50 - STA 17+39

PREPARED FOR

THE CITY OF SOMERSWORTH

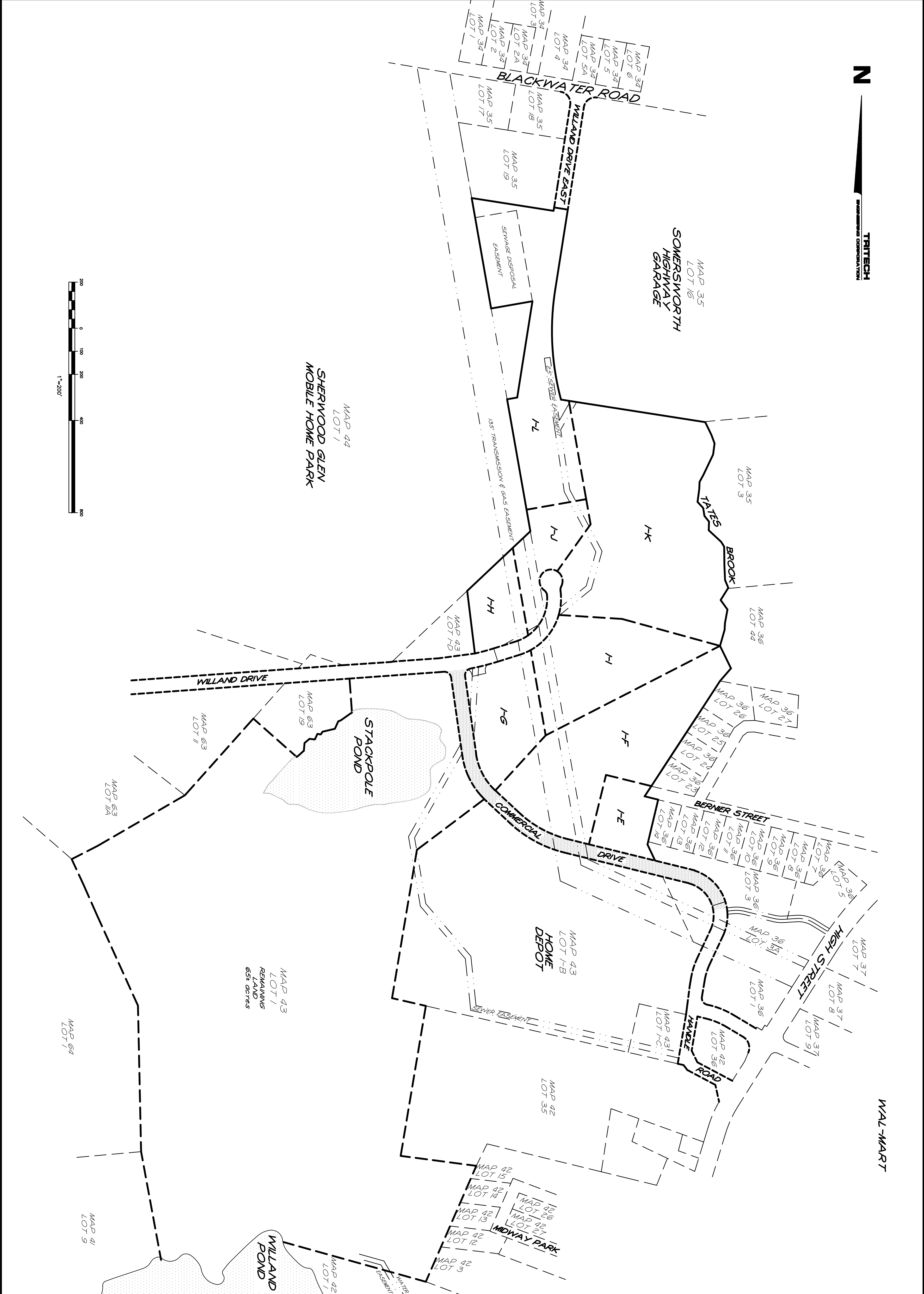
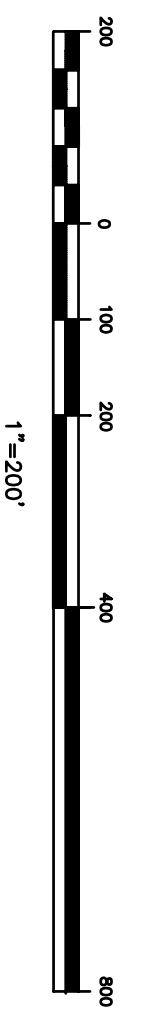
ONE GOVERNMENT WAY
SOMERSWORTH, NEW HAMPSHIRE 03878

PREPARED BY

TRITECH

ENGINEERING CORPORATION

SHEET NO.	TITLE SHEET		TRITECH ENGINEERING CORPORATION 755 CENTRAL AVENUE DOVER, NEW HAMPSHIRE 03820 TELEPHONE 603 742 8107 FAX 603 742 3830																
T-1	THE CITY OF SOMERSWORTH COMMERCIAL DRIVE HIGH STREET & WILLAND DRIVE SOMERSWORTH, NEW HAMPSHIRE MARCH 12, 2004	JOB No.			REVISIONS <table border="1"> <thead> <tr> <th>DATE:</th> <th>DESCRIPTION:</th> </tr> </thead> <tbody> <tr> <td>08/21/08</td> <td>ADDED UTILITIES</td> </tr> <tr> <td>08/29/08</td> <td>REV. PER ENGINEERING COMMENTS</td> </tr> <tr> <td>09/10/08</td> <td>REV. PER ENGINEERING COMMENTS</td> </tr> <tr> <td> </td> <td> </td> </tr> <tr> <td> </td> <td> </td> </tr> <tr> <td> </td> <td> </td> </tr> <tr> <td> </td> <td> </td> </tr> </tbody> </table>	DATE:	DESCRIPTION:	08/21/08	ADDED UTILITIES	08/29/08	REV. PER ENGINEERING COMMENTS	09/10/08	REV. PER ENGINEERING COMMENTS						
DATE:	DESCRIPTION:																		
08/21/08	ADDED UTILITIES																		
08/29/08	REV. PER ENGINEERING COMMENTS																		
09/10/08	REV. PER ENGINEERING COMMENTS																		

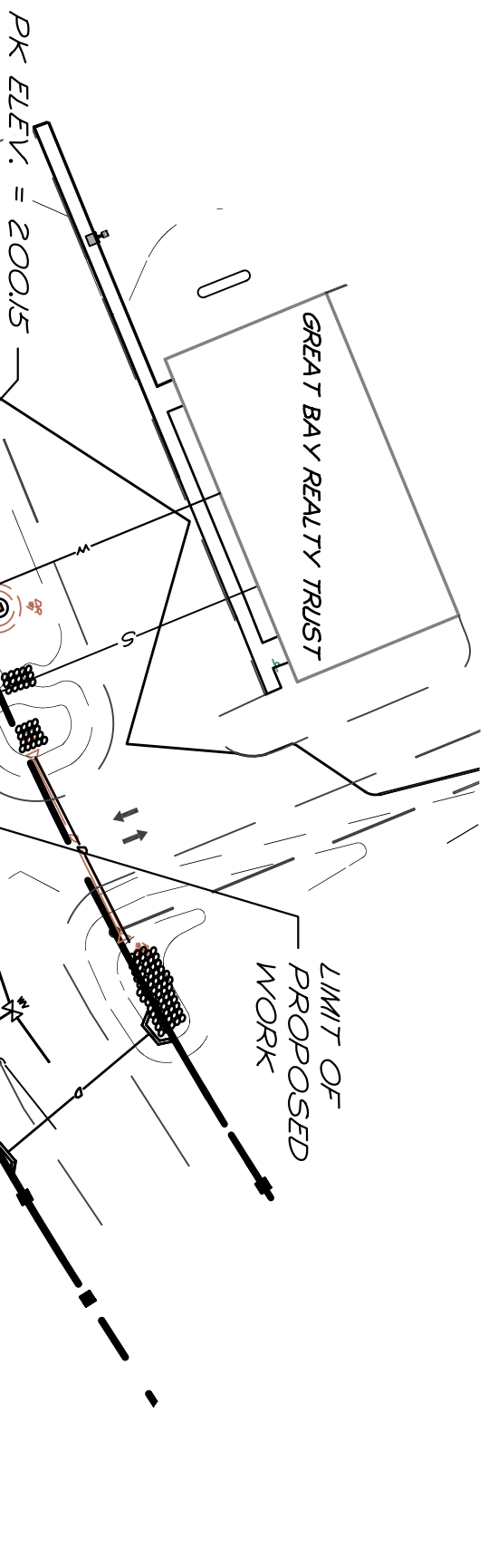


SHEET NO.
T-2

OVERALL PLAN
**THE CITY OF SOMERSWORTH
COMMERCIAL DRIVE**
HIGH STREET & WILLAND DRIVE
SOMERSWORTH, NEW HAMPSHIRE
MARCH 12, 2004 JOB No. 0410

REVISIONS	
DATE:	DESCRIPTION:
08/21/08	ADDED UTILITIES

TRITECH
ENGINEERING CORPORATION
755 CENTRAL AVENUE
DOVER, NEW HAMPSHIRE 03820
TELEPHONE 603 742 8107
FAX 603 742 3830



S-1 SEWER NOTES

- EXISTING SEWER - ALL INFORMATION ON AND LOCATION OF EXISTING UTILITIES ARE APPROXIMATE AND BASED ON FIELD INFORMATION AND AVAILABLE PLANS. EXACT LOCATIONS AND DEPTHS TO BE VERIFIED BY THE CONTRACTOR PRIOR TO CONSTRUCTION. MAINTAIN CONTINUOUS SEWER FLOW DURING THE CONSTRUCTION.
- INSTALL 800 - 4" SDR35 PVC CAPPED SEWER SERVICE FORCE MAIN FROM LOT 1-E TO SMH C065. INV. = 190.60. MARK END OF SEWER SERVICE WITH PAINTED 4" PVC EXTENDING A MINIMUM OF 2' ABOVE GROUND. CORE AND BOOT EXISTING SEWER MANHOLE.
- INSTALL 4" - 4" SDR35 PVC CAPPED SEWER SERVICE LOT 1-F TO PROPOSED FORCE MAIN. MARK END OF SEWER SERVICE WITH PAINTED 4" PVC EXTENDING A MINIMUM OF 2' ABOVE GRADE.
- INSTALL SEWER CLEANOUT AT STA. 6+50. PER DETAIL 2 SHEET C-2.
- INSULATE EXISTING SEWER MAIN WITH 2 LAYERS OF 2" x 2" x 2" RIGID FOAM BOARD INSULATION WHERE COVER IS LESS THAN 6".
- INSTALL AIR RELEASE VALVE IN FORCE MAIN AT HIGH POINT STA. 7+50+ PER DETAIL 3, SHEET C-2.

C-1 CONSTRUCTION NOTES

- THE CONTRACTOR IS REQUIRED UNDER NEW HAMPSHIRE LAW TO CONTACT "DIG SAFE" AT 1-888-344-7233, 72 HOURS PRIOR TO THE START OF CONSTRUCTION. THE CONTRACTOR SHALL MAINTAIN THE "DIG SAFE" LOCATIONS THROUGH OUT THE DURATION OF THE PROJECT.
- THE CONTRACTOR SHALL BEAR THE COST TO REPAIR ANY UTILITIES DAMAGED DURING THE COURSE OF THE WORK.
- ALL MATERIALS AND CONSTRUCTION SHALL CONFORM WITH THE APPLICABLE CITY AND STATE SPECIFICATIONS.
- EXISTING UTILITIES - ALL INFORMATION ON AND LOCATION OF EXISTING UTILITIES ARE APPROXIMATE AND BASED ON FIELD INFORMATION AND AVAILABLE PLANS. EXACT LOCATIONS AND DEPTHS TO BE VERIFIED BY THE CONTRACTOR PRIOR TO CONSTRUCTION. MAINTAIN CONTINUOUS SEWER FLOW DURING THE CONSTRUCTION.
- CONSTRUCTION SHALL CONFORM WITH THE STATE OF NEW HAMPSHIRE DEPARTMENT OF TRANSPORTATION AND PUBLIC SAFETY (DPS) SPECIFICATIONS FOR ROADWAY CONSTRUCTION. HEREINAFTER REFERRED TO AS THE "STANDARD SPECIFICATIONS" AND ALSO WITH THE "CITY OF SOMERSWORTH SPECIFICATIONS".
- A PRE-CONSTRUCTION CONFERENCE WITH THE DEVELOPER, THE EARTHWORK CONTRACTOR, THE ENGINEERING CONTRACTOR AND THE CITY ENGINEER SHALL OCCUR PRIOR TO THE START OF CONSTRUCTION.
- ALL BACKFILL IN TRENCHES AND FILL FOR ROADBEDS SHALL BE THOROUGHLY COMPACTED TO 95% OF OPTIMUM DENSITY.
- THERE SHALL BE NO ROADWAY CONSTRUCTION ON WET OR FROZEN SUBGRADE.
- ALL CONSTRUCTION SHALL BE IN ACCORDANCE WITH THE CITY ENGINEER'S SPECIFICATIONS FOR UTILITIES, ETC.) ALL REMAINING LAND AND VEGETATION SHALL REMAIN AS IS.
- INSTALL STOP SIGN AND STOP BAR WHERE SHOWN. INSTALL STREET NAME SIGN ABOVE STOP SIGN.
- REMOVE STOP SIGN WHERE REQUIRED.
- INSTALL SLIT FENCE WHERE LIMITS OF WORK ADJUT WETLANDS. PER DETAIL 3, SHEET C-4.
- SAW-CUT EXISTING PAVEMENT AS SHOWN.
- CENTRERLINE LAYOUT TO BE PERFORMED BY TRITECH ENGINEERING CORPORATION.
- STATE OF NEW HAMPSHIRE DEPARTMENT OF ENVIRONMENTAL SERVICES WETLANDS AND NON-SITE SPECIFIC PERMIT 2004-00764

D-1 DRAINAGE NOTES

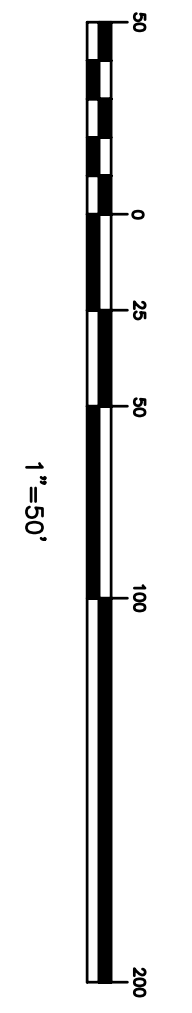
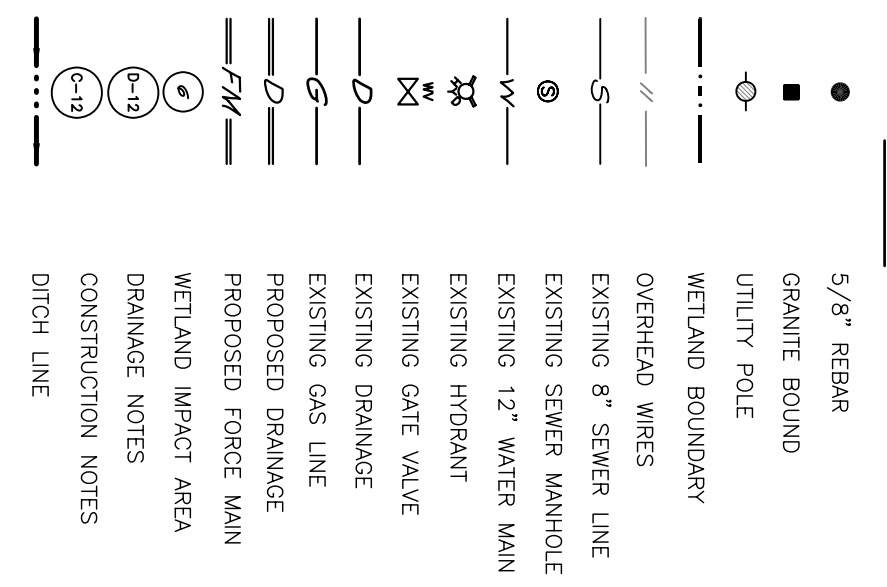
- CONSTRUCT 3' SWALE. LENGTH = 200'±. SEE DETAIL 11.
- CONSTRUCT 3' SWALE. LENGTH = 250'±. SEE DETAIL 11.
- CONSTRUCT 3' SWALE. LENGTH = 132'±. SEE DETAIL 11.
- CONSTRUCT 3' SWALE. LENGTH = 27'±. SEE DETAIL 11.
- INSTALL 554 FEET OF 24" RCP CLASS III PIPE FROM FE#1 TO FE#2.
- INSTALL 554 FEET OF 24" RCP CLASS III PIPE FROM FE#3 TO FE#4.
- INV. = 191.60'. INVOID = 191.00'. S = 0.011 FT/FT.
- CONSTRUCT 3' SWALE. LENGTH = 130'±. SEE DETAIL 11.
- CONSTRUCT 3' SWALE. LENGTH = 84'±. SEE DETAIL 11.
- CONSTRUCT 3' SWALE. LENGTH = 208'±. SEE DETAIL 11.
- CONSTRUCT 3' SWALE. LENGTH = 329'±. SEE DETAIL 11.
- INSTALL 194.20' INVOID = 193.00'. S = 0.023 FT/FT.
- INSTALL 744 FEET OF 24" RCP CLASS III PIPE FROM FE#7 TO FE#8.
- CONSTRUCT 3' SWALE. LENGTH = 193.00'. S = 0.023 FT/FT.
- CONSTRUCT 3' SWALE. LENGTH = 452'±. SEE DETAIL 11.
- INSTALL 744 FEET OF 24" RCP CLASS III PIPE FROM FE#9 TO FE#10.
- INSTALL 744 FEET OF 24" RCP CLASS III PIPE FROM FE#11 TO FE#12.
- INSTALL 744 FEET OF 24" RCP CLASS III PIPE FROM FE#13 TO FE#14.
- INSTALL 744 FEET OF 24" RCP CLASS III PIPE FROM FE#15 TO FE#16.
- INSTALL 744 FEET OF 24" RCP CLASS III PIPE FROM FE#17 TO FE#18.
- INSTALL 744 FEET OF 24" RCP CLASS III PIPE FROM FE#19 TO FE#20.
- INSTALL 744 FEET OF 24" RCP CLASS III PIPE FROM FE#21 TO FE#22.
- INSTALL 744 FEET OF 24" RCP CLASS III PIPE FROM FE#23 TO FE#24.
- INSTALL 744 FEET OF 24" RCP CLASS III PIPE FROM FE#25 TO FE#26.
- INSTALL 744 FEET OF 24" RCP CLASS III PIPE FROM FE#27 TO FE#28.
- INSTALL 744 FEET OF 24" RCP CLASS III PIPE FROM FE#29 TO FE#30.
- INSTALL 744 FEET OF 24" RCP CLASS III PIPE FROM FE#31 TO FE#32.
- INSTALL 744 FEET OF 24" RCP CLASS III PIPE FROM FE#33 TO FE#34.
- INSTALL 744 FEET OF 24" RCP CLASS III PIPE FROM FE#35 TO FE#36.
- INSTALL 744 FEET OF 24" RCP CLASS III PIPE FROM FE#37 TO FE#38.
- INSTALL 744 FEET OF 24" RCP CLASS III PIPE FROM FE#39 TO FE#40.
- INSTALL 744 FEET OF 24" RCP CLASS III PIPE FROM FE#41 TO FE#42.
- INSTALL 744 FEET OF 24" RCP CLASS III PIPE FROM FE#43 TO FE#44.
- INSTALL 744 FEET OF 24" RCP CLASS III PIPE FROM FE#45 TO FE#46.
- INSTALL 744 FEET OF 24" RCP CLASS III PIPE FROM FE#47 TO FE#48.
- INSTALL 744 FEET OF 24" RCP CLASS III PIPE FROM FE#49 TO FE#50.
- INSTALL 744 FEET OF 24" RCP CLASS III PIPE FROM FE#51 TO FE#52.
- INSTALL 744 FEET OF 24" RCP CLASS III PIPE FROM FE#53 TO FE#54.
- INSTALL 744 FEET OF 24" RCP CLASS III PIPE FROM FE#55 TO FE#56.
- INSTALL 744 FEET OF 24" RCP CLASS III PIPE FROM FE#57 TO FE#58.
- INSTALL 744 FEET OF 24" RCP CLASS III PIPE FROM FE#59 TO FE#60.
- INSTALL 744 FEET OF 24" RCP CLASS III PIPE FROM FE#61 TO FE#62.
- INSTALL 744 FEET OF 24" RCP CLASS III PIPE FROM FE#63 TO FE#64.
- INSTALL 744 FEET OF 24" RCP CLASS III PIPE FROM FE#65 TO FE#66.
- INSTALL 744 FEET OF 24" RCP CLASS III PIPE FROM FE#67 TO FE#68.
- INSTALL 744 FEET OF 24" RCP CLASS III PIPE FROM FE#69 TO FE#70.
- INSTALL 744 FEET OF 24" RCP CLASS III PIPE FROM FE#71 TO FE#72.
- INSTALL 744 FEET OF 24" RCP CLASS III PIPE FROM FE#73 TO FE#74.
- INSTALL 744 FEET OF 24" RCP CLASS III PIPE FROM FE#75 TO FE#76.
- INSTALL 744 FEET OF 24" RCP CLASS III PIPE FROM FE#77 TO FE#78.
- INSTALL 744 FEET OF 24" RCP CLASS III PIPE FROM FE#79 TO FE#80.
- INSTALL 744 FEET OF 24" RCP CLASS III PIPE FROM FE#81 TO FE#82.
- INSTALL 744 FEET OF 24" RCP CLASS III PIPE FROM FE#83 TO FE#84.
- INSTALL 744 FEET OF 24" RCP CLASS III PIPE FROM FE#85 TO FE#86.
- INSTALL 744 FEET OF 24" RCP CLASS III PIPE FROM FE#87 TO FE#88.
- INSTALL 744 FEET OF 24" RCP CLASS III PIPE FROM FE#89 TO FE#90.
- INSTALL 744 FEET OF 24" RCP CLASS III PIPE FROM FE#91 TO FE#92.
- INSTALL 744 FEET OF 24" RCP CLASS III PIPE FROM FE#93 TO FE#94.
- INSTALL 744 FEET OF 24" RCP CLASS III PIPE FROM FE#95 TO FE#96.
- INSTALL 744 FEET OF 24" RCP CLASS III PIPE FROM FE#97 TO FE#98.
- INSTALL 744 FEET OF 24" RCP CLASS III PIPE FROM FE#99 TO FE#100.

W-1 WATER NOTES:

- CONNECT TO EXISTING 12" WATER MAIN WITH 12" x 8" REDUCER.
- INSTALL 420' OF 8" CDJ WATER MAIN.
- INSTALL 8" GATE VALVE.
- INSTALL 8" GATE VALVE.
- INSTALL 32' - 6" CDJ WATER MAIN.
- INSTALL CONCRETE THRUST BLOCKS WHERE SHOWN.
- INSTALL 8" WET PIP WITH 8" GATE VALVE. INSTALL 20' - 8" CDJ WATER LINE.

WETLAND IMPACT AREAS		
AREA DESCRIPTION	AREA (SF)	WETLAND CLASSIFICATION
1.	144	POONED - PUBH
2.	1471	POOTE - FORESTED SWAMP
3.	234	PSSIE - SHRUB SWAMP
4.	317	PSSIE - SHRUB SWAMP
5.	143	PFOTE - FORESTED SWAMP
6.	361	PFOTE - FORESTED SWAMP
7.	277	PSSIC - SHRUB SWAMP
TOTAL	2,947 SF	

LEGEND



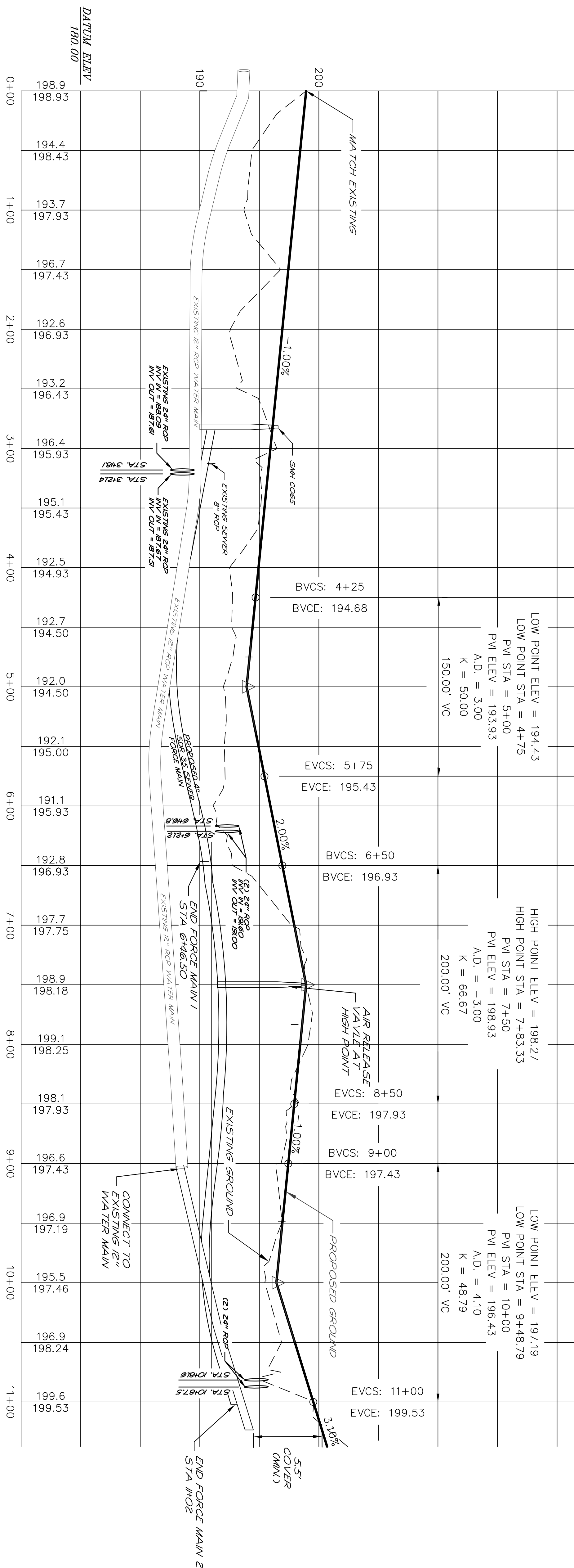
SHEET NO.
C-1

CONSTRUCTION PLAN
**THE CITY OF SOMERSWORTH
COMMERCIAL DRIVE**
HIGH STREET & WILLAND DRIVE
SOMERSWORTH, NEW HAMPSHIRE
MARCH 12, 2004 JOB No. 04110
SCALE: 1" = 50'

REVISIONS	
DATE:	DESCRIPTION:
08/21/08	ADDED UTILITIES
08/29/08	REV. PER ENGINEERING COMMENTS
09/10/08	REV. PER ENGINEERING COMMENTS

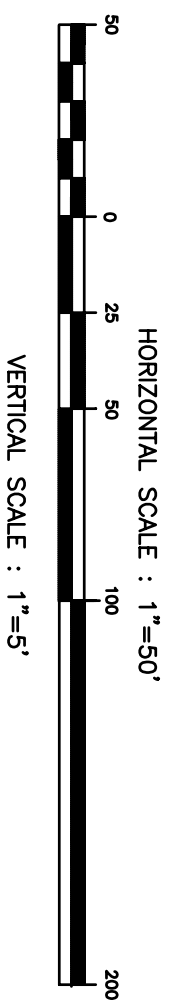
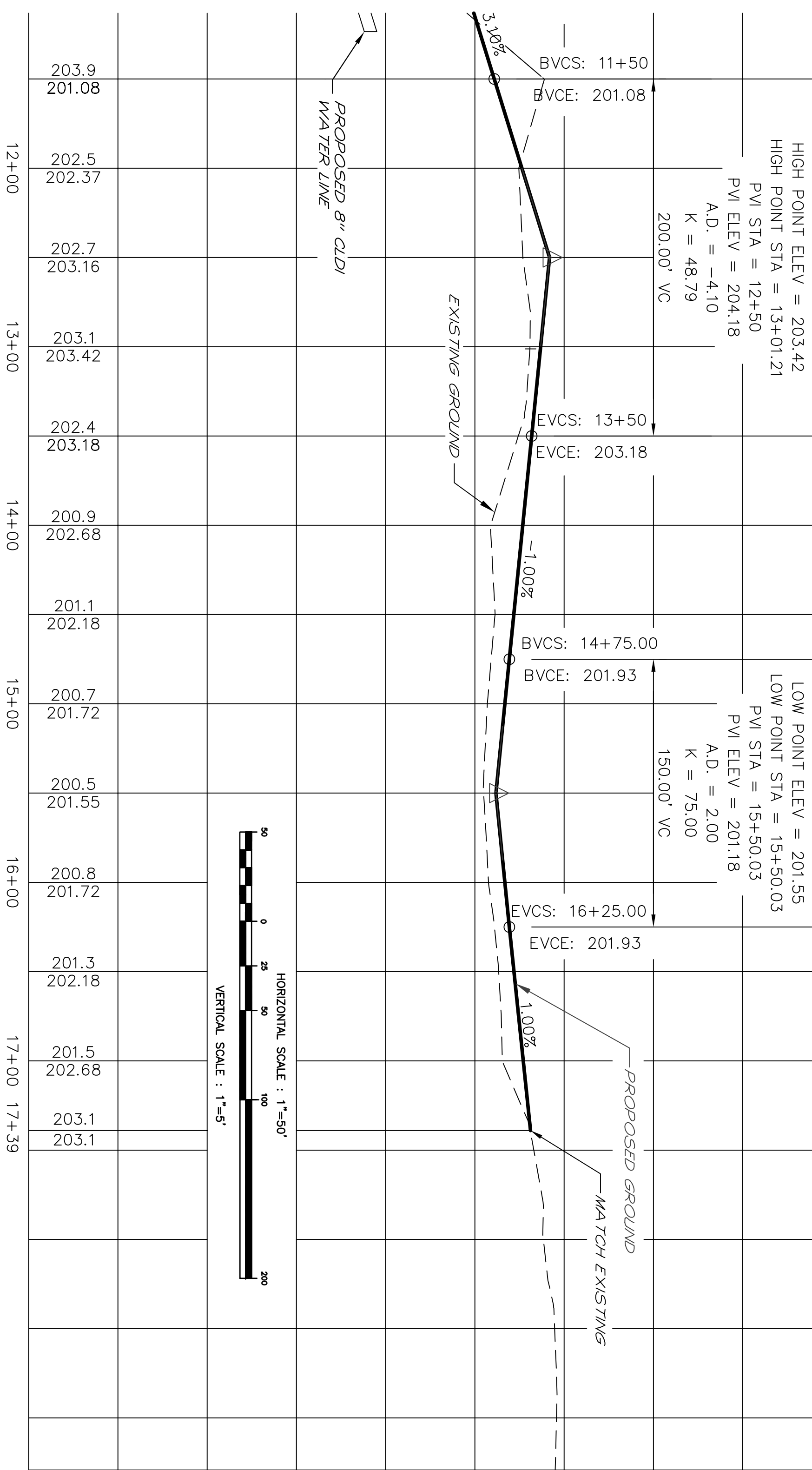
TRITECH
ENGINEERING CORPORATION

755 CENTRAL AVENUE
DOVER, NEW HAMPSHIRE 03820
TELEPHONE 603 742 8107
FAX 603 742 3830



FLARED END SECTION SCHEDULE

FE #	INV. EL.
1	191.60
2	191.00
3	191.60
4	191.00
5	194.20
6	193.00
7	194.20
8	193.00



SHEET NO.

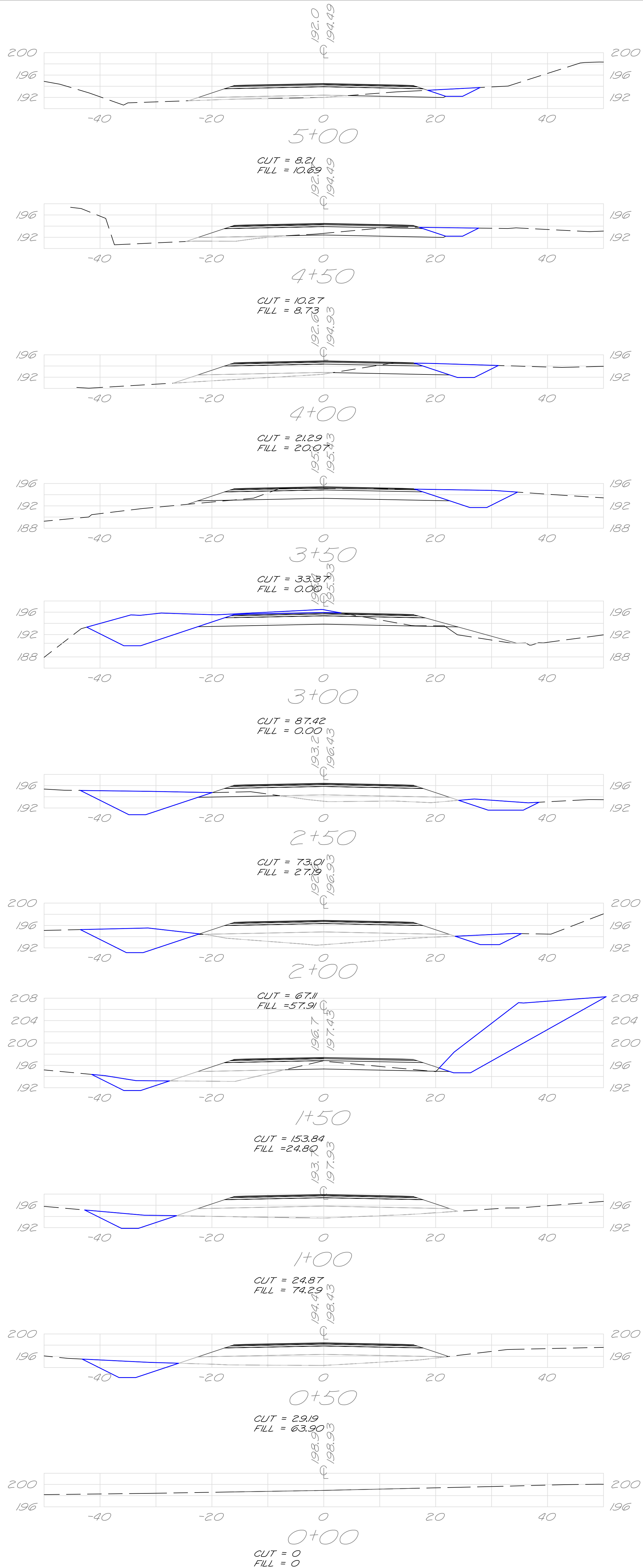
C-3

CONSTRUCTION PROFILE
THE CITY OF SOMERSWORTH
COMMERCIAL DRIVE
HIGH STREET & WILLAND DRIVE
SOMERSWORTH, NEW HAMPSHIRE
MARCH 12, 2004 JOB No. 04110
SCALE: 1" = 50'

REVISIONS	
DATE:	DESCRIPTION:
08/21/08	ADDED UTILITIES
09/10/08	REV. PER ENGINEERING COMMENTS

TRITECH
ENGINEERING CORPORATION

755 CENTRAL AVENUE
DOVER, NEW HAMPSHIRE 03820
TELEPHONE 603 742 8107
FAX 603 742 3830



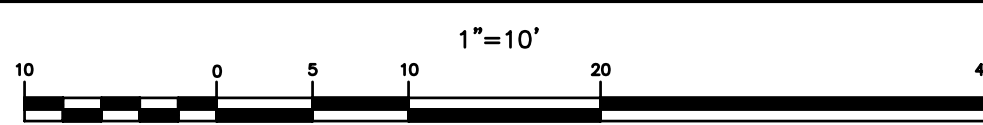
SHEET NO.

XS-1

CROSS SECTIONS

**THE CITY OF SOMERSWORTH
COMMERCIAL DRIVE**

HIGH STREET & WILLAND DRIVE
SOMERSWORTH, NEW HAMPSHIRE
MARCH 12, 2004 JOB No. 0410
SCALE: 1" = 10'



REVISIONS

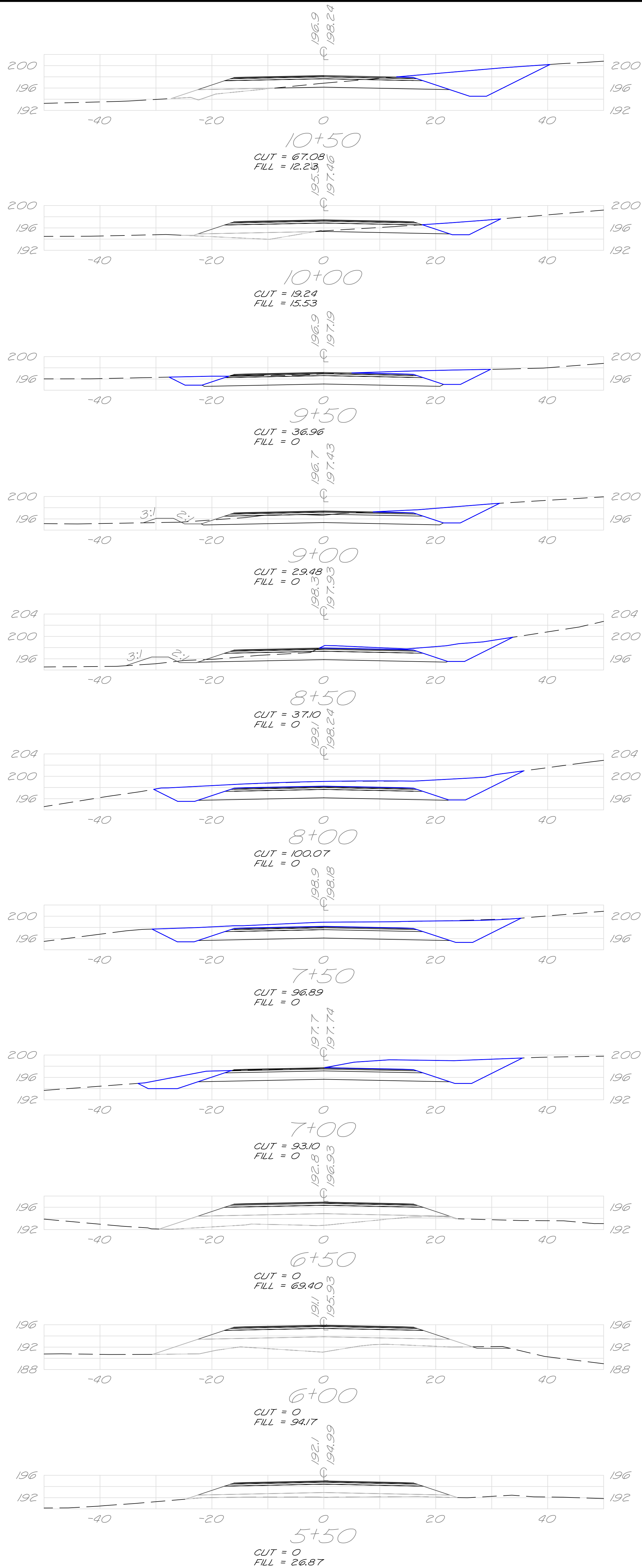
DATE: DESCRIPTION:

08/21/08 ADDED UTILITIES

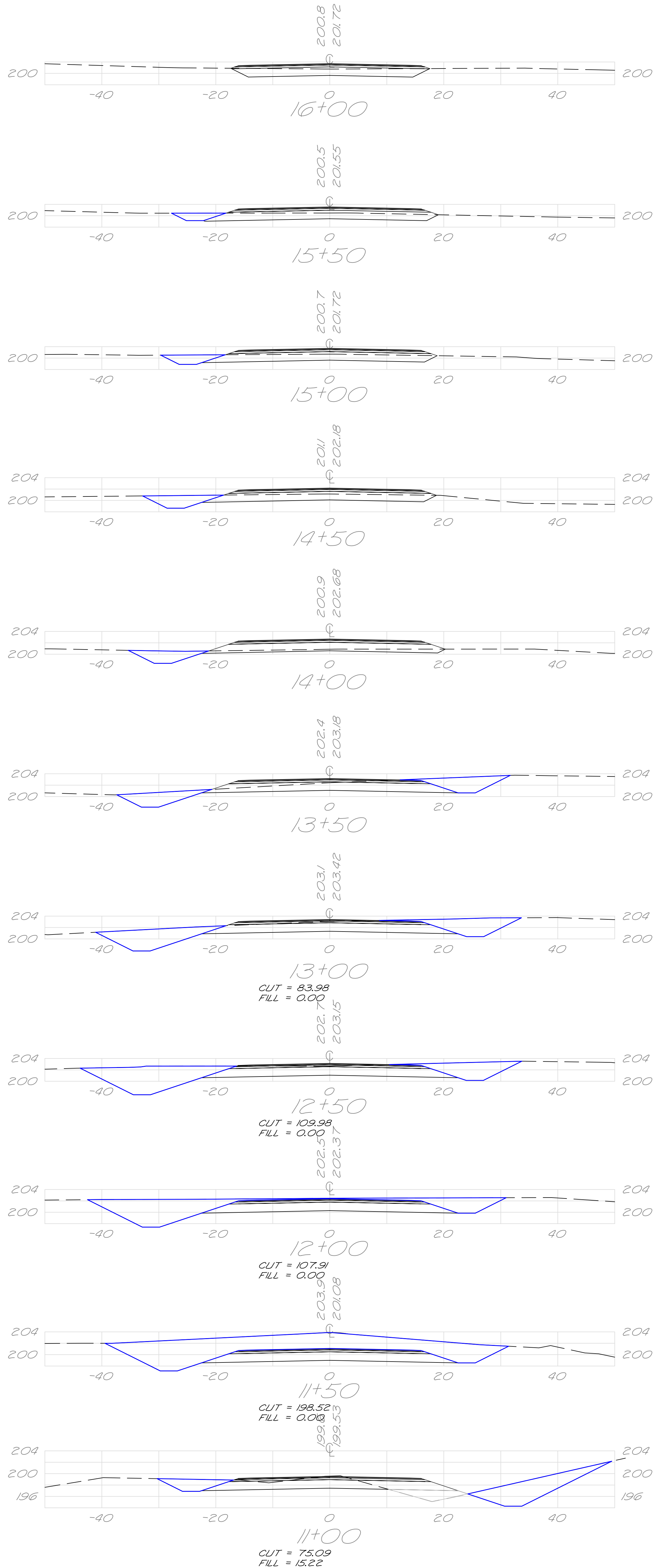
TRITECH

ENGINEERING CORPORATION

755 CENTRAL AVENUE
DOVER, NEW HAMPSHIRE 03820
TELEPHONE 603 742 8107
FAX 603 742 3830



SHEET NO.	CROSS SECTIONS		TRITECH ENGINEERING CORPORATION
XS-2	THE CITY OF SOMERSWORTH COMMERCIAL DRIVE HIGH STREET & WILLAND DRIVE SOMERSWORTH, NEW HAMPSHIRE MARCH 12, 2004 JOB No. 0410 SCALE: 1" = 10'	REVISIONS DATE: DESCRIPTION: 08/21/08 ADDED UTILITIES	755 CENTRAL AVENUE DOVER, NEW HAMPSHIRE 03820 TELEPHONE 603 742 8107 FAX 603 742 3830



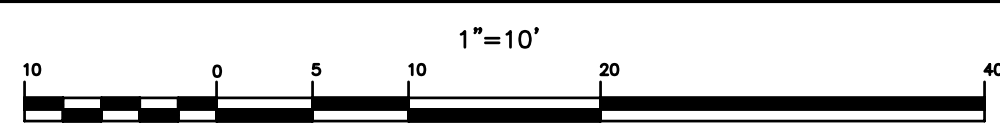
SHEET NO.

XS-3

CROSS SECTIONS

**THE CITY OF SOMERSWORTH
COMMERCIAL DRIVE**

HIGH STREET & WILLAND DRIVE
SOMERSWORTH, NEW HAMPSHIRE
MARCH 12, 2004 JOB No. 04110
SCALE: 1" = 10'



REVISIONS

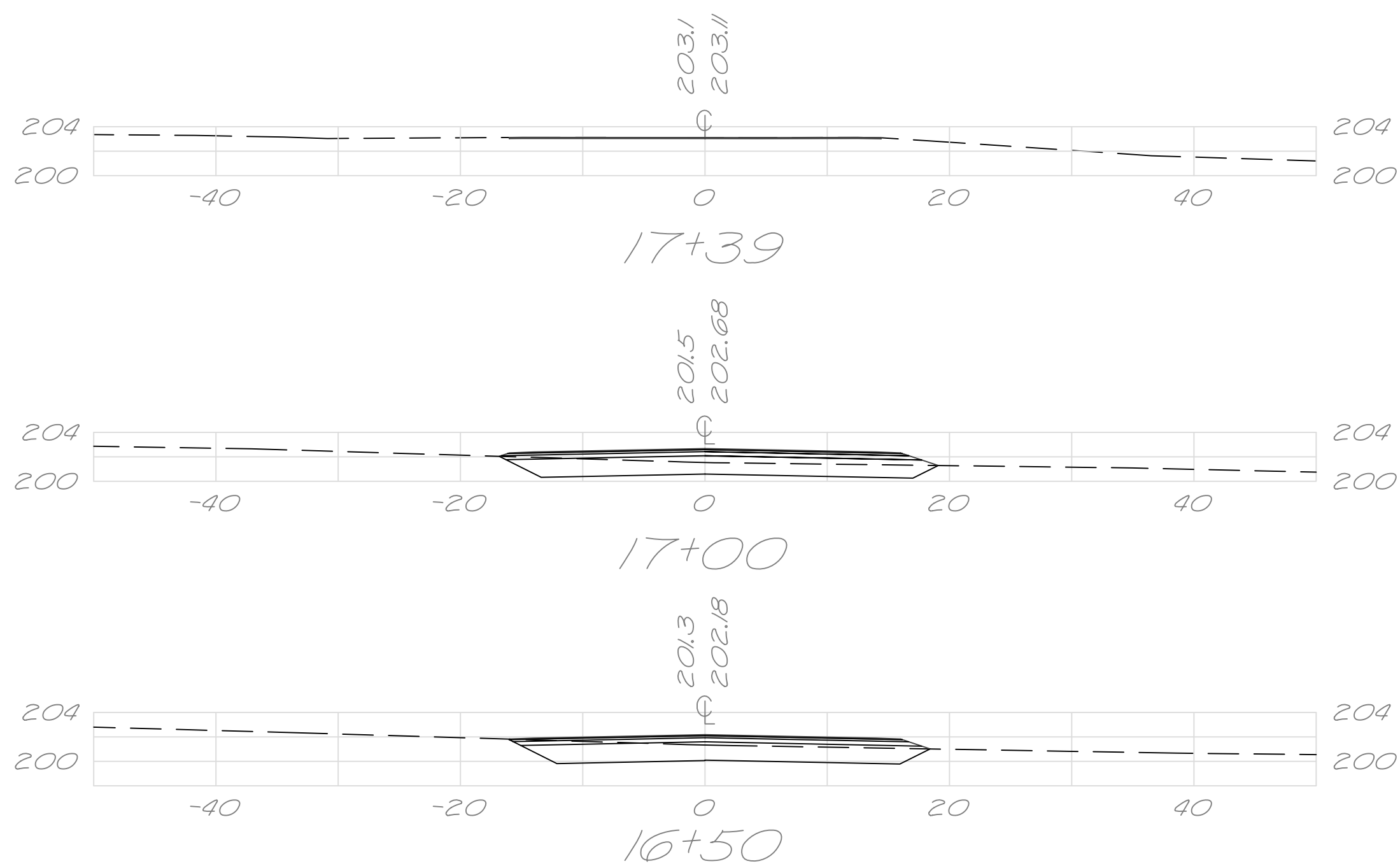
DATE: DESCRIPTION:

08/21/08 ADDED UTILITIES

TRITECH

ENGINEERING CORPORATION

755 CENTRAL AVENUE
DOVER, NEW HAMPSHIRE 03820
TELEPHONE 603 742 8107
FAX 603 742 3830



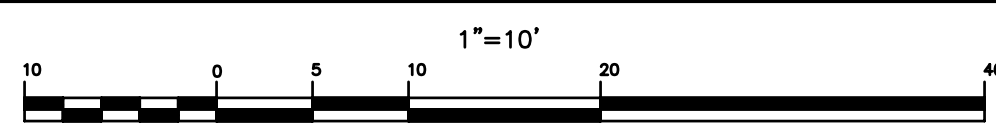
SHEET NO.

XS-4

CROSS SECTIONS

**THE CITY OF SOMERSWORTH
COMMERCIAL DRIVE**

HIGH STREET & WILLAND DRIVE
SOMERSWORTH, NEW HAMPSHIRE
MARCH 12, 2004 JOB No. 04110
SCALE: 1" = 10'



REVISIONS

DATE: DESCRIPTION:

08/21/08 ADDED UTILITIES

TRITECH

ENGINEERING CORPORATION

755 CENTRAL AVENUE
DOVER, NEW HAMPSHIRE 03820
TELEPHONE 603 742 8107
FAX 603 742 3830