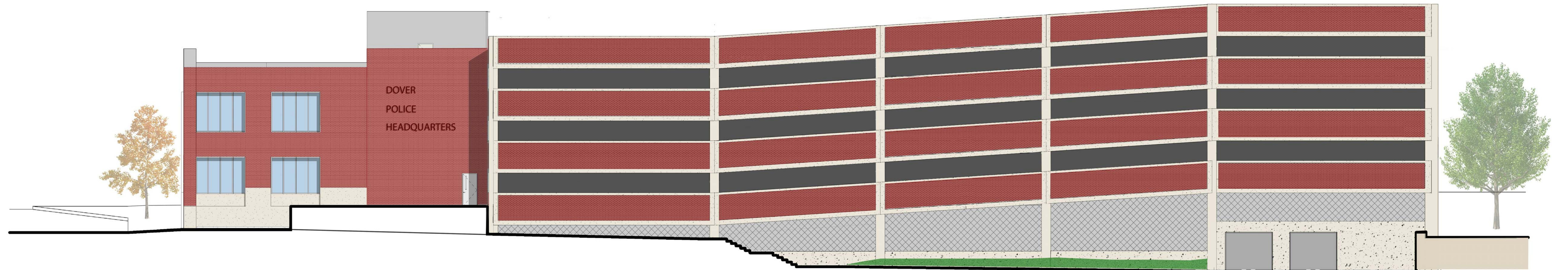




WEST ELEVATION



SOUTH ELEVATION

A

B

C

D

E

F

G

H

I

J

City of Dover

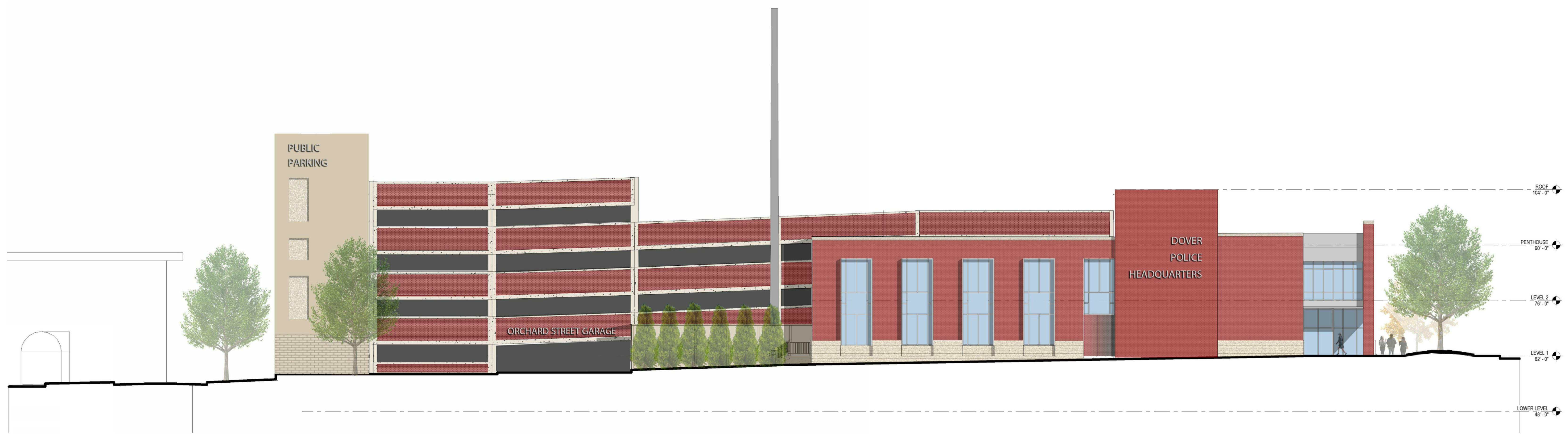
Dover Police Facility and Public Parking Garage

Orchard Street, Dover, NH, 03820

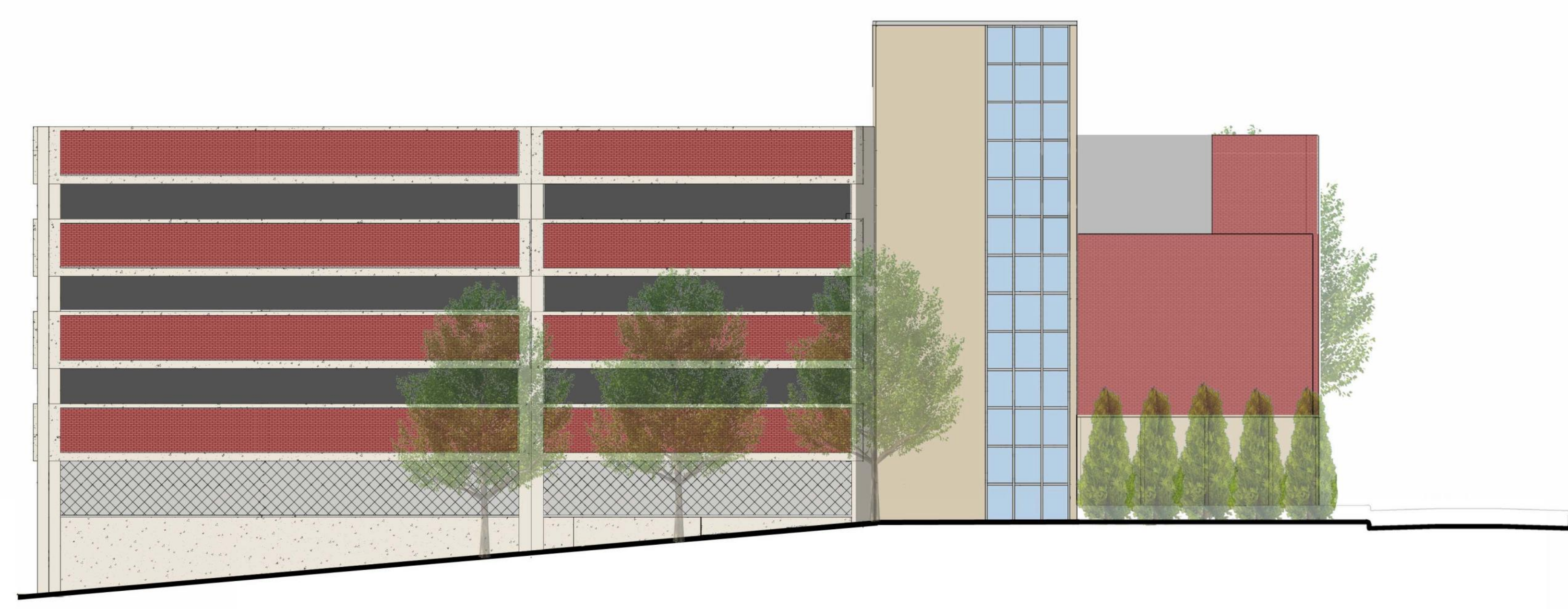
NO.	DESCRIPTION	DATE

N

CONTENT:	
PLANNING BOARD SUBMISSION - WEST & SOUTH ELEVATIONS	
DRAWN BY:	Author
PROJECT NO:	13-024-00
DATE:	06/25/2014
REVISED:	
SCALE:	
A-PB 1.2	
Project Phase	
PLANNING BOARD SUBMISSION	
<small>COPYRIGHT © 2014 BY LAVALLEE BRENSINGER PROFESSIONAL ASSOCIATION. ALL RIGHTS RESERVED. NO REPRODUCTION WITHOUT PERMISSION.</small>	



NORTH ELEVATION



EAST ELEVATION



ROOF
104'-0"

PENTHOUSE
90'-0"

LEVEL 2
78'-0"

LEVEL 1
62'-0"

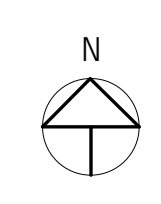
LOWER LEVEL
48'-0"

City of Dover

**Dover Police Facility
 and Public Parking
 Garage**

Orchard Street, Dover, NH, 03820

NO.	DESCRIPTION	DATE



CONTENT: PLANNING BOARD SUBMISSION - NORTH ELEVATIONS	
DRAWN BY:	Author
PROJECT NO:	13-024-00
DATE:	06/25/2014
REVISED:	
SCALE:	
A-PB 1.3	
Project Phase PLANNING BOARD SUBMISSION	
<small>COPYRIGHT © 2014 BY LAVALLEE BRENSINGER PROFESSIONAL ASSOCIATION. ALL RIGHTS RESERVED. NO REPRODUCTION WITHOUT PERMISSION.</small>	