

---

NEW POLICE FACILITY CONCEPT FOR THE CITY OF DOVER  
CITY COUNCIL WORKSHOP 11.20.2013

LAVALLEE|BRENSINGER ARCHITECTS | Architects Design Group

<b>SPATIAL NEEDS</b>		<b>Dover Police Department Headquarters</b>	
Current / Year	Year 2014	Year 2024	Year 2034
	26,067 SF	27,908 SF	31,169 SF

The proposed facility program for a new facility includes the following areas as noted:

Public Access Areas  
 Field Operations Division  
 Animal Control  
 Traffic Bureau  
 Communications Bureau  
 Parking Bureau  
 Property & Evidence / Crime Scene  
 Professional Standards Bureau

Records  
 Management Information Services  
 Community Outreach Bureau  
 Investigations  
 Legal Bureau  
 Office of the Chief / Administration  
 Facility Service Areas  
 Facility Support Areas

---

## SPACE NEEDS ASSESSMENT

LAVALLEE|BRENSINGER ARCHITECTS | Architects Design Group

## OBJECTIVE SITE SELECTION CRITERIA

1. APPROPRIATE SURROUNDING LAND USE
2. PROXIMITY TO GOVERNMENT FUNCTIONS
3. SITE SIZE & EASE OF EXPANSION
4. ZONING
5. ADVERSE SITE CONDITIONS
6. VEHICULAR, PEDESTRIAN, PUBLIC TRANSIT ACCESS
7. IMPACT ON DOWNTOWN DEVELOPMENT
8. PROXIMITY TO POTENTIAL HAZARDS
9. EASE OF ACQUISITION
10. ADEQUACY OF UTILITY INFRASTRUCTURE

---

### SITE SELECTION

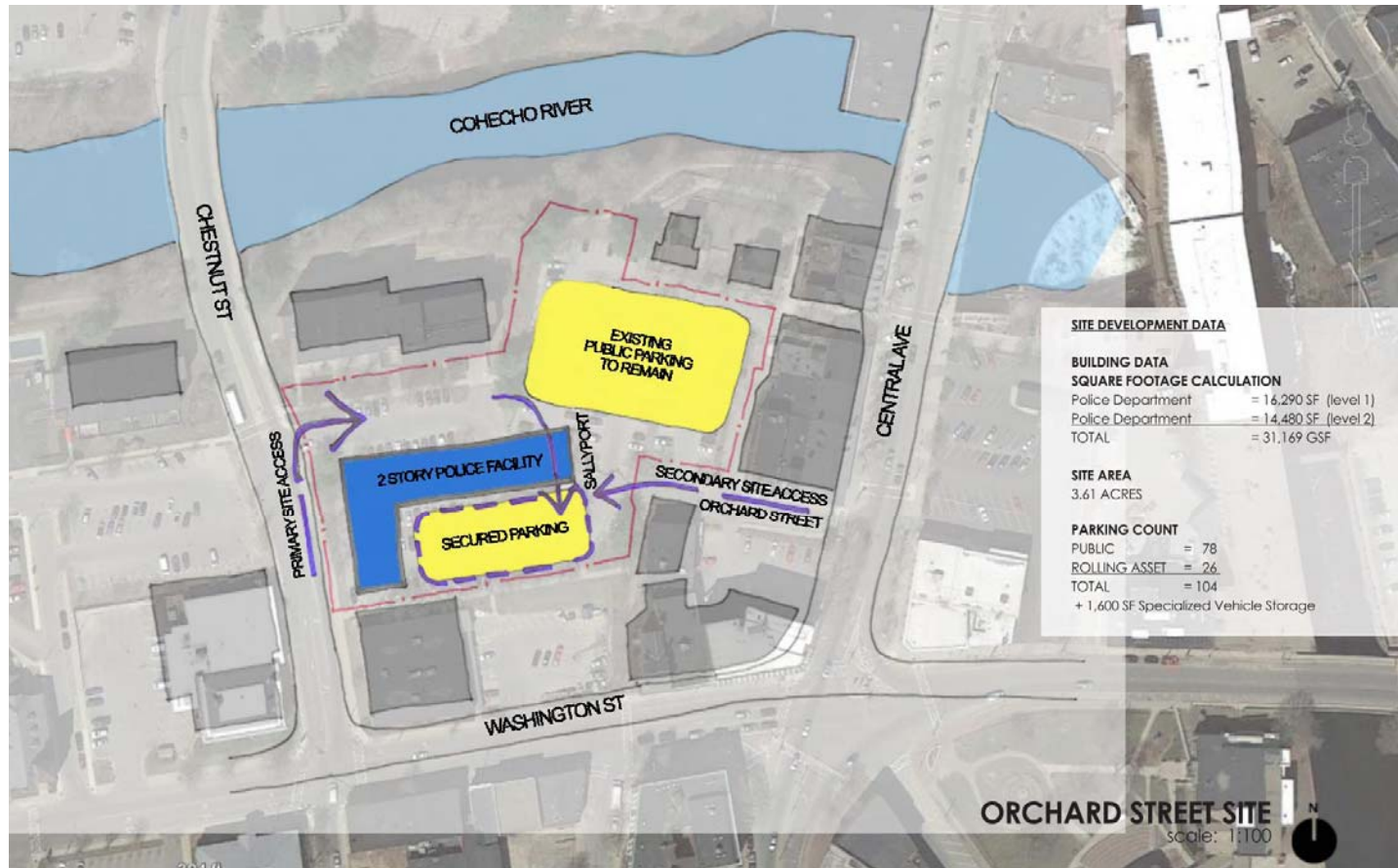
LAVALLEE|BRENSINGER ARCHITECTS | Architects Design Group

Property	23 Cataract Avenue	80 Rutland Street	181 Silver Street	Armory	Durham Road	Grimes Lot	Knox Marsh Road	Locust Street East	Locust Street West	Orchard Street	Robbins Auto	School Street	St. Charles Church
<b>Overall Score</b>	52	52	60	0	62	51	66	0	0	82	76	62	45

---

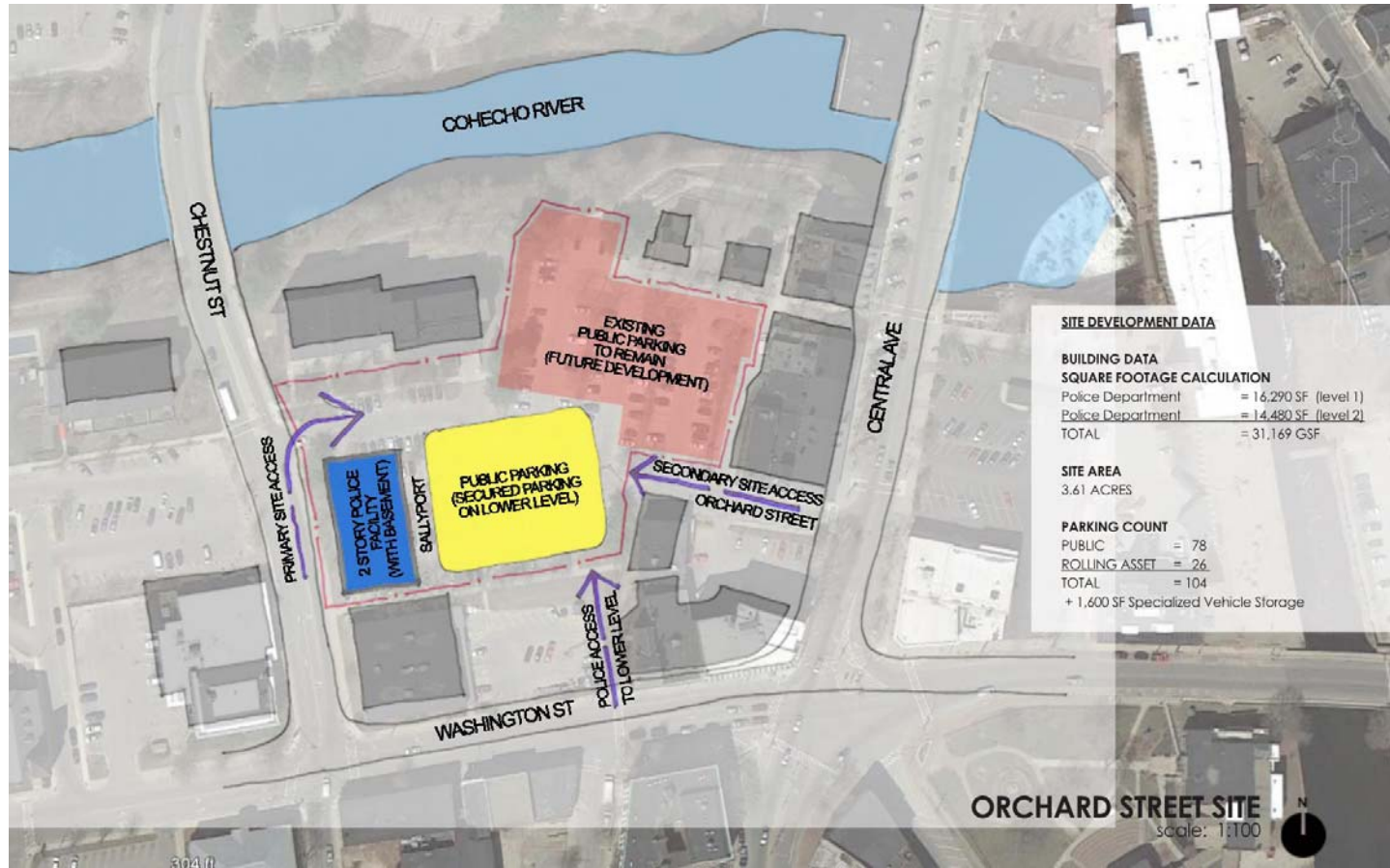
## SITE SELECTION

LAVALLEE|BRENSINGER ARCHITECTS | Architects Design Group



## SITE SELECTION

LAVALLEE|BRENSINGER ARCHITECTS | Architects Design Group



## SITE SELECTION

LAVALLEE | BRENSINGER ARCHITECTS | Architects Design Group

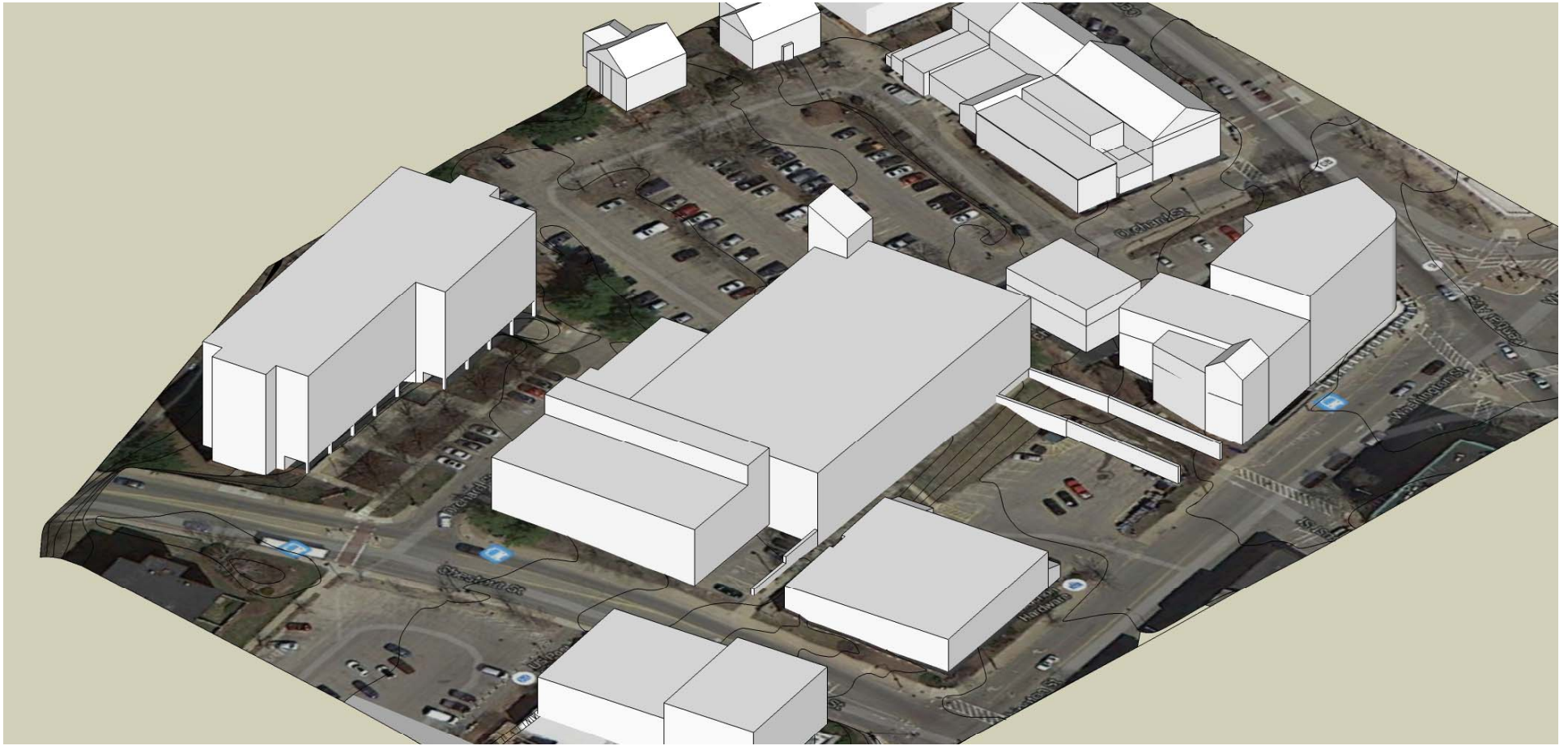
## CONCERNS WE HAVE HEARD SO FAR...

- ADDITIONAL NOISE
- IMPACT ON EXISTING ORCHARD ST PARKING
- UNDERSTAND PARKING NEEDS INTO THE FUTURE
- CONSTRUCTION SCHEDULE IMPACT ON LOCAL BUSINESSES
- PARKING DISPLACEMENT AND POTENTIAL SHUTTLE SERVICE
- COMMUNICATION TO PUBLIC AND POTENTIAL DEVELOPERS
- SAFE PEDESTRIAN CIRCULATION THROUGH SITE
- MAXIMIZE GREENERY AND LANDSCAPE
- AIR QUALITY IMPACT FROM PARKING GARAGE
- ENERGY EFFICIENT / GREEN SOLUTIONS: SOLAR

---

PUBLIC AND STAKEHOLDER INPUT

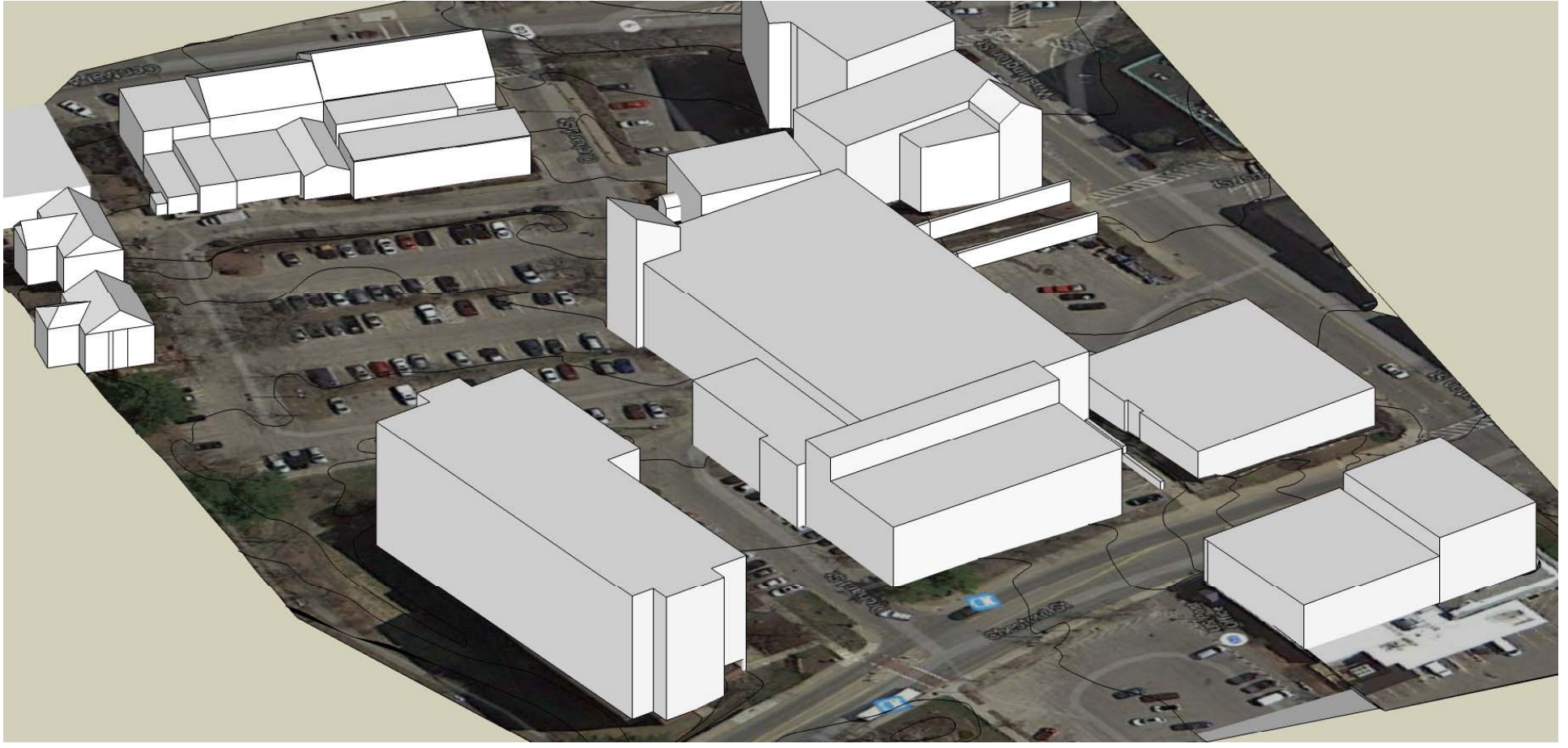
LAVALLEE|BRENSINGER ARCHITECTS | Architects Design Group



## MASSING STUDIES

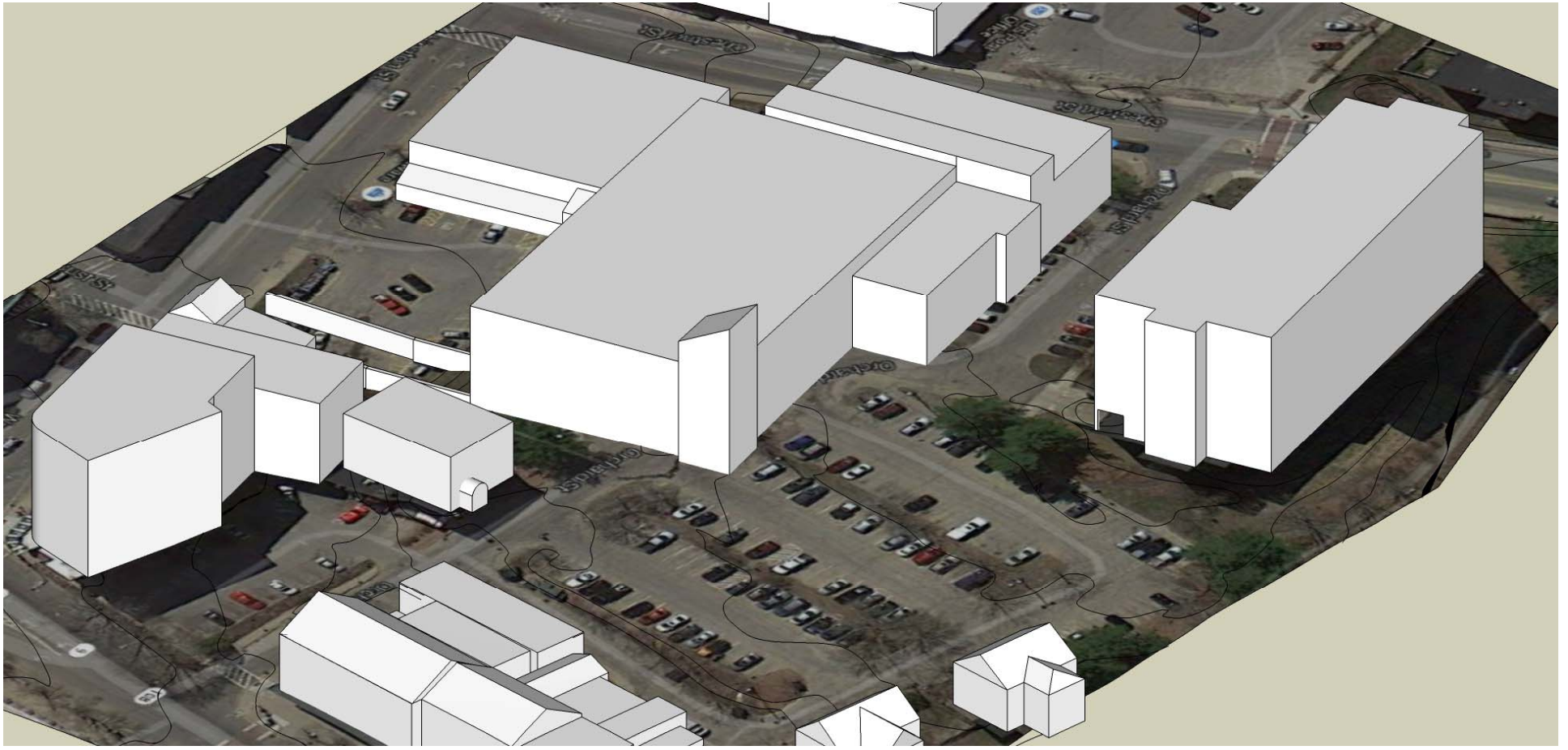
LAVALLEE | BRENSINGER ARCHITECTS | Architects Design Group





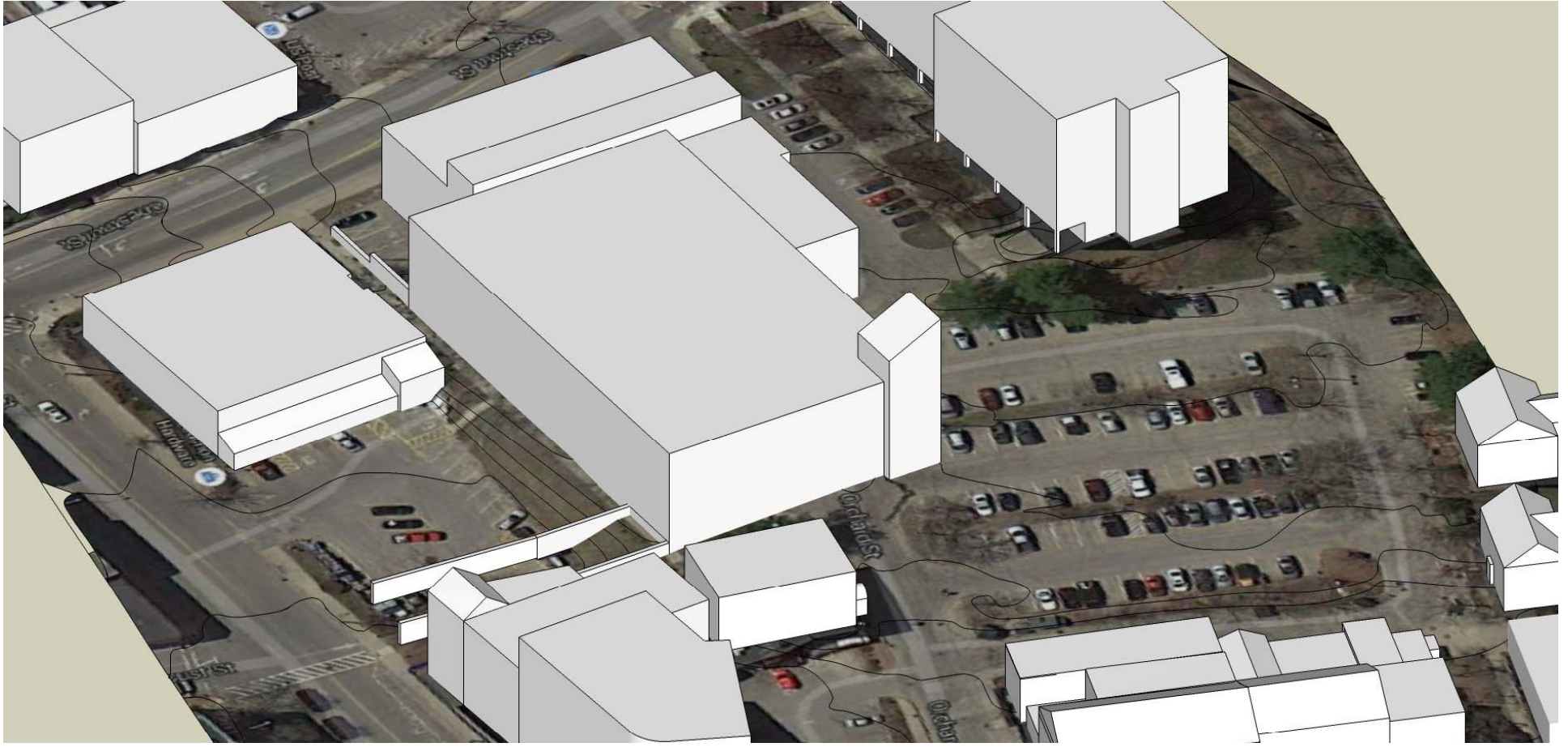
## MASSING STUDIES

LAVALLEE|BRENSINGER ARCHITECTS | Architects Design Group



## MASSING STUDIES

LAVALLEE|BRENSINGER ARCHITECTS | Architects Design Group



## MASSING STUDIES

LAVALLÉE|BRENSINGER ARCHITECTS | Architects Design Group

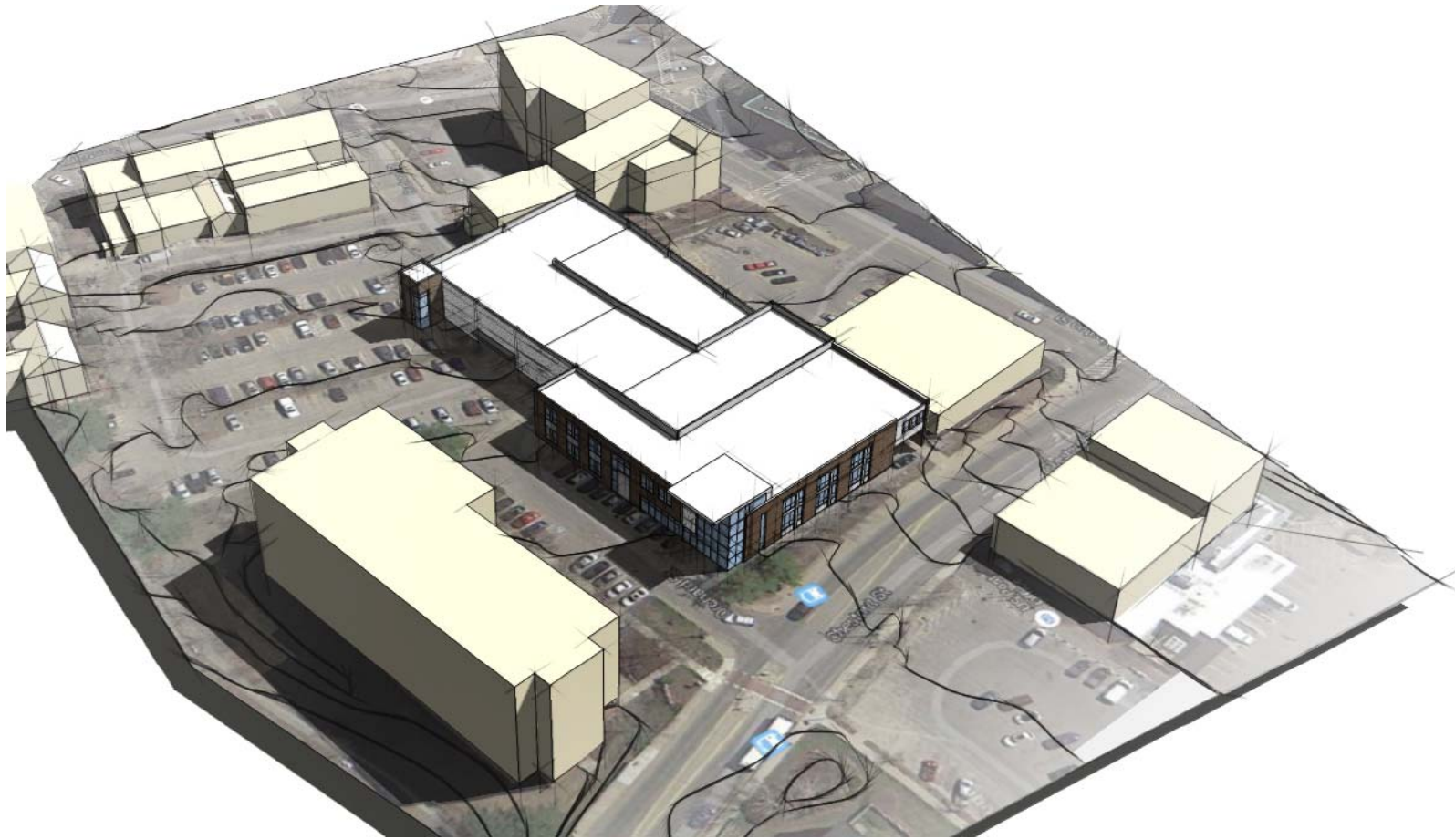
## ORCHARD STREET PARKING GARAGE STATISTICS

- FOOTPRINT: 120' x 206'
  - 5 LEVELS INCLUDING UNDERGROUND POLICE PARKING
  - 49 POLICE SPACES
  - 287 PUBLIC SPACES / 70 PER LEVEL
  - POLICE ACCESS FROM WASHINGTON STREET
  - PUBLIC ACCESS FROM ORCHARD STREET
  - DIRECT ACCESS TO POLICE DEPARTMENT
  - DIRECT ACCESS TO MYRTLE STREET
- 
- SURFACE PARKING REMAINS: LOSS OF ROUGHLY 20-25 SPACES

---

### PARKING GARAGE

LAVALLEE|BRENSINGER ARCHITECTS | Architects Design Group



---

## CONCEPT DESIGN

LAVALLEE|BRENSINGER ARCHITECTS | Architects Design Group



## CONCEPT DESIGN

LAVALLEE|BRENSINGER ARCHITECTS | Architects Design Group





## CONCEPT DESIGN

LAVALLEE|BRENSINGER ARCHITECTS | Architects Design Group





## CONCEPT DESIGN

LAVALLÉE|BRENSINGER ARCHITECTS | Architects Design Group



## CONCEPT DESIGN

LAVALLEE|BRENSINGER ARCHITECTS | Architects Design Group