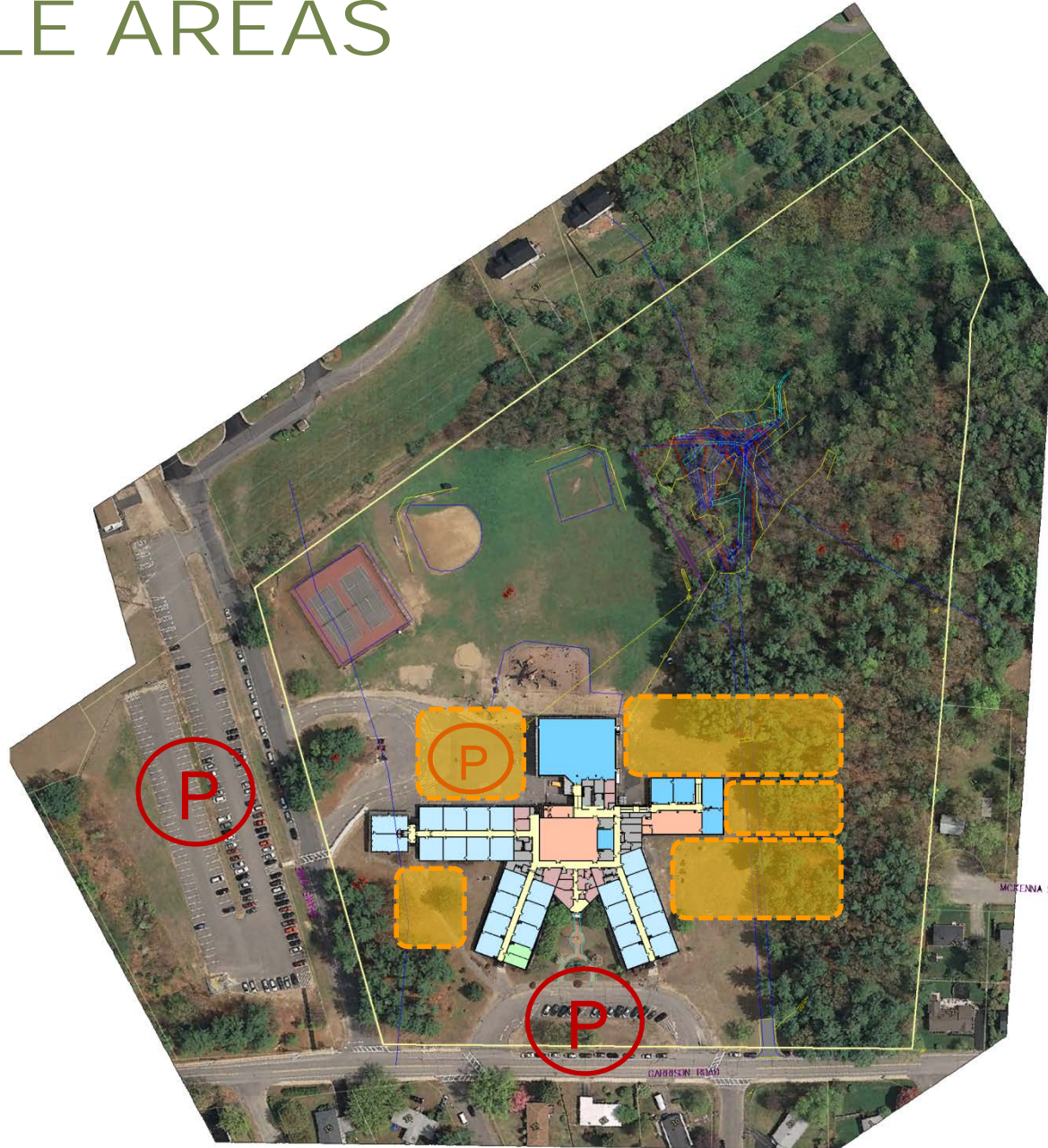


*Garrison Elementary School Facilities Study for
Dover School District, SAU 11*

SITE OVERVIEW



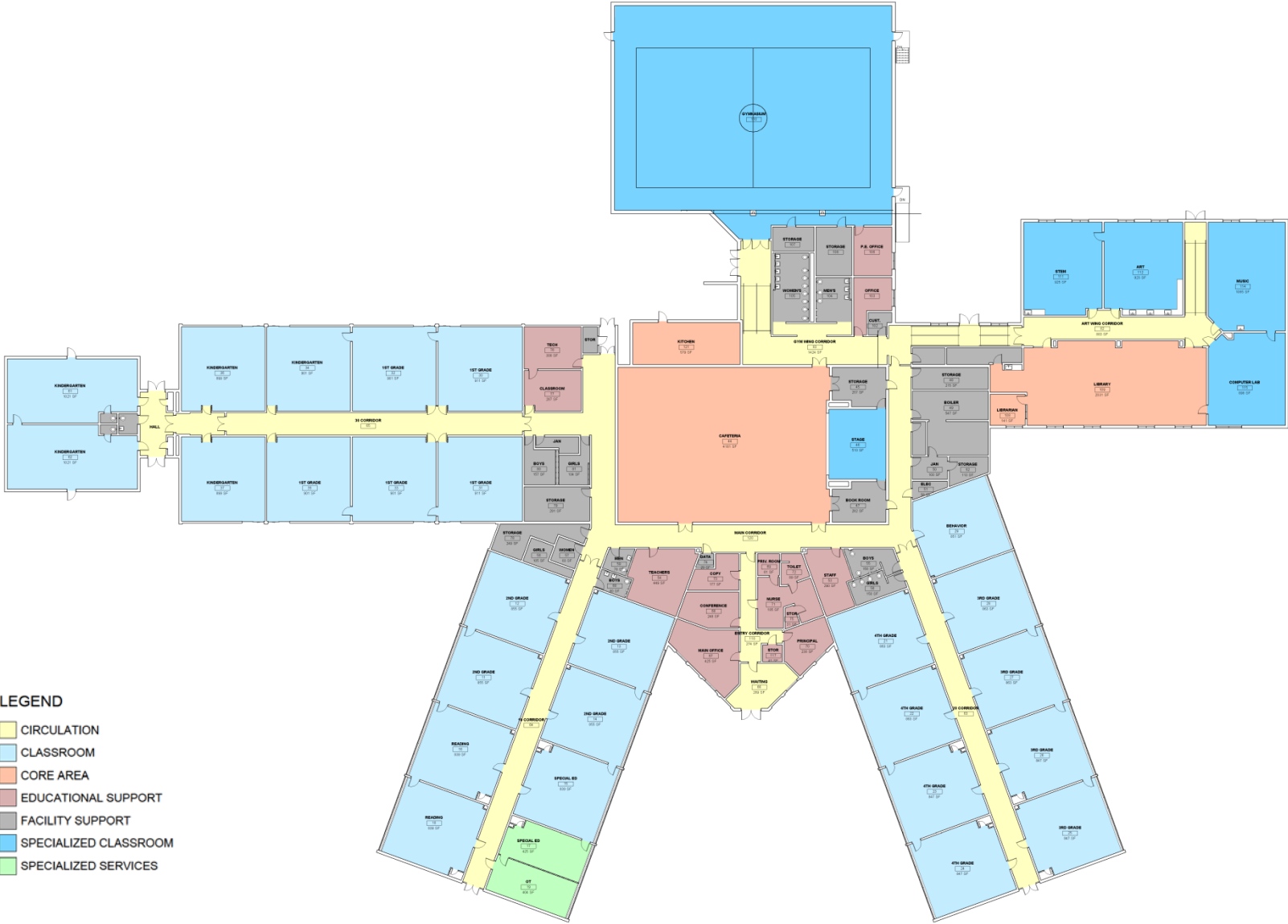
BUILDABLE AREAS



SITE OVERVIEW

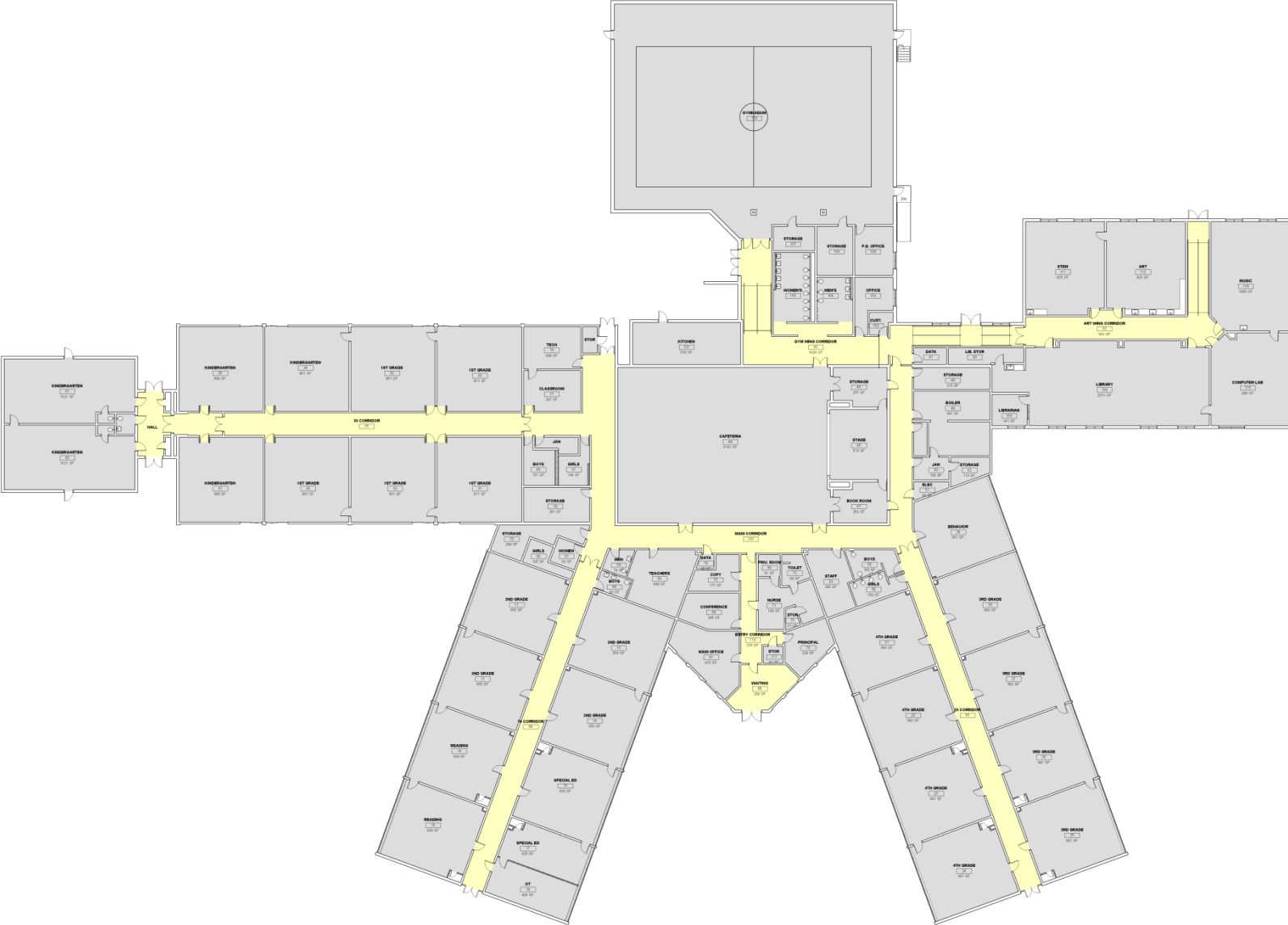


PLAN OVERVIEW



- LEGEND**
- CIRCULATION
 - CLASSROOM
 - CORE AREA
 - EDUCATIONAL SUPPORT
 - FACILITY SUPPORT
 - SPECIALIZED CLASSROOM
 - SPECIALIZED SERVICES

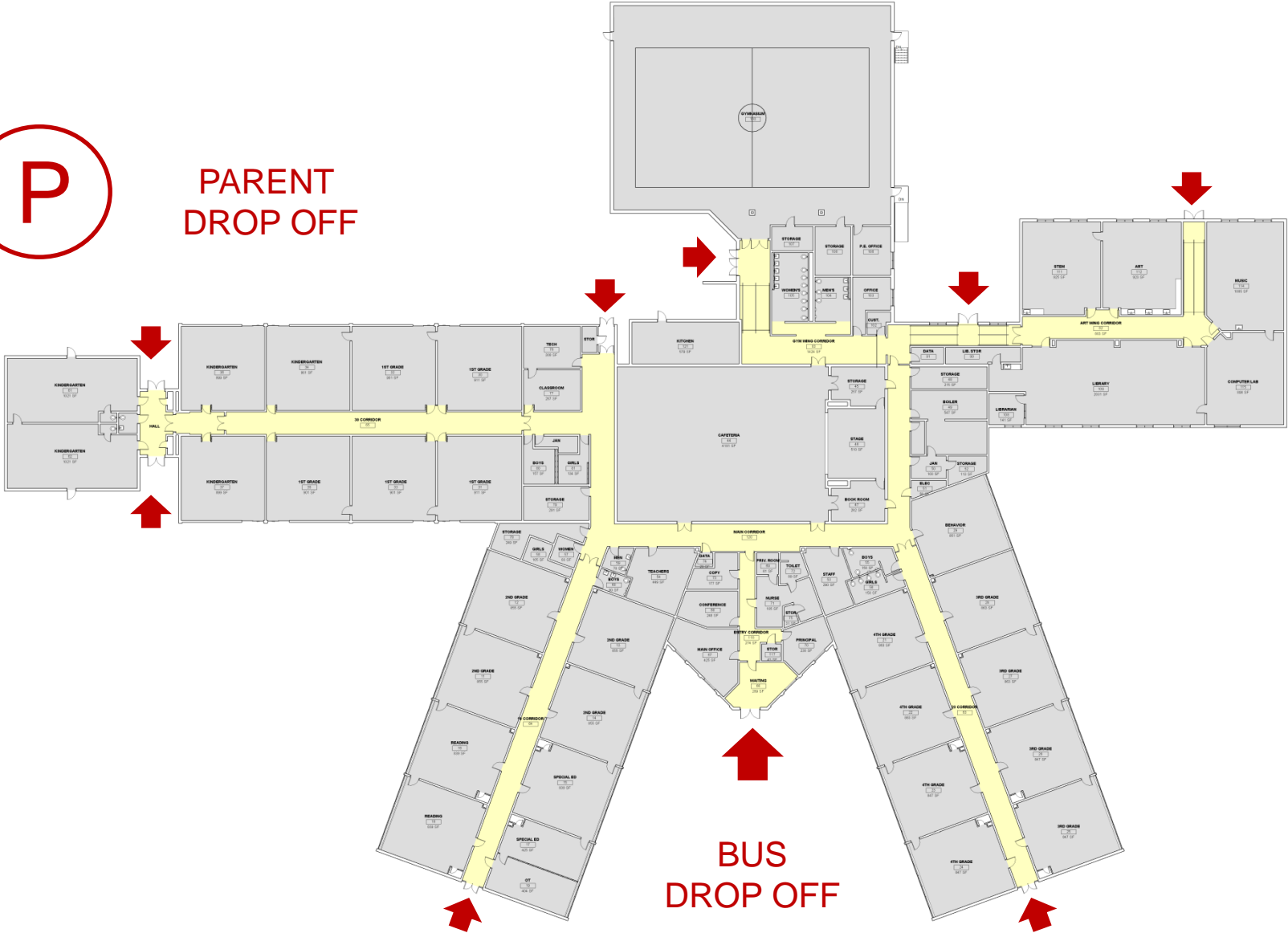
CIRCULATION OVERVIEW



ENTRANCE ANALYSIS

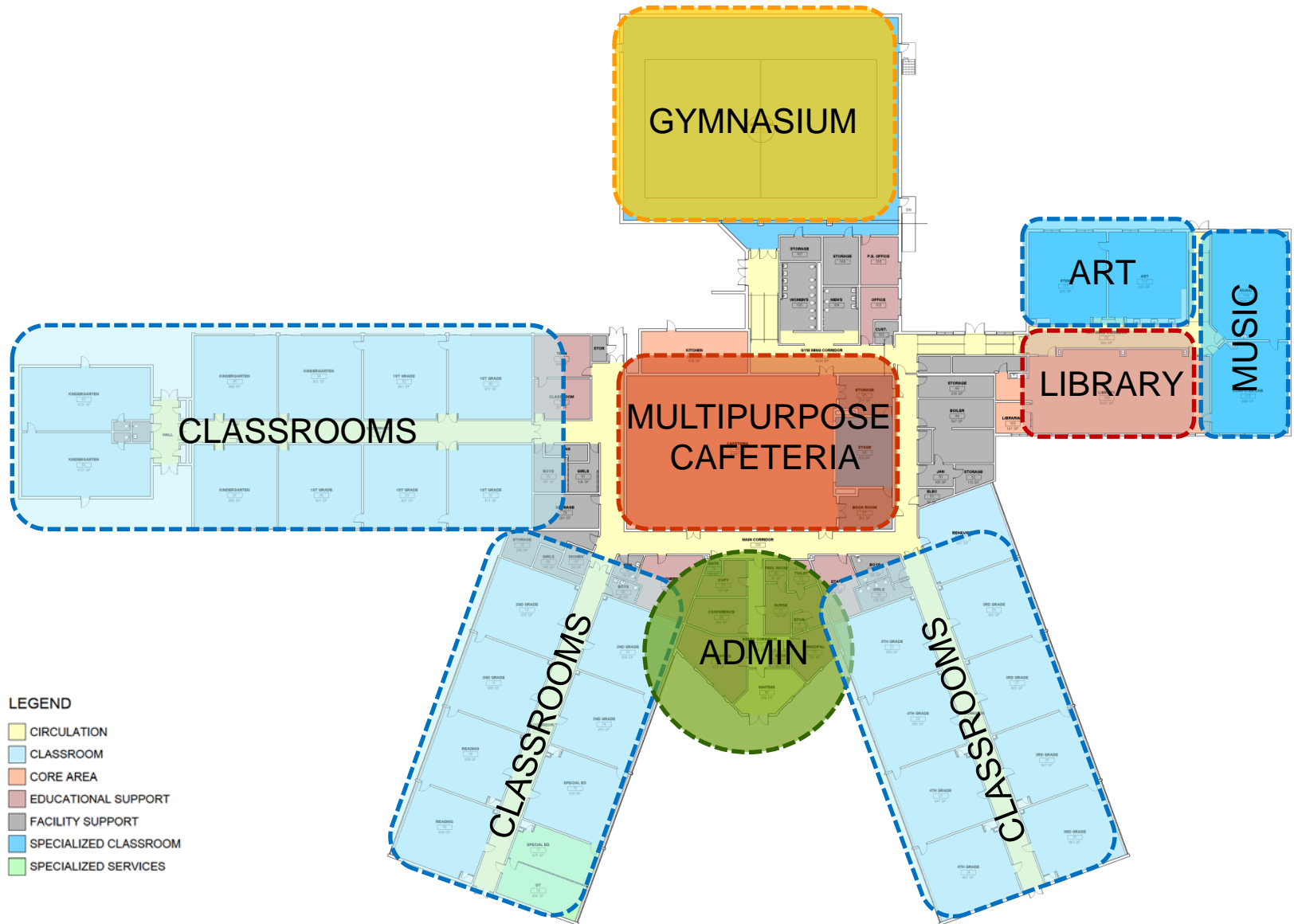


PARENT
DROP OFF

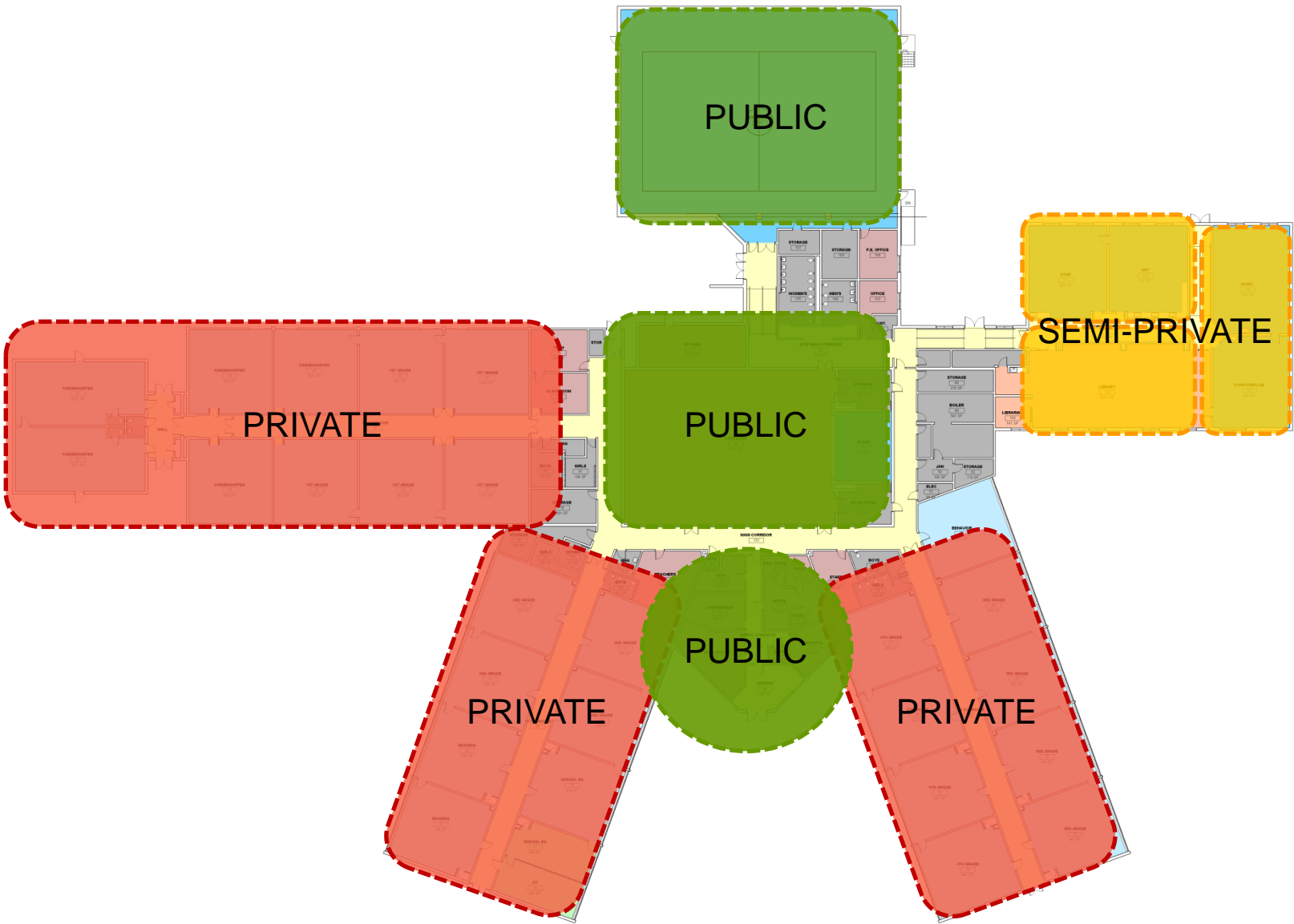


BUS
DROP OFF

PROGRAM ORGANIZATION



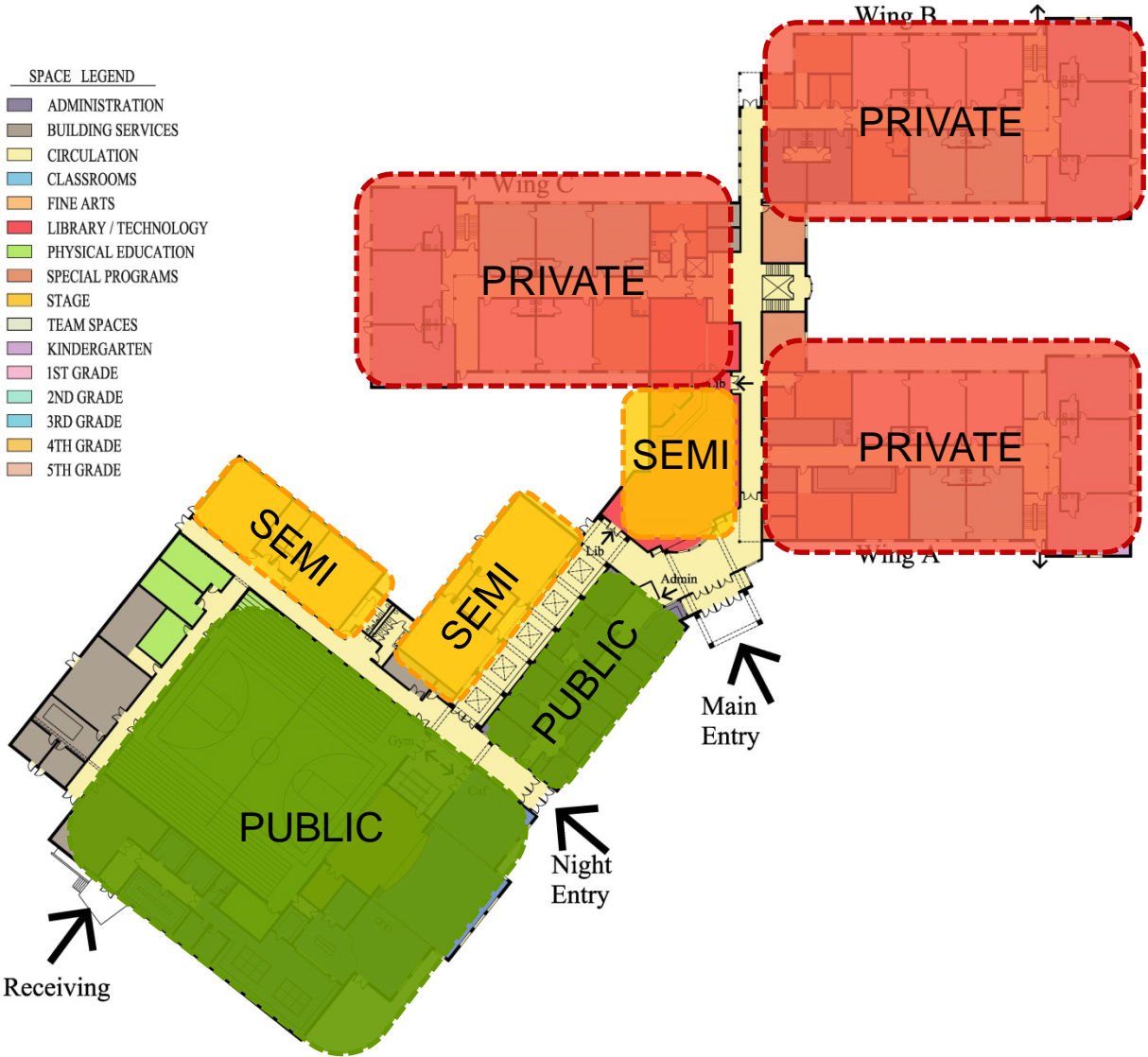
PUBLIC/PRIVATE SPACES



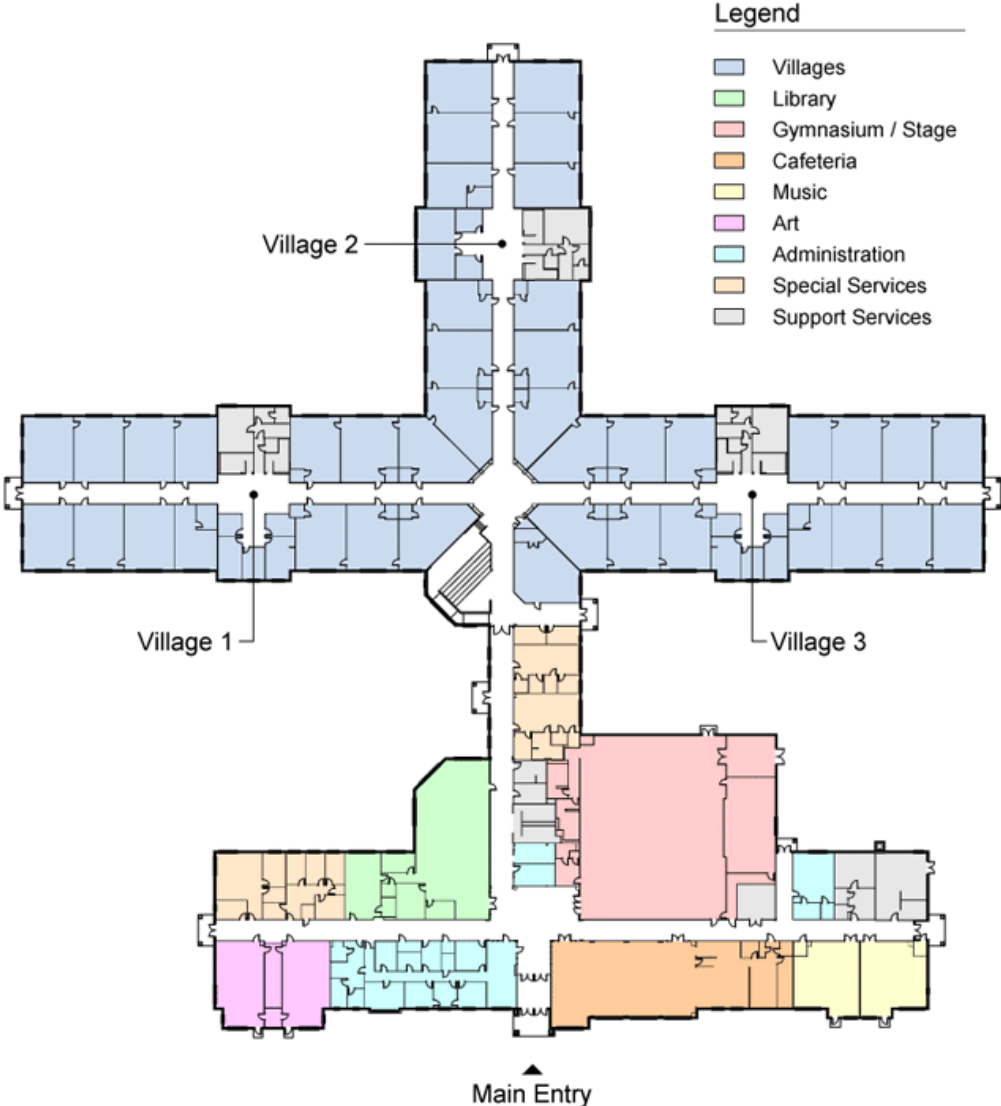
PROGRAM ORGANIZATION



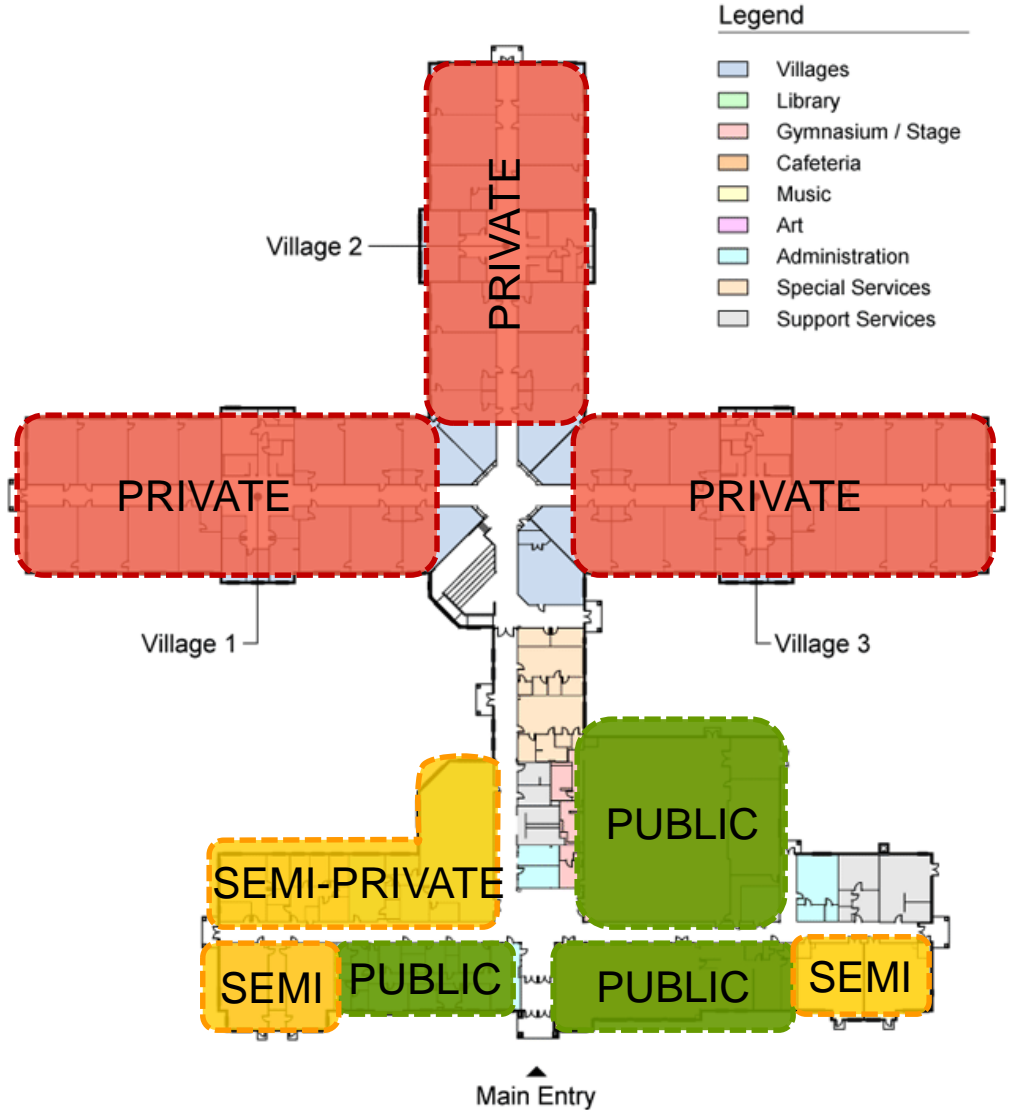
PUBLIC/PRIVATE SPACES



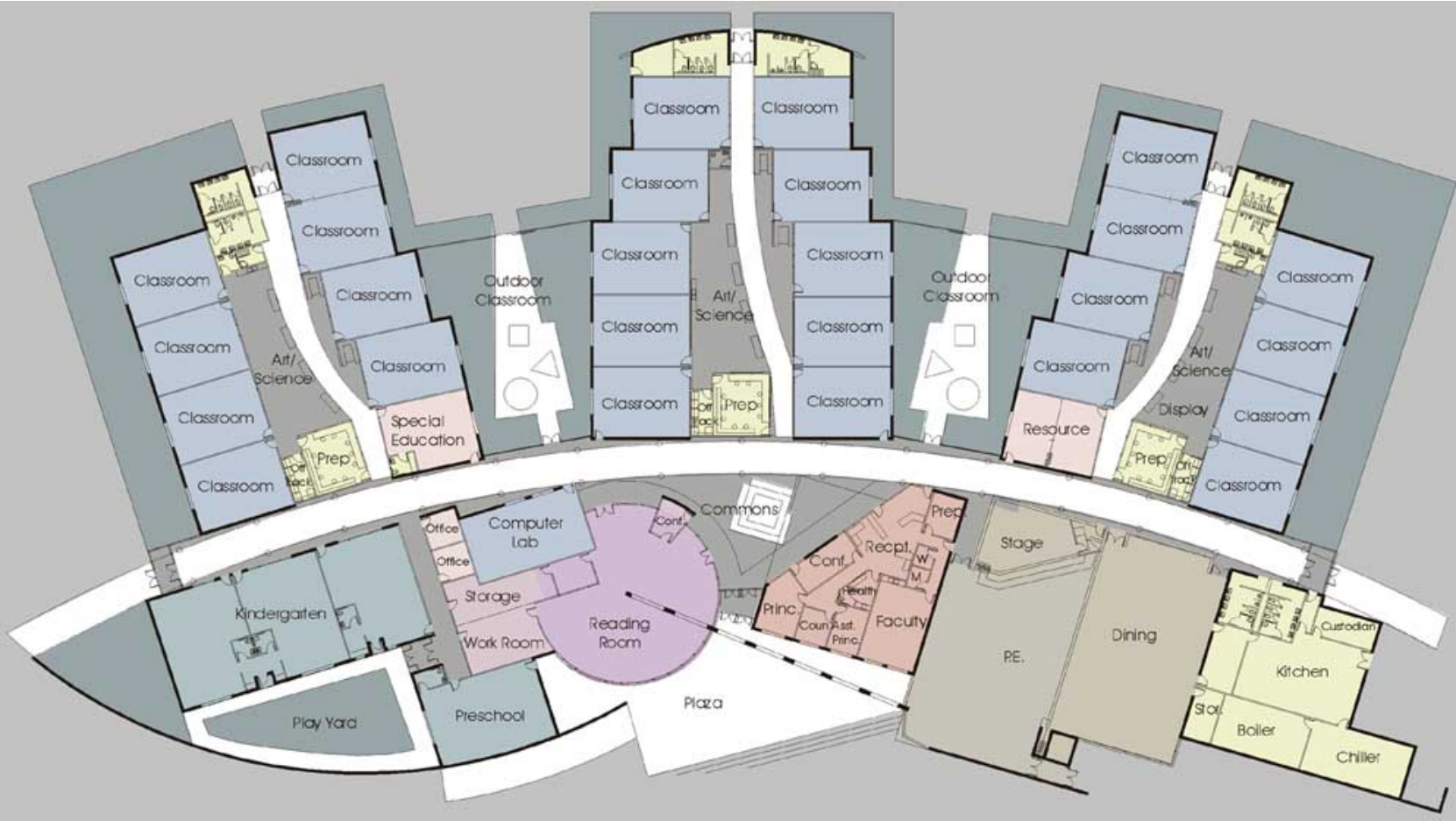
PROGRAM ORGANIZATION



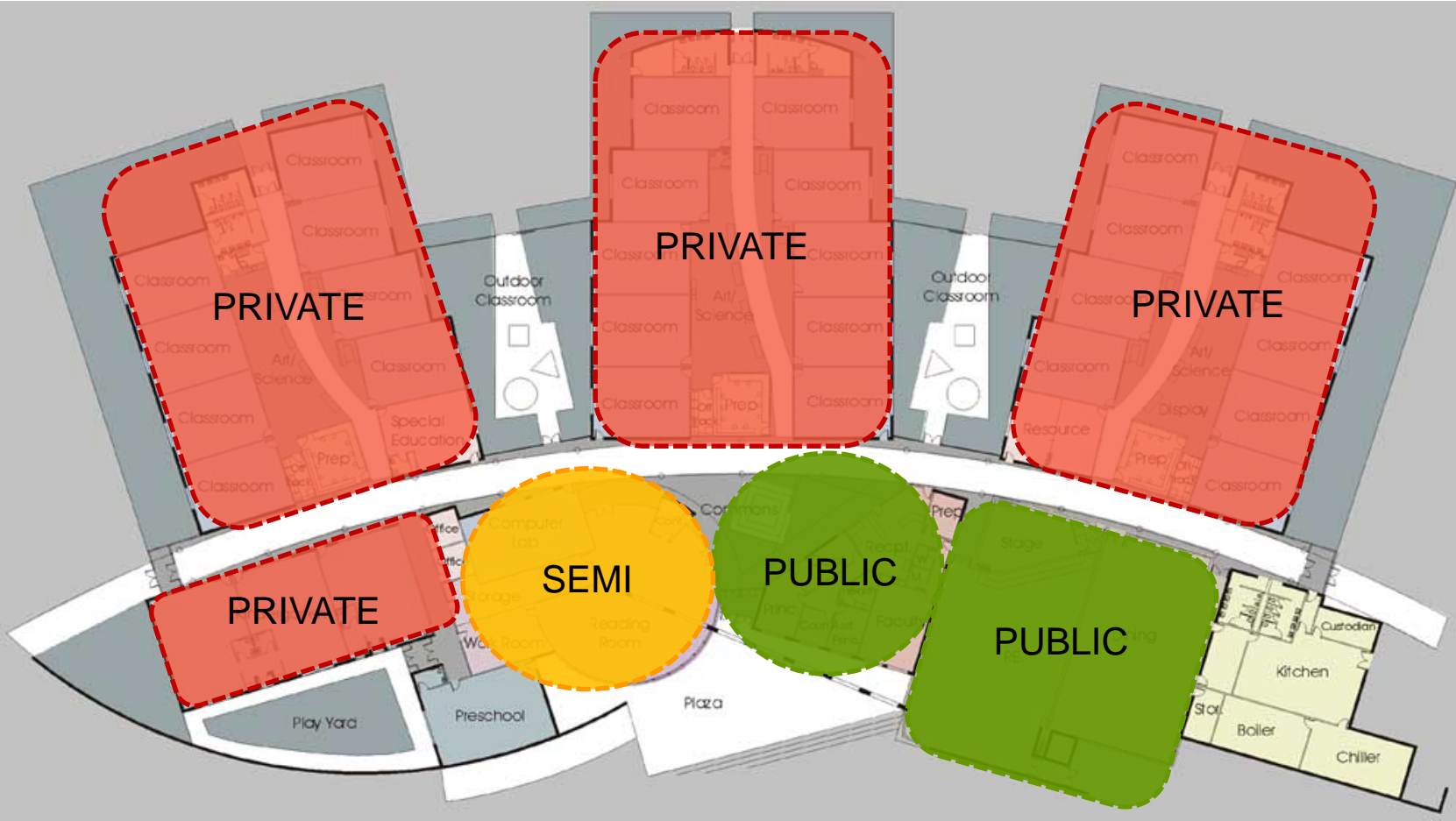
PUBLIC/PRIVATE SPACES



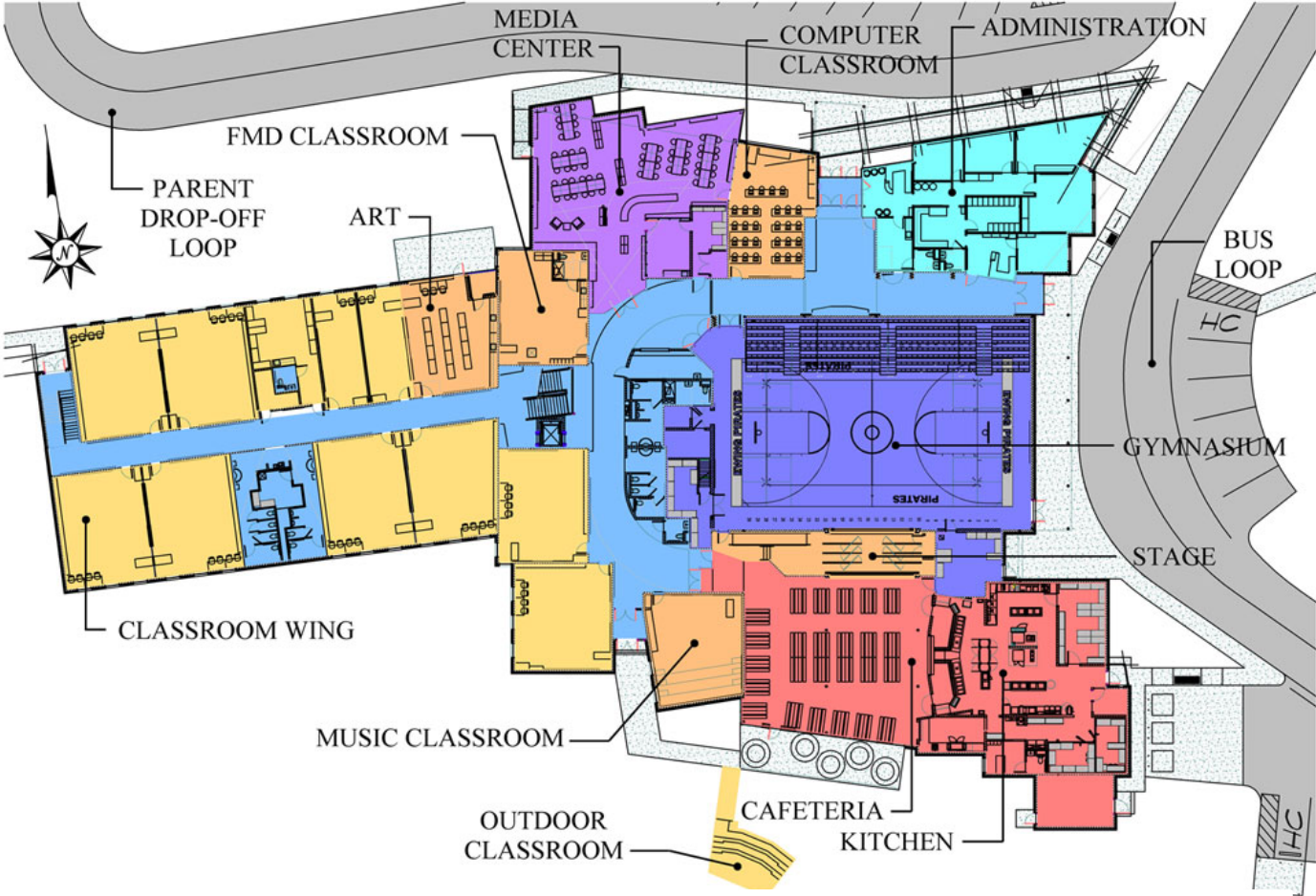
PROGRAM ORGANIZATION



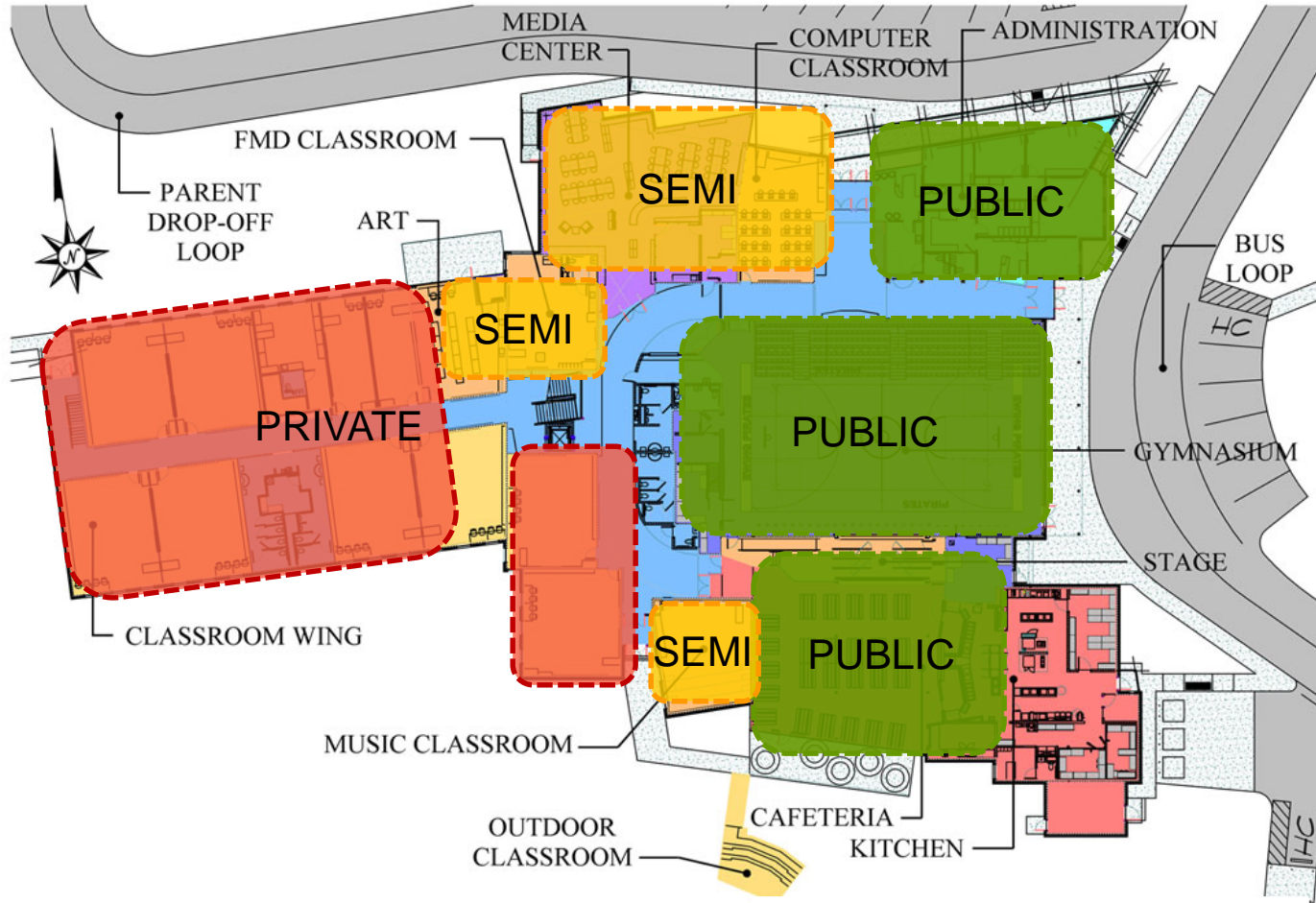
PUBLIC/PRIVATE SPACES



PROGRAM ORGANIZATION



PUBLIC/PRIVATE SPACES

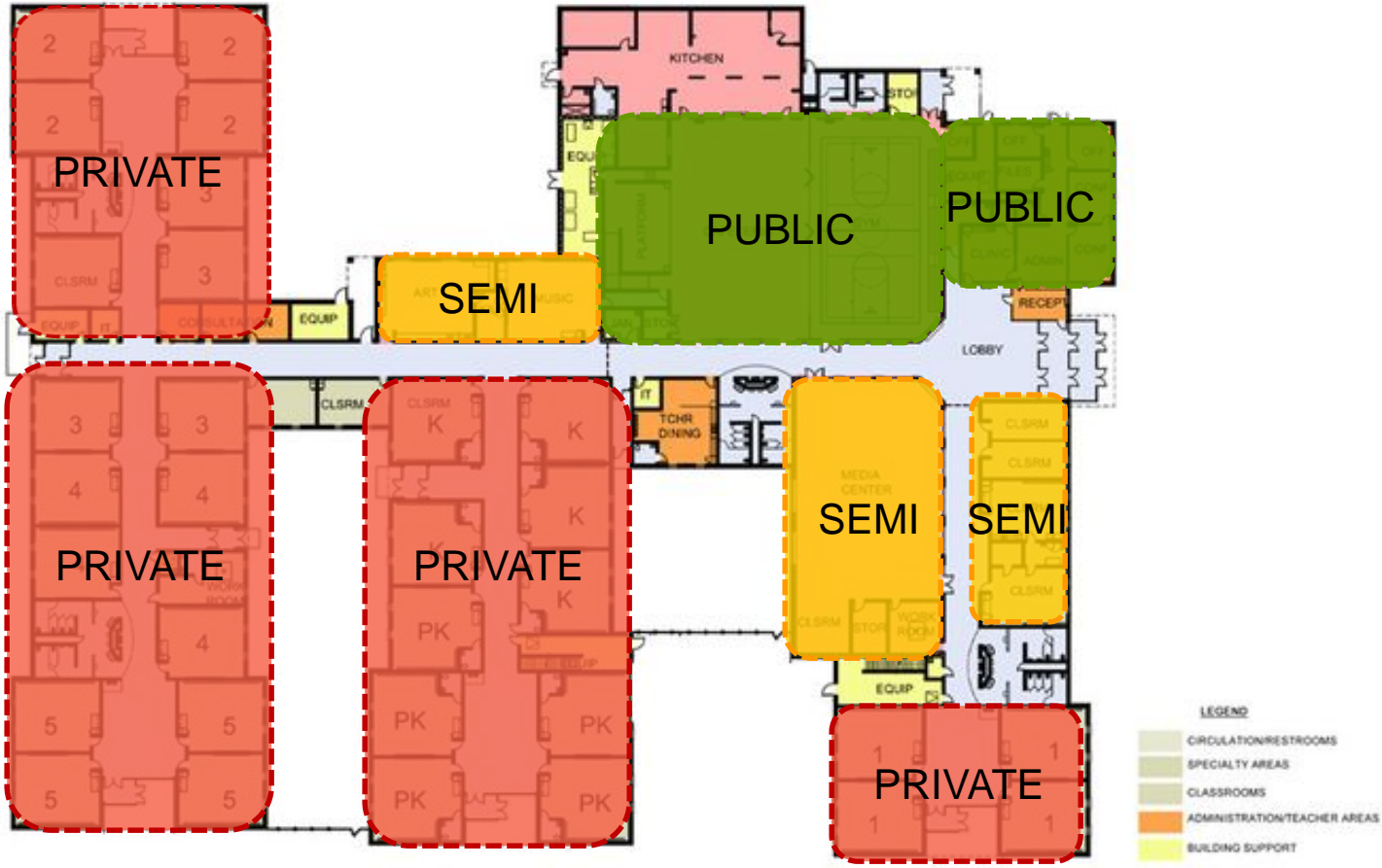


PROGRAM ORGANIZATION



ARBOR GROVE SCHEMATIC PLAN ↑

PUBLIC/PRIVATE SPACES



ARBOR GROVE SCHEMATIC PLAN ↑

CALCULATED CAPACITY

GENERAL CLASSROOMS				
CLASSROOM	NUMBER OF CLASSROOMS	EXISTING S.F. AREA	D.O.E.	CALCULATED CAPACITY
K	5	(3) 900 (2) 1,000	1,000	94
1	5	(5) 900	900	125
2	4	(4) 850	900	92
3	4	(4) 850	900	92
4	4	(4) 850	900	92
			TOTAL	495

CALCULATED CAPACITY

SPECIALIZED CLASSROOMS	
CLASSROOM	EXISTING S.F. AREA
STEM	925
ART	923
MUSIC	1065
COMPUTER LAB	898
STAGE	510
GYMNASIUM	7693

SPECIAL SERVICES CLASSROOMS	
CLASSROOM	EXISTING S.F. AREA
SPECIAL ED RM 15	839
READING RM 16	839
SPECIAL ED RM 17	425
READING RM 18	839
OT/PT RM 19	404

CALCULATED CAPACITY

CORE AREAS	
CORE ROOM	EXISTING S.F. AREA
LIBRARIAN	141
LIBRARY	2031
CAFETERIA	4181
KITCHEN	579

SPECIAL SERVICES	
CLASSROOM	EXISTING S.F. AREA
SPECIAL ED RM 15	839
READING RM 16	839
SPECIAL ED RM 17	425
READING RM 18	839
OT/PT RM 19	404

CALCULATED CAPACITY

CORRIDORS	
CORRIDOR	EXISTING S.F. AREA
20 CORRIDOR	1029
10 CORRIDOR	986
30 CORRIDOR	900
ART WING	883
GYM WING	1424
ENTRY	274
MAIN	2290

EDUCATIONAL SUPPORT AREAS	
ROOM	EXISTING S.F. AREA
STAFF	290
TEACHERS	449
WAITING	289
MAIN OFFICE	425
CONFERENCE	248
PRIV. ROOM	61
PRINCIPAL	238
NURSE	306
STOR	43
ENTRY CORRIDOR	274

