



CONSTRUCTION



Dover High School and Career Technical Center

Monthly Construction Report No. 2



November 3, 2016

TABLE OF CONTENTS

- A. Executive Summary
 - 1. Construction Documents Area Breakout Plan
 - 2. Construction Progress Highlights
 - 3. Critical Issues
 - 4. Summary

- B. Construction Status
 - 1. Schedule Building Phase Plan
 - 2. Monthly Construction Schedule Update
 - 3. 3-Week Look Ahead Schedule
 - 4. Schedule Impacts
 - 5. Progress Photos

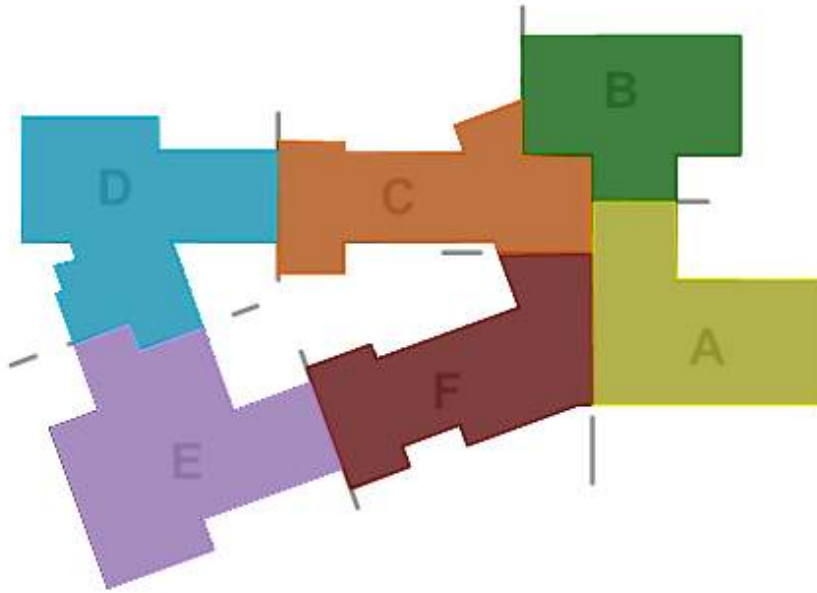
- C. Design Coordination
 - 1. RFI's
 - 2. Submittals
 - 3. Architectural Supplemental Instructions

- D. Safety
 - 1. Safety Status

- E. Project Financial Status
 - 1. Procurement Update
 - 2. Current Contract Summary
 - 3. Change Order Management
 - 4. Contingency Usage
 - 5. Allowance Usage
 - 6. Billed to Date

A. Executive Summary:

1. Construction Documents Area Breakout Plan



- ▶ Area A
 - Ground - Auditorium, Band, Food Service
 - First - Culinary Kitchen/Dining
 - Second - CTC Labs/Classrooms, Staff Dining
- ▶ Area B
 - Ground - Gymnasium, Alt PE, Locker Rooms
 - First - CTC Salon, Labs
 - Second - Life Sciences
- ▶ Area C
 - Ground - MEP, Weight Room, Team rooms, Marketing
 - First - Library, SPED, NJROTC, Offices, Guidance
 - Second - Business CR's, SPED CR's, Typical CR's
- ▶ Area D
 - Ground - N/A
 - First - Building Construction, Electrical, Wood Working, Typical CR's, Art
 - Second - Typical CR's, Sciences & Labs
- ▶ Area E
 - Ground - N/A
 - First - Typical CR's, Photography, Earth Science, Welding, Auto, CTE Offices/Admin
 - Second - Typical CR's, Sciences & Labs
- ▶ Area F
 - Ground - Town Square
 - First - SPED CR's, Pre-Engineering, Photo, Typical CR's, Admin, Nurse, Main Entry
 - Second - Computer, Typical CR's

2. Construction Progress Highlights

- Site utilities well underway with storm, sewer, water and site electrical ongoing.
- Excavation and prep for foundation is ongoing in areas A and B.
- Rammed Aggregate Piers for Areas A and F were completed on 10/21/16.
- Foundations are ongoing with footings and walls for Area B complete and Area A 75% complete.
- Drilling and blasting of ledge finished on 10/21/16. Additional removal may be required as work commences.

3. Critical Issues

- Approval of GMP and release of subcontractors.

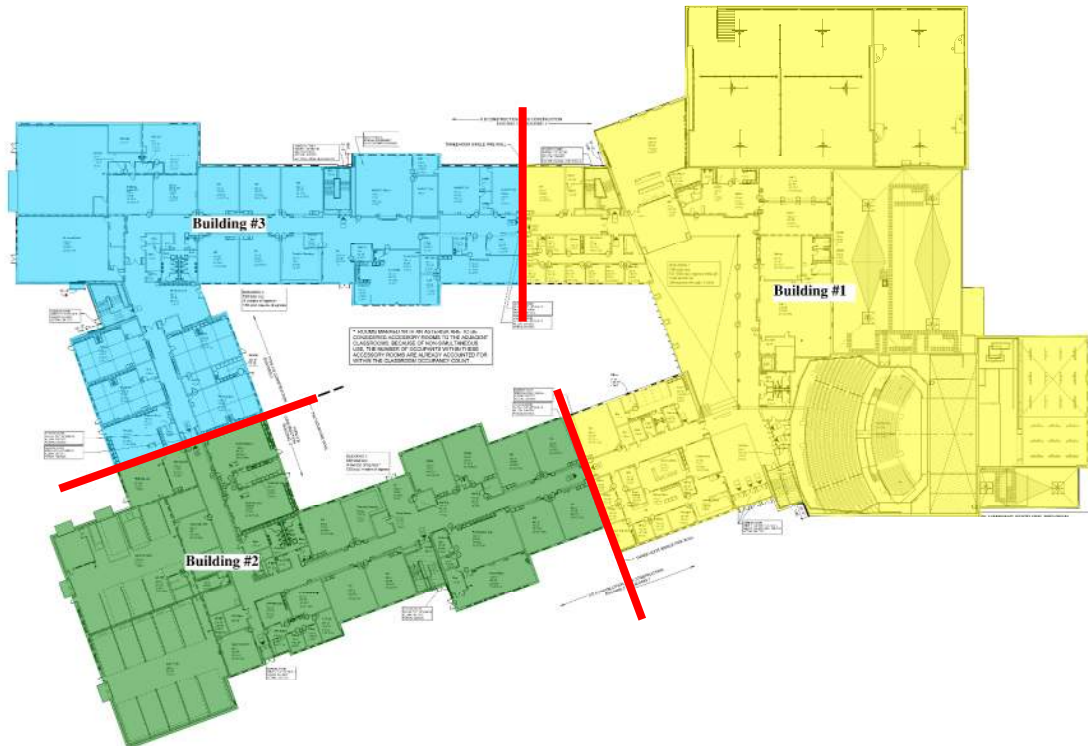
4. Summary

- The project is currently on schedule and proceeding smoothly. Safety has been good to date. Bids have been received and analyzed to determine budget status. We are maintaining excellent communication with all parties.

B. Construction Status:

1. Schedule Phase Plan

- For scheduling purposes, the building is separated into three areas – Building 1, Building 2 and Building 3. These are defined as separate areas separated by a fire rated expansion joint.



2. Monthly Schedule Update - Attached

3. Three-Week Look Ahead Schedule – Distributed weekly

Dover HS & CTC - Monthly Report for October, 2016

4. Schedule Impacts

- We have encountered a substantial amount of ledge and are reviewing the potential impact to the schedule.

5. Progress Photos

- Ductbank Installation at Animal Science Building



- Radius Auditorium Footing and Rebar



Dover HS & CTC - Monthly Report for October, 2016

- Auditorium Wall Placement



- Loading Dock Retaining Wall



- Area C Excavation and Ledge Removal



C. Design Coordination:

1. RFI Status
 - Submitted (117)
 - Open (06)
 - Critical (00)
2. Submittals
 - Submitted (87)
 - Open (05)
 - Critical (00)
3. ASI's
 - Issued (10)

D. Safety Update:

1. PC has a site specific safety program in place for this project. Every worker who comes on site is required to be oriented to the project rules and expectations. Safety has been good to date. A PC safety specialist is now on site full time. He will perform safety audits, orient all workers and manage our site specific safety program.

PC's on-site safety specialist does a weekly audit and provide the team with a safety score from 0 to 100. Below are the most recent scores.

Week of 10/3/16 = 88

Week of 10/10/16 = 85

Week of 10/17/16 = 84

Dover HS & CTC - Monthly Report for October, 2016

Week of 10/24/16 = 94

Week of 10/31/16 = 97

E. Project Financial Status:

1. Procurement Update: Letters of Recommendation (LOR's) Issued and Signed

- 03.01A Concrete Foundations \$ 1,800,000
- 03.01B Concrete Flatwork \$ 2,019,559
- 05.01 Structural Steel \$ 6,400,000
- 14.01 Elevators \$ 211,131
- 31.01 Sitework \$ 4,546,082
- 31.02 Rammed Aggregate Piers \$ 285,917
- o Total to Date \$15,262,689
- GMP procurement is underway

2. Current Contract Summary (Early GMP)

- Base Contract: \$ 4,270,636
- Approved Changes to Date (4) \$ 182,958
- Current Contract amount: \$ 4,453,594

3. Change Order Management: Will be tracked from approved final GMP

4. Contingency Usage

- Carried: \$ 119,550
- Committed to Date: \$ 0
- Remaining: \$ 119,550

5. Allowance Usage

	<u>Amount</u>	<u>Used</u>	<u>Remaining</u>
• None to date	\$ 0	\$ 0	\$ 0

6. Application for Payment Status

- Requisitioned to Date Thru #5 \$2,987,636
- Current Retained Amount \$ 118,219
- Remaining to be Billed \$1,465,958