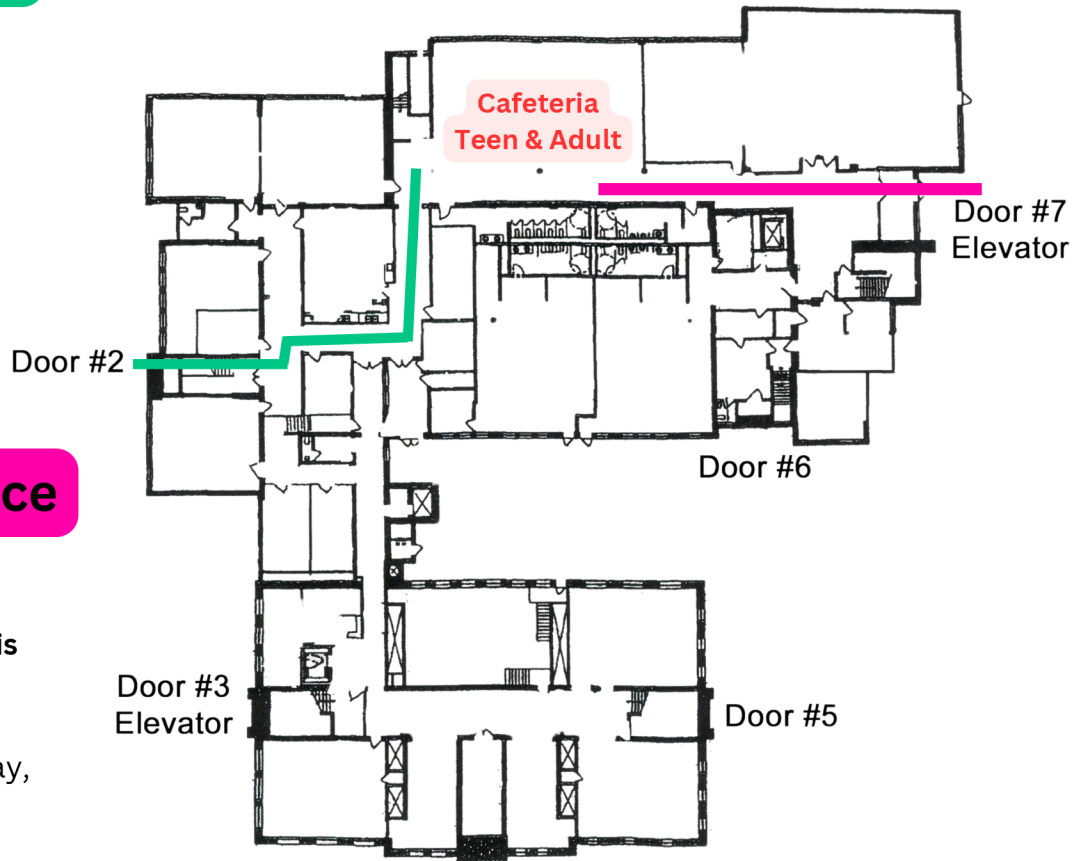


## Adult/Teen Area Directions

1. Enter Door #2.
2. Go down the stairs.
3. Turn left and proceed past the artwork wall.
4. At the Teen Center sign, turn left and continue to the Cafeteria.

## McConnell Center First Floor



## Handicap Entrance Directions

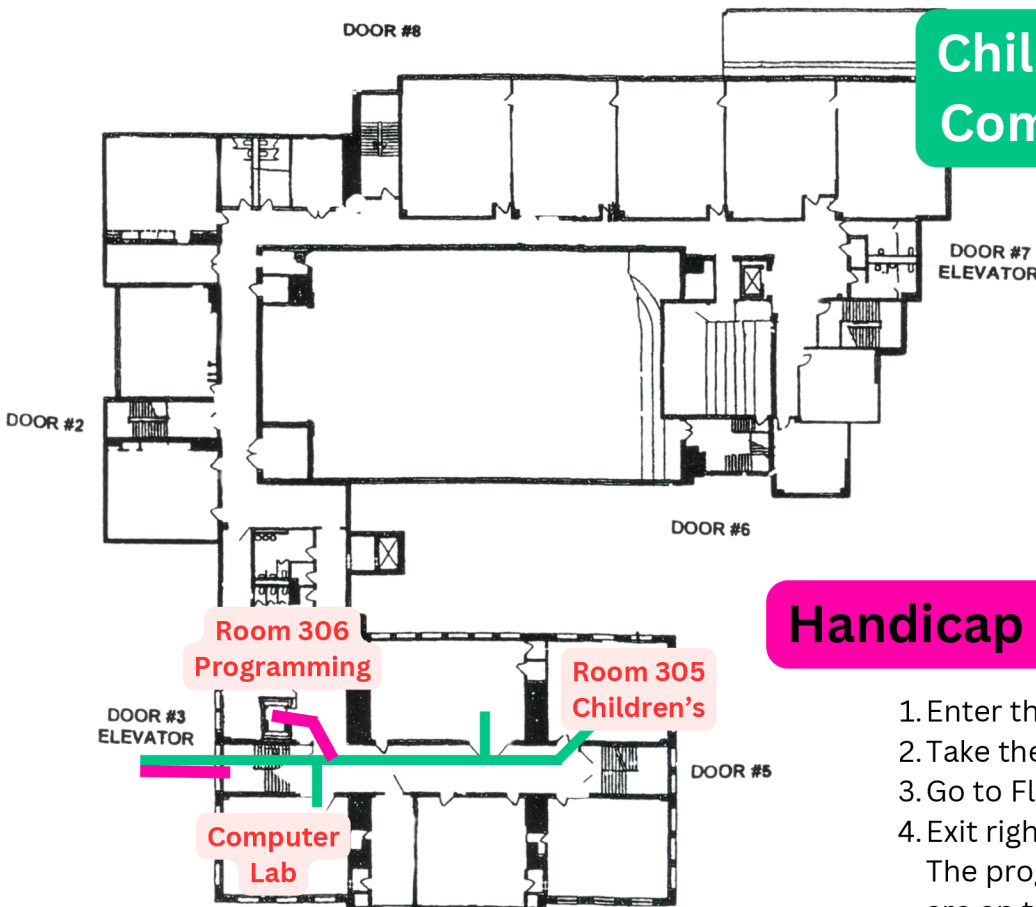
Limited handicap parking is located outside Door #7.

1. Enter through Door #7.
2. Go straight down the hallway, past the daycare, to the Cafeteria.

## McConnell Center Third Floor

### Children's/Programming/Computer Lab Directions

1. Enter through Door #3.
2. Go up two flights of stairs to the third floor.
3. The Computer Lab is immediately on your right in the hallway.
4. Continue straight to find the programming and Children's rooms on the left.

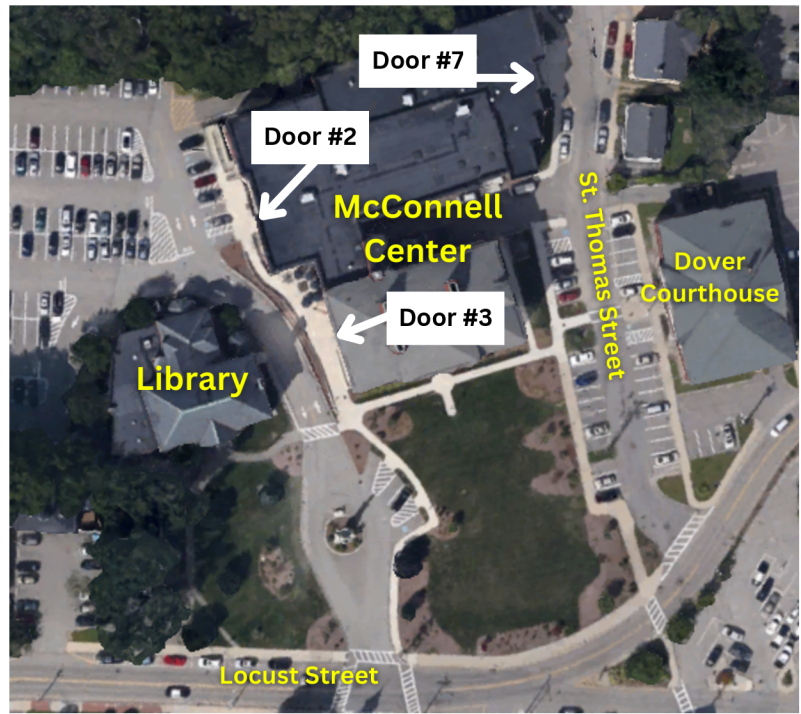


### Handicap Entrance Directions

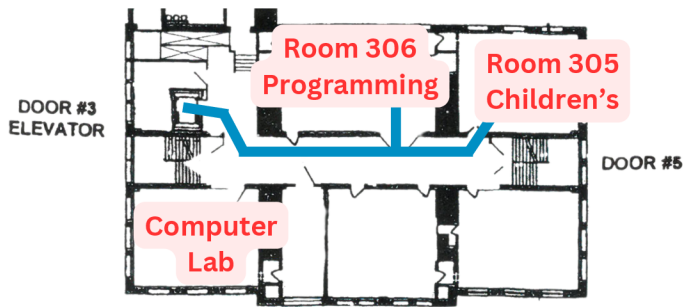
1. Enter through Door #3.
2. Take the elevator on the left.
3. Go to Floor 3.
4. Exit right; the computer lab is ahead. The programming and children's rooms are on the left down the hallway.

# Where Doors are Located

- #2: In front of handicap spaces, beside ramp to patio.
- #3: On patio.
- #7: On St. Thomas Street, past courthouse, opposite house #33-35.



## McConnell Center Third Floor

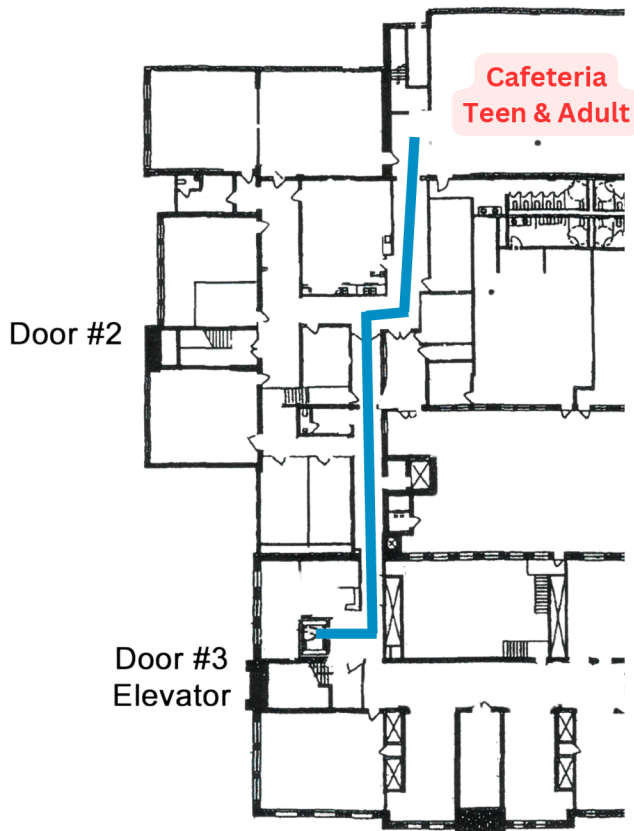


## Going from Children's to Adult/Teen Section (Elevator Access)

**TIP:** Start in the Children's area if visiting both the Children's and Adult/Teen sections. You can ask staff to keep all requested items in one room.

1. From the third floor, head to the elevator on the right side of the entrance.
2. Take the elevator to Floor 1.
3. Exit to the left and inform the gym receptionist you're going to the library.
4. Walk straight down the hall, passing the locker room on your left, until you reach a set of doors.
5. Take a slight right and continue straight to the Cafeteria.

## McConnell Center First Floor



## Children's to Adult/Teen (Walking)

The simplest way to move between the Children's and Adult/Teen sections is to exit the building and use Door #2.